

RoHS Compliant

1212 SERIES ESATA 7P SMT TYPE

REV	DATE	DESCRIPTION	NAME
01	07.06.21	NEW RELEASE	Amcen

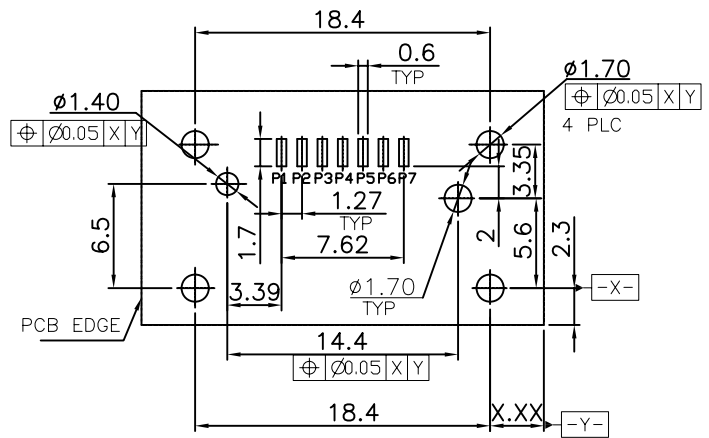
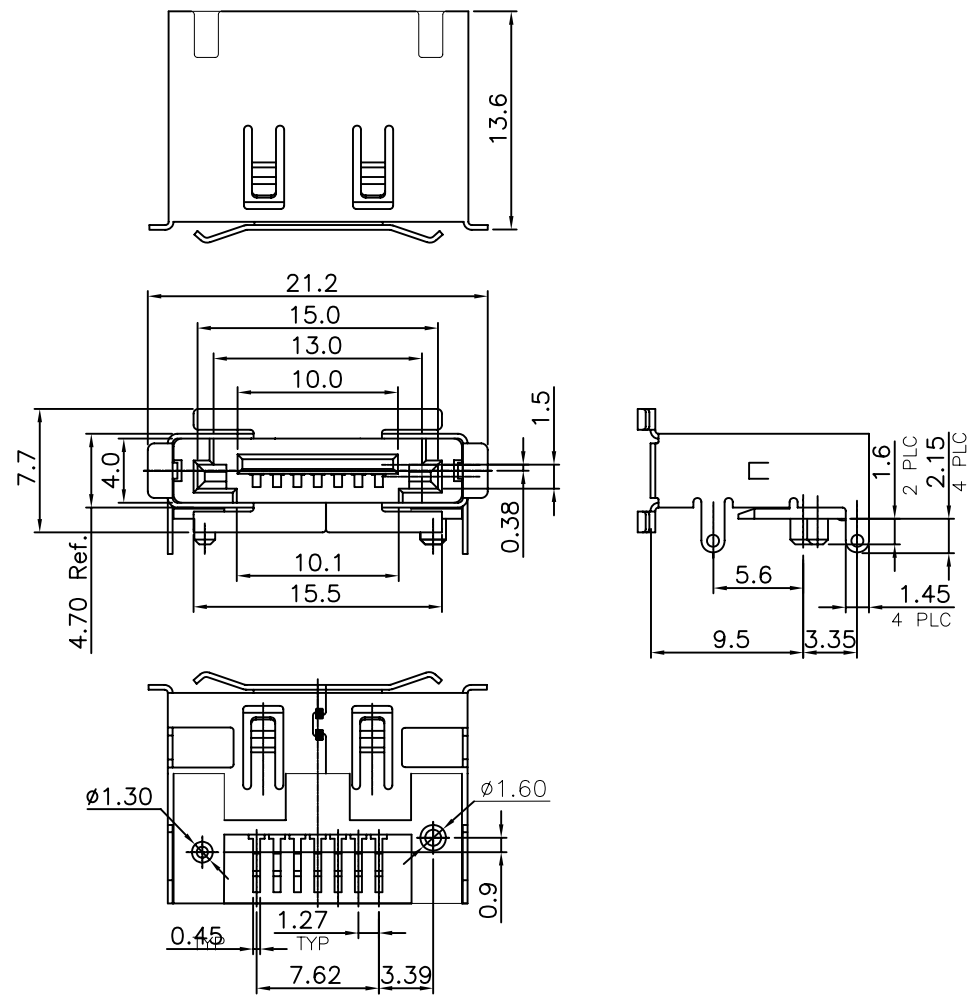
MATERIAL

HOUSING: SEE ORDERING INFORMATION (UL94V-0)  
 HOUSING COLOR: SEE ORDERING INFORMATION  
 TERMINAL: BRASS, T=0.25mm  
 TERMINAL PLATING: SELECTIVE Au IN CONTACT AREA, 100u" min. Sn IN SOLDER TAIL AREA. BOTH OVER 50u" min. Ni UNDER PLATED OVERALL  
 SHELL: BRASS, T=0.30mm  
 SHELL PLATING: SEE ORDERING INFORMATION  
 PACKING: TRAY

ORDERING INFORMATION

G1212-67 \*\* \*\* \*

00: LCP, BLACK      01: 1u" Au  
 02: 15u" Au  
 03: 30u" Au  
 00: SHELL Ni PLATED (SELECTIVE Au)



RECOMMEND P.C.BOARD MOUNTING DIMENSIONS t=1.60mm  
 PCB TOLERANCE:±0.05

GENERAL TOLERANCE ±0.25mm GENERAL ANGLE TOLERANCE ±3° 	WIESON TECHNOLOGIES CO., LTD		PART NO.: G1212-67*****	
	DRAWN BY	Amcen (WSC)	DRAWING NO.	G1212-67*****
	CHECKED BY	KEVIN	DRAWING SIZE	A4
	APPROVED BY	JERRY	UNIT	mm
	SORTING NO.	HY (WSC)	PAGE	1 OF 1

REFERENCE

[ARTICLE:044033 V4]