

RoHS Compliant

1212 SERIES 7+15P SATA CONN. SMT TYPE

REV	DATE	DESCRIPTION	ECN NO.	NAME
A	10.11.24	PROPOSAL		ZPEI
A1	13.01.30	△ MODIFY		LFW

MATERIAL:

HOUSING: LCP(UL94V-0)  
 HOUSING COLOR: BLACK  
 TERMINAL: PHOSPHOR BRONZE T=0.25mm  
 TERMINAL PLATING: SELECTIVE IN CONTACT AREA, 100u" min. Sn IN SOLDER TAIL AREA, BOTH OVER 50u" min. Ni UNDERPLATED OVERALL

BOARDLOCK: BRASS  
 BOARDLOCK PLATING: 100u"min. Sn OVER 50u" min. Ni UNDERPLATED OVERALL

PACKING: TUBE

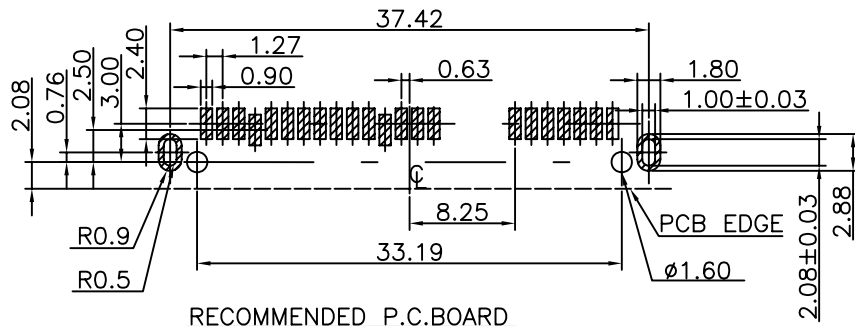
ORDER INFORMATION  
 G1212-82 \*\* \* \* \* -00

HOUSING MATERIAL&COLOR  
 00: LCP; BLACK

TERMINAL PLATING  
 1: GOLD FLASH  
 2: 15u" Au PLATED  
 3: 30u" Au PLATED

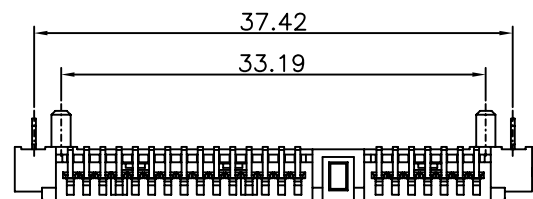
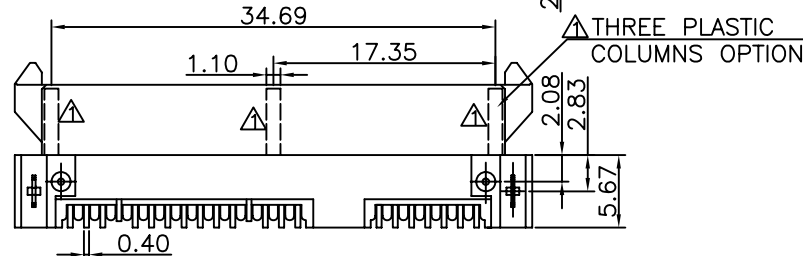
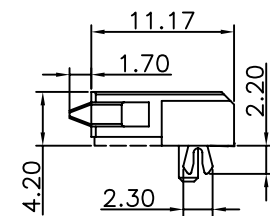
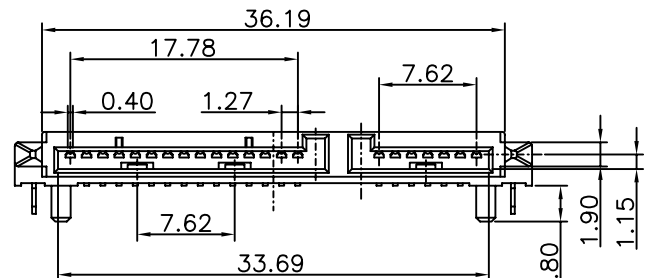
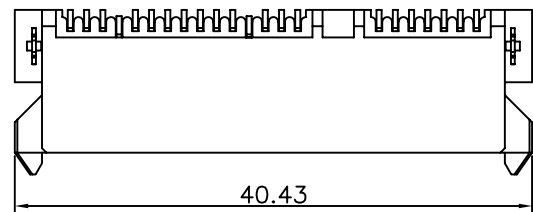
PIN NUMBER  
 00:7+15P

△ THREE PLASTIC COLUMNS OPTION  
 0: WITH THREE PLASTIC COLUMNS  
 1: WITHOUT THREE PLASTIC COLUMNS



RECOMMENDED P.C.BOARD

NOTE: 1. P.C.B LAYOUT TOLERANCE: ±0.05mm  
 2. SMT COPLANARITY TOLERANCE Max: 0.13mm



GENERAL TOLERANCE ±0.25mm GENERAL ANGLE TOLERANCE ±3° ⊕ - -	WIESON TECHNOLOGIES CO., LTD		PART NO.: G1212-82*****-00	
	DRAWN BY	ZPEI(WSC)	DRAWING NO.	G1212-82*****-00
	CHECKED BY	JINKENS	DRAWING SIZE	A4
	APPROVED BY	JINKENS	UNIT	mm
	SORTING NO.	CA0089(WSC)	PAGE	1 OF 1

PROPOSAL

[ARTICLE:044033 V4]