

RoHS Compliant

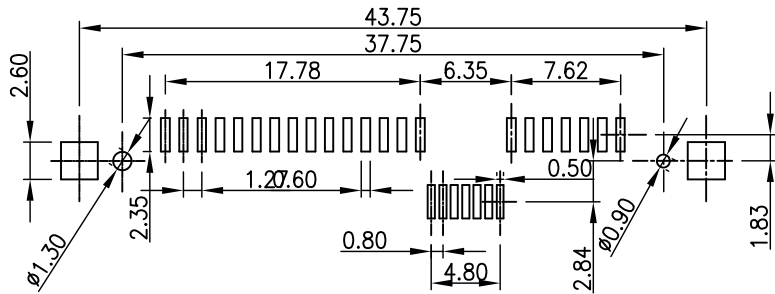
1213 SERIES SAS 29P FEMALE SMT TYPE

REV	DATE	DESCRIPTION	ECN NO.	NAME
A	14.11.27	PROPOSAL		LINJYU

MATERIAL

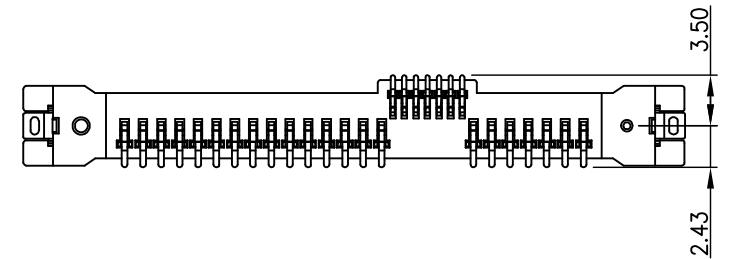
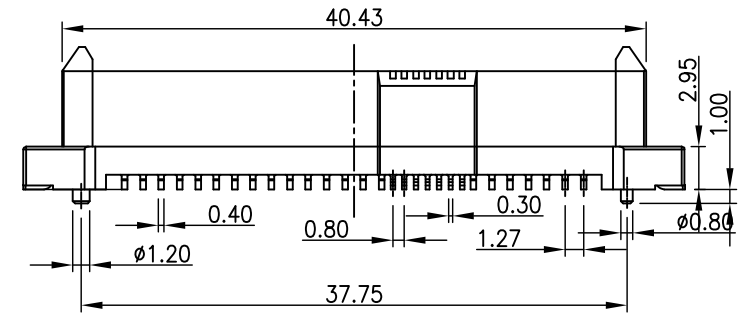
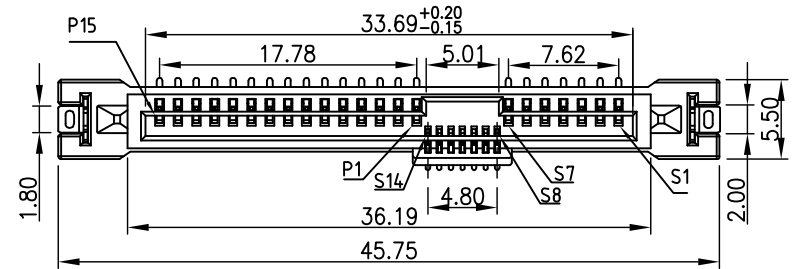
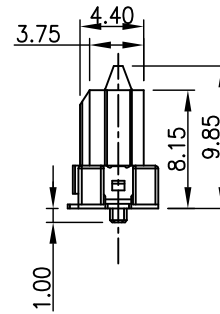
HOUSING: SEE ORDER INFORMATION (UL94V-0)
 HOUSING COLOR: SEE ORDER INFORMATION
 TERMINAL: PHOSPHOR BRONZE
 TERMINAL PLATING: SELECTION Au IN CONTACT AREA, 80u"
 min. Sn IN SOLDER TAIL AREA, BOTH
 OVER 30u" min. Ni UNDERPLATE
 OVERALL

G1213-02 ** ** *-00
 HOUSING MATERIAL: 00:LCP
 HOUSING COLOR: 00:BLACK
 TERMINAL PLATING:
 01:15u" Au
 02:30u" Au



RECOMMENDED P.C.BOARD

NOTE: P.C.B LAYOUT TOLERANCE: ±0.05mm



GENERAL TOLERANCE ± 0.25mm GENERAL ANGLE TOLERANCE ± 3°	WIESON TECHNOLOGIES CO., LTD		PART NO.: G1213-02XXXXXX-00	
	DRAWN BY	LINJYU(WSC)	DRAWING NO.	G1213-02XXXXXX-00
	CHECKED BY	JINKENS	DRAWING SIZE	A4
	APPROVED BY	JINKENS	UNIT	mm
	SORTING NO.	CB0169(WSC)	PAGE	1 OF 1

PROPOSAL

[ARTICLE:044033 V6]