

RoHS Compliant

3179 SERIES D-SUB 90° DIP TYPE

| REV | DATE | DESCRIPTION | ECN NO. | NAME |
|-----|----------|-------------|---------|-------|
| A | 12.11.27 | PROPOSAL | | LRP |
| A1 | 13.09.06 | △ MODIFY | | LRP |
| A2 | 16.03.30 | △ MODIFY | | Huhao |

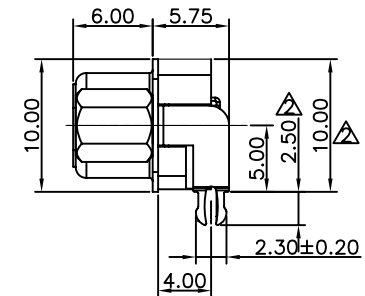
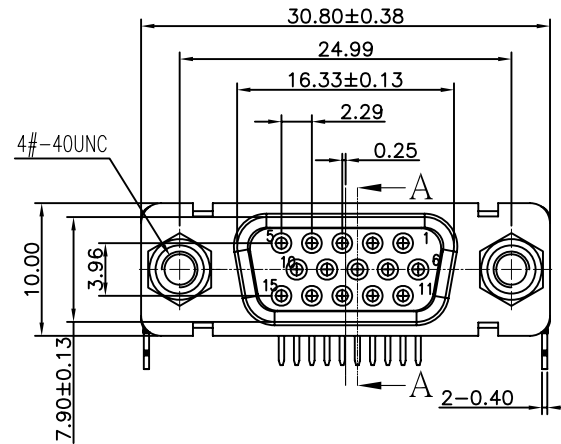
MATERIAL

HOUSING: SEE ODDER INFORMATION (UL94V-0)
 HOUSING COLOR: SEE ODDER INFORMATION
 TERMINAL: BRASS
 TERMINAL PLATING: SELECTIVE Au IN CONTACT AREA, 80u"
 min. Sn IN SOLDER TAIL AREA, BOTH
 OVER 30u" min. Ni UNDERPLATED
 OVERALL

SHELL: SPCC
 SHELL PLATING: 80u"min. Ni OVER 50u" min. Cu
 UNDERPLATED OVERALL

HARPOON: BRASS
 HARPOON PLATING: 80u"min. Sn OVER 30u" min. Ni
 UNDERPLATED OVERALL

RIVET: BRASS
 RIVET PLATING: 60u" min. Ni PLATED
 SCREW: BRASS
 SCREW PLATING: 60u" min. Ni PLATED



ORDER INFORMATION
 G3179-27 ** ** *-00

HOUSING MATERIAL&COLOR

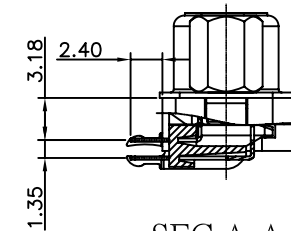
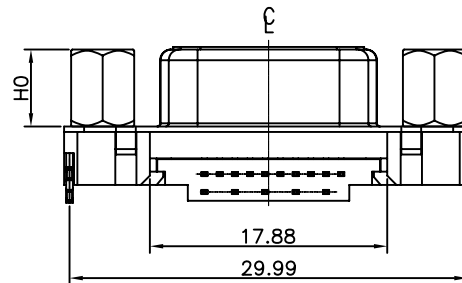
- 00: PBT; BLACK
- 01: PBT; BLUE
- 02: PA9T; BLACK
- 03: PA9T; BLUE

SCREW

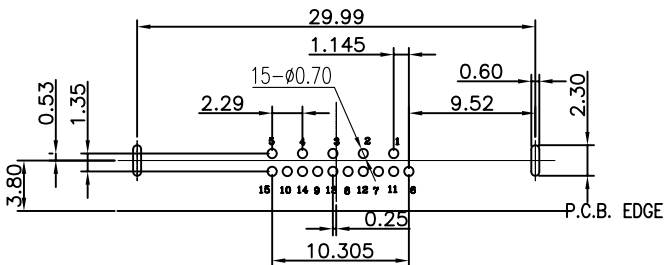
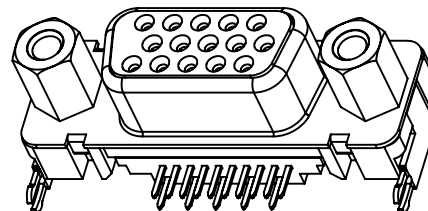
- 00: WITHOUT SCREW
- 01: WITH SCREW(H0*9.5),H0=4.8mm
- 02: WITH SCREW(H0*9.5),H0=5.8mm

TERMINAL PLATING

- 01: G/F
- 02: 15u" Au
- 03: 30u" Au



SEC:A-A



RECOMMENDED P.C.B. BOARD HOLE LAYOUT

NOTE: P.C.B LAYOUT TOLERANCE: ±0.05mm

| | | | | |
|---------------------------------|------------------------------|-------------|-------------------------------|------------------------------|
| GENERAL TOLERANCE ± 0.25mm | WIESON TECHNOLOGIES CO., LTD | | PART NO.: G3179-27*****-00 | |
| | WIESON | DRAWN BY | LRP(WSC) | DRAWING NO. G3179-27*****-00 |
| GENERAL ANGLE TOLERANCE ± 3° | CHECKED BY | JINEKNS | DRAWING SIZE | A4 |
| | APPROVED BY | JINKENS | UNIT | mm |
| ⊕ | SORTING NO. | CA0210(WSC) | PAGE | 1 OF 1 |

PROPOSAL

[ARTICLE:044033 V6]