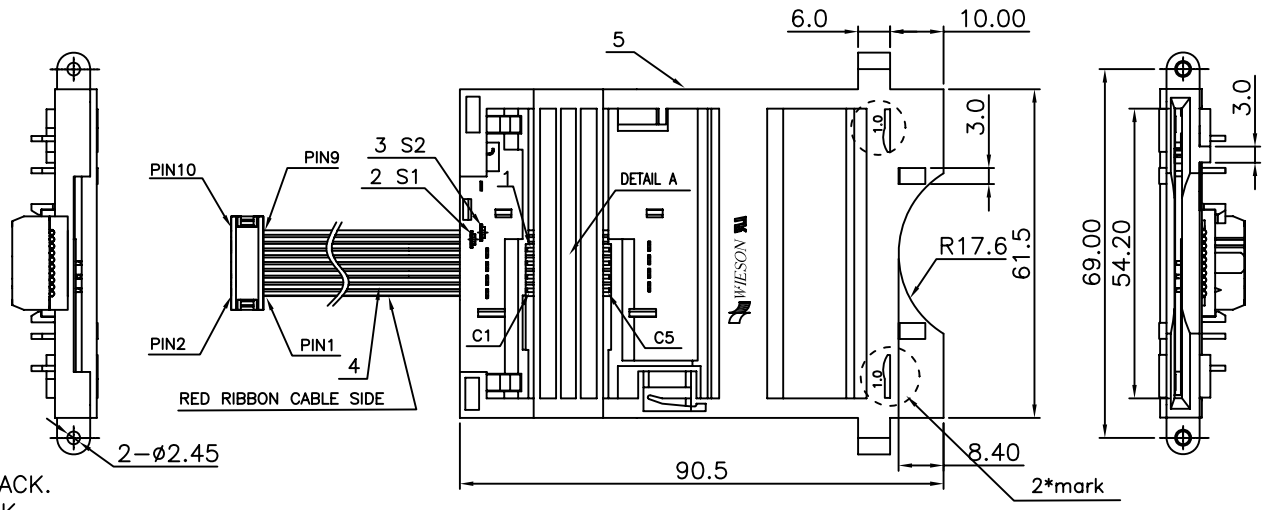
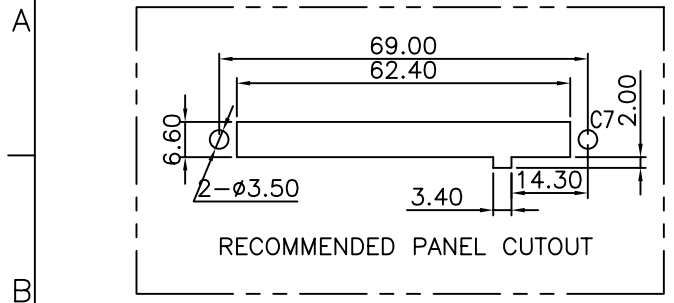


RoHS Compliant

G6170 SERIES SMART CARD

REV	DATE	DESCRIPTION	ECN NO.	NAME
A	07.04.24	NEW RELEASE		TXJ
B	07.09.07	△ MODIFICATION	CECR07002285	HJING
C	11.08.20	△ ADD ORDER INFORMATION	CECR11006509	SYP



NOTE:

- MATERIAL:  
HOUSING : THERMOPLASTIC; UL94V-0, COLOR: BLACK.  
COVER : THERMOPLASTIC; UL94V-0, COLOR: BLACK.  
TERMINAL : COPPER ALLOY.  
SWITCH TERMINAL : COPPER ALLOY.  
FLAT CABLE : PVC; UL2651, 28 AWG. 10 CONDUCTOR,  
PITCH: 1.27mm, COLOR: GRAY.△  
LENGTH: CAN BE CHOOSE

2.TERMINAL AND SWITCH TERMINAL PLATING:

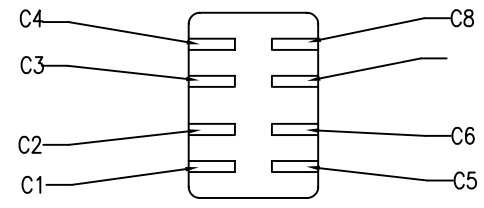
- SELECTIVE Au PLATED ON CONTACT ,
- Sn IN CABLE CONTACT AREA PLATED.

3.SWITCH CONTACTS: NORMAL CLOSED

4.ORDER INFORMATION

G6170-04 \*\* \*\* -00

- 01: GOLD FLASH
- 02: 3u" Au PLATED
- 03: 5u" Au PLATED
- 04: 15u" Au PLATED
- 05: 30u" Au PLATED
- △00:FLAT CABLE'S LENGTH, L=122,M(Ref)=74.8



DETAIL A CONTACTS  
SCALE 3 : 1

00	TYPE A	APERTURE	C=2.45	WITH	mark
01	TYPE A	APERTURE	C=2.15	WITH	mark
02	TYPE B	APERTURE	C=2.45	WITH	mark
03	TYPE B	APERTURE	C=2.15	WITH	mark
04	TYPE C	APERTURE	C=2.15	WITH	mark

GENERAL TOLERANCE X.X = ±0.20 X.XX = ±0.15 X.X' = ±3	WILSON TECHNOLOGIES CO., LTD		PART NO.: G6170-04*****-00	
	DRAWN BY	TXJ(WSC)	DRAWING NO.	G6170-04XXXXXX-00
	CHECKED BY	JIM	DRAWING SIZE	1 : 1 A4
	APPROVED BY	KEVIN	UNIT	mm
	SORTING NO.	WSC	PAGE	1 OF 2

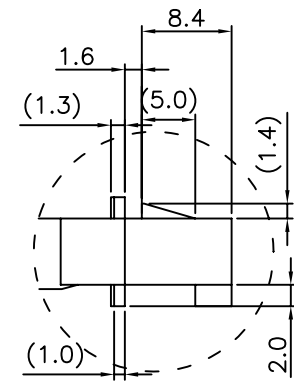
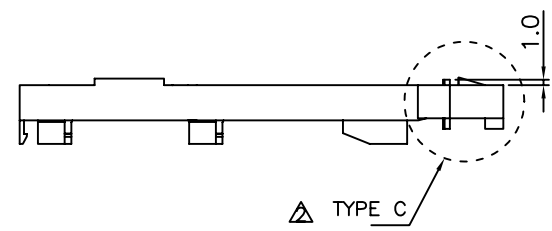
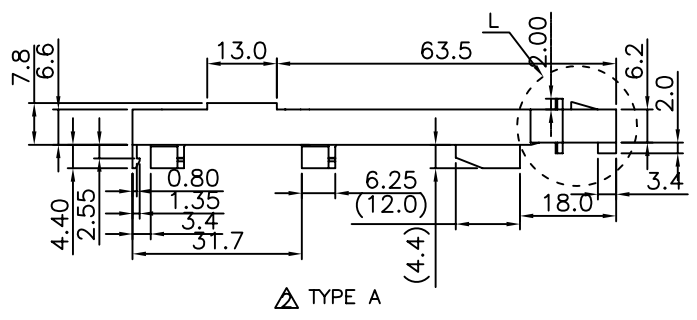
ISSUED

RoHS Compliant

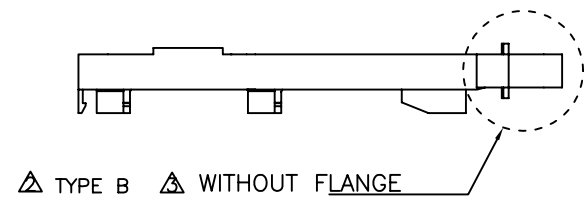
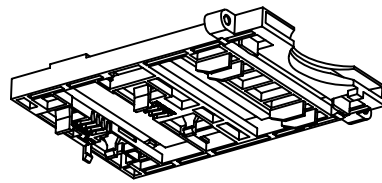
G6170 SERIES SMART CARD

REV	DATE	DESCRIPTION	ECN NO.	NAME
A	07.04.24	NEW RELEASE		TXJ
B	07.09.07	△ MODIFICATION	CECR07002285	HJING
C	11.08.20	△ ADD ORDER INFORMATION	CECR11006509	SYP

A  
B  
C  
D  
E



DETAIL L  
SCALE 2:1



WIRING DIAGRAM	
CONTACT NUMBER	CONNECTOR PIN OUT
C1	1
C2	3
C3	5
C4	7
C5	2
C6	4
C7	6
C8	8
S1	9
S2	10

ITEM	NAME	P/N	MATERIAL	QTY
1	TERMINAL	GM6170-1200XX	COPPER ALLOY	8
2	SWITCH TERMINAL1	GM6170-1500XX	COPPER ALLOY	1
3	SWITCH TERMINAL2	GM6170-1300XX	COPPER ALLOY	1
4	FLAT CABLE 10P	GFLC-10PYR***	THERMOPLASTIC	1
5	HOUSING	GM6170-10**00△	THERMOPLASTIC	1
6	COVER	GM6170-110000	THERMOPLASTIC	2
7	IDC CONNECTOR	G1100-10NAS4BBF		1

GENERAL TOLERANCE	WIESON TECHNOLOGIES CO., LTD	PART NO.: G6170-04*****-00		
X.X = ±0.20		DRAWN BY	TXJ(WSC)	DRAWING NO.
X.XX = ±0.15	CHECKED BY	JIM	DRAWING SIZE	1 : 1 A4
X.XX = ±3	APPROVED BY	KEVIN	UNIT	mm
	SORTING NO.	WSC	PAGE	2 OF 2

ISSUED