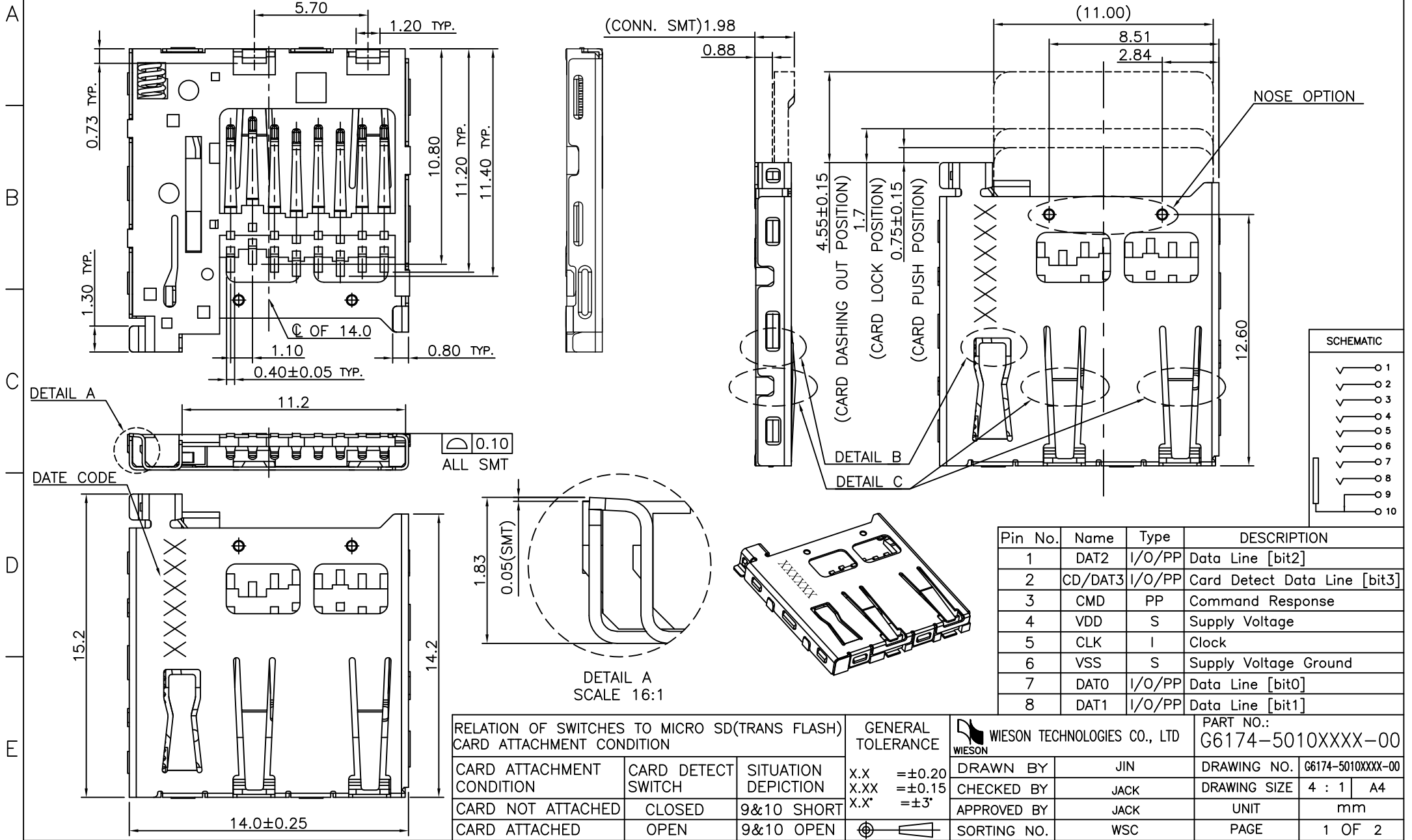


**RoHS Compliant**

**6174-SERIES MICRO SD CARD SOCKET CONN. PUSH/PUSH TYPE**

REV	DATE	DESCRIPTION	ECN NO.	NAME
A	11.05.20	PROPOSAL		JIN
B	11.10.12	NEW RELEASE		CLM



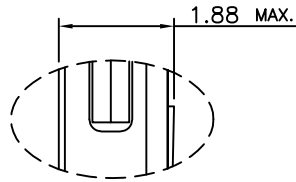
Pin No.	Name	Type	DESCRIPTION
1	DAT2	I/O/PP	Data Line [bit2]
2	CD/DAT3	I/O/PP	Card Detect Data Line [bit3]
3	CMD	PP	Command Response
4	VDD	S	Supply Voltage
5	CLK	I	Clock
6	VSS	S	Supply Voltage Ground
7	DAT0	I/O/PP	Data Line [bit0]
8	DAT1	I/O/PP	Data Line [bit1]

RELATION OF SWITCHES TO MICRO SD (TRANS FLASH) CARD ATTACHMENT CONDITION			GENERAL TOLERANCE		WIESON TECHNOLOGIES CO., LTD		PART NO.: G6174-5010XXXX-00	
CARD ATTACHMENT CONDITION	CARD DETECT SWITCH	SITUATION DEPICTION	X.X	±0.20	DRAWN BY	JIN	DRAWING NO. G6174-5010XXXX-00	
CARD NOT ATTACHED	CLOSED	9&10 SHORT	X.XX	±0.15	CHECKED BY	JACK	DRAWING SIZE 4 : 1 A4	
CARD ATTACHED	OPEN	9&10 OPEN	X.X'	±0.3	APPROVED BY	JACK	UNIT mm	
					SORTING NO.	WSC	PAGE 1 OF 2	

**RoHS Compliant**

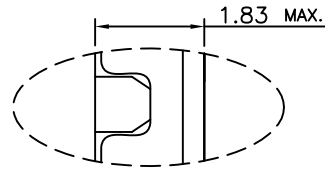
6174-SERIES MICRO SD CARD SOCKET CONN. PUSH/PUSH TYPE

REV	DATE	DESCRIPTION	ECN NO.	NAME
A	11.05.20	PROPOSAL		JIN
B	11.10.12	NEW RELEASE		CLM



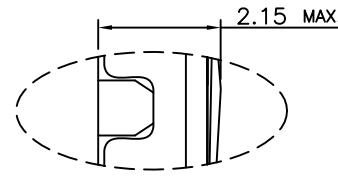
DETAIL B  
SCALE 8:1

CARD PUSH POSITION



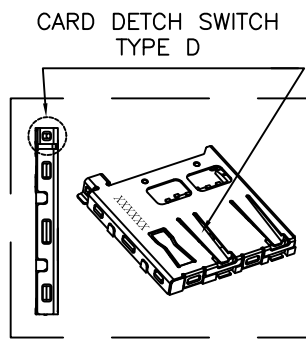
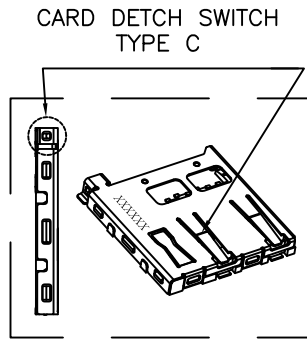
DETAIL C  
SCALE 8:1

CARD DETECT POSITION  
D TYPE



DETAIL C  
SCALE 8:1

CARD DETECT POSITION  
C TYPE

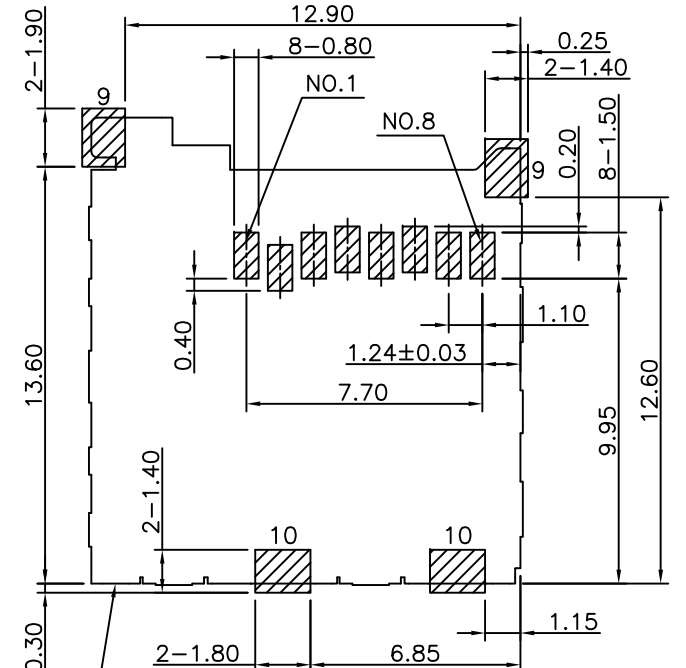


**NOTE:**

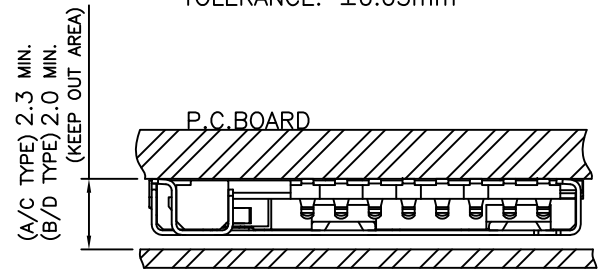
1.MATERIAL :  
HOUSING:HIGH TEMPERATURE THERMOPLASTIC,UL94V-0.  
TERMINAL&DETECT PIN:COPPER ALLOY.  
SHELL:STAINLESS STEEL.  
SPRING: STAINLESS STEEL.  
LEVER:STAINLESS STEEL.  
SLIDE:HIGH TEMPERATURE THERMOPLASTIC, UL94V-0.  
LOCK PIN:STAINLESS STEEL.  
2.PLATING :  
TERMINAL:SELECTIVE Au(SEE ORDER INFORMATION),  
100u"Sn MIN. PLATED ON SOLDER TAIL AREA.  
DETECT PIN: 1u" Au PLATED ON CONTACT AREA,  
50u"MIN.WELDABLE Ni PLATED ON SOLDER TAIL AREA.  
SHELL:1u" Au PLATED ON SOLDER TAIL AREA.  
3.ELECTRIACL CHARACTERISTIC:  
CONNECT RESISTANCE:40 MILLIONMS/PIN MAX.  
INSULATION RESISTANCE:1000 MEGAOHMS MIN.  
VOLTAGE WITHSTAND:500V AC FOR 1 MINUTE  
4.MECHANICAL CHARACTERISTIC:  
CONTACT MATING FORCE:3Kgf MAX.  
CONTACT UNMATING FORCE:100gf MIN.  
CYCLE LIFE:10000 TIMES

5.PACKAGE: TAPE&REEL  
6.USE INFORMATION  
(1)THIS C TYPE USE IN THE ORGAN THAT IS 2.3mmMIN.  
HIGH, AND THE INSERTED CARD WILL TOUCH TERMINALS  
FIRST,THEN THE DETECT PIN.  
(2)THIS D TYPE USE IN THE ORGAN THAT IS 2.0mmMIN.  
HIGH, AND THE INSERTED CARD WILL TOUCH DETECT PIN  
FIRST,THEN THE TERMINALS.  
7.ORDER INFORMATION:  
G6174-5010 X X XX-00  
① ② ③

- ③-3: C TYPE      ④-0: W/O NOSE
- ④-4: D TYPE      ④-1: W/ NOSE
- ①-01: 5u" Au PLATED ON CONTACT AREA
- ①-02: 10u" Au PLATED ON CONTACT AREA
- ①-03: 15u" Au PLATED ON CONTACT AREA



CONNECTOR OUTLINE  
RECOMMENDED PCB PATTERN LAYOUT  
TOLERANCE: ±0.05mm



IN THIS AREA,IT CAN'T LAY ANYTHING TO INTERFERED THE CARD SOCKET SAFELY OPERATING

GENERAL TOLERANCE		WIESON TECHNOLOGIES CO., LTD		PART NO.:	
X.X	=±0.20	WIESON		G6174-5010XXXX-00	
X.XX	=±0.15	DRAWN BY	JIN	DRAWING NO.	G6174-5010XXXX-00
X.X*	=±3'	CHECKED BY	JACK	DRAWING SIZE	4 : 1 A4
⊕		APPROVED BY	JACK	UNIT	mm
		SORTING NO.	WSC	PAGE	2 OF 2

ISSUED

[ARTICLE:044033 V6]