

**RoHS Compliant**

7412 SERIES RJ-45 DUAL PORT

REV	DATE	DESCRIPTION	ECN NO.	NAME
A	07.08.07	NEW RELEASE		Amcen
B	09.01.21	△MODIFY	CECR09003976	wzbin

**MATERIAL**

HOUSING: SEE ORDERING INFORMATION (UL94V-0)  
 HOUSING COLOR: BLACK  
 TERMINAL: PHOSPHOR BRONZE(φ0.46MM)  
 TERMINAL PLATING: FULL Au OVER 50u" min. Ni UNDER PLATED OVERALL,SEE ORDERING INFORMATION  
 SHELL: BRASS(0.23MM THICKNESS)  
 SHELL PLATING: 50~100u" Ni OVER 50u" min. Cu UNDER PLATED OVERALL

**ORDERING INFORMATION**  
 G7412-09 \*\* \* \* \*\* - OS

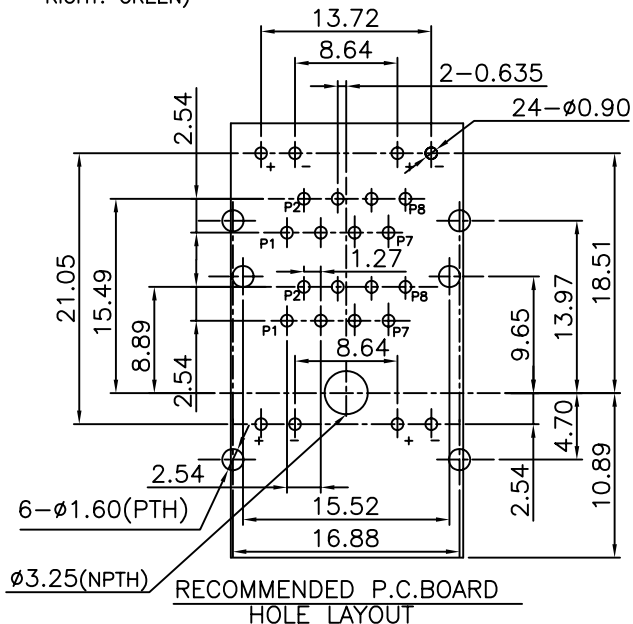
00: 8P8C 02: 8P4C  
 01: 8P6C 03: 8P2C

**MATERIAL OPTIONS**  
 0: NL46, BLACK  
 1: NL66, BLACK  
 2: PBT, BLACK

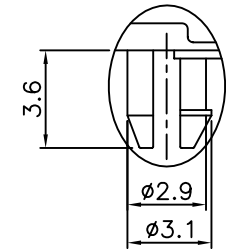
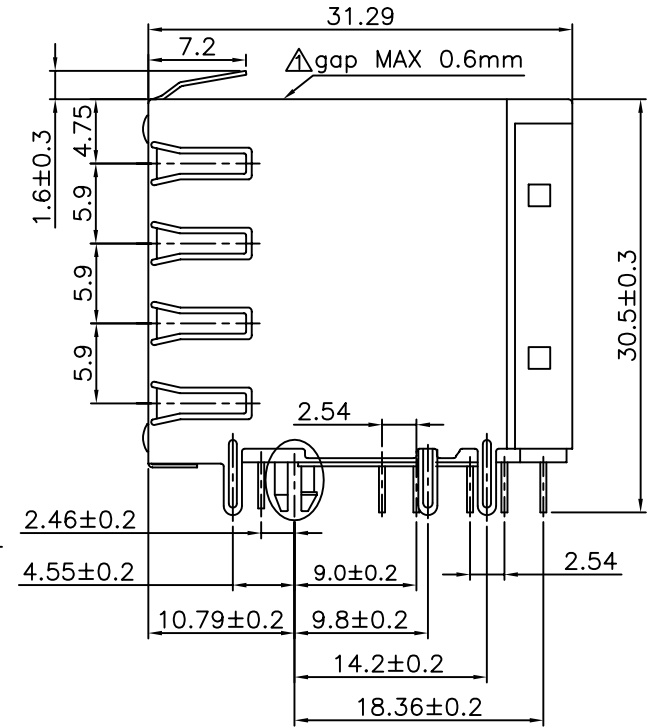
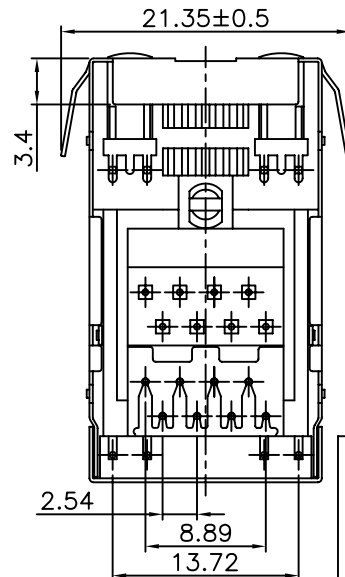
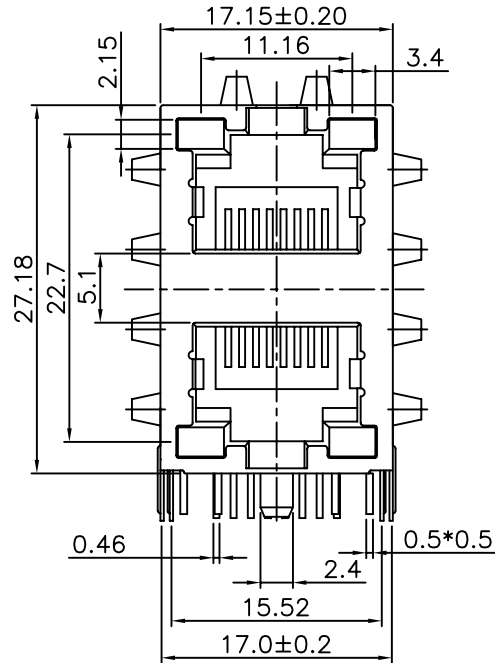
**PLATED OPTIONS**  
 01: 1u"MIN. Au  
 02: 3u"MIN. Au  
 03: 6u"MIN. Au  
 04: 15u"MIN. Au  
 05: 30u"MIN. Au (FULL Au)

**LED OPTIONS**

0: WITH LED,  
 LED1 COLOR YELLOW Screen Transparent  
 LED2 COLOR GREEN Screen Transparent  
 1: WITH LED(LEFT: ORANGE&GREEN,  
 RIGHT: GREEN)



NOTE: P.C.B LAYOUT TOLERANCE: ±0.05mm



SCALE 2:1(A1)

GENERAL TOLERANCE ± 0.25 mm GENERAL ANGLE TOLERANCE ± 3°	WIESON TECHNOLOGIES CO., LTD	PART NO.: G7412-09*****-OS		
	DRAWN BY	Amcen (WSC)	DRAWING NO.	G7412-09*****-OS
	CHECKED BY	KEVIN	DRAWING SIZE	A4
	APPROVED BY	JERRY	UNIT	mm
	SORTING NO.	CA0108(WSC)	PAGE	1 OF 1

ISSUED