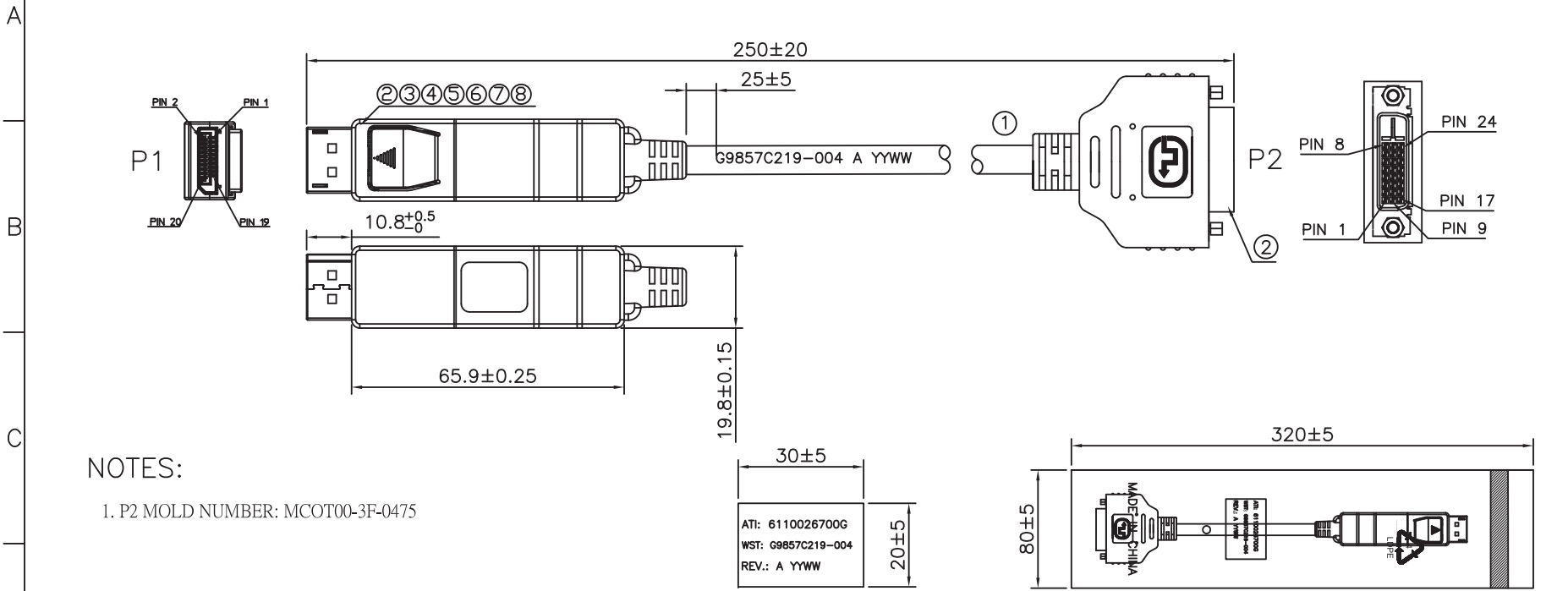


Customer Drawing

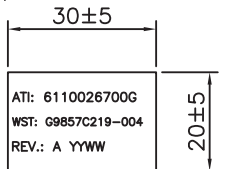
RoHS Compliant

REV	DATE	DESCRIPTION	ECN NO.	NAME
A	09.03.30	NEW RELEASE		
A	09.08.26	CHANGE CUST NO.:	CECR09004686	LXPENG

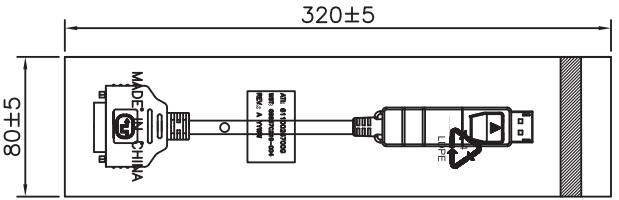


NOTES:

1. P2 MOLD NUMBER: MCOT00-3F-0475



LABEL



PACKAGE

⑩	DVI-D FEMALE	DVI-D FEMAEL,24+1P,WITH NUT,CONTACT: G/F,INSULATION:WHITE.	1
⑨	PCBA	PCBA	1
⑧	SHELL-LOWER	SHELL-LOWER.	1
⑦	SHELL-UPPER	SHELL-UPPER.	1
⑥	LATCH-RIGHT	LATCH-RIGHT.	1
⑤	LATCH-LEFT	LATCH-LEFT.	1
④	COVER-DOWN	COVER-DOWN.	1
③	COVER-UP	COVER-UP.	1
②	DISPLAYPORT CONN	DISPLAYPORT PLUG.	1
①	CABLE	[30AWG(7/0.102 TINNED COPPER*1PAIR)+DRAIN+AL-FOIL/MYLAR]*4C+30AWG(7/0.102 TINNED COPPER)*1PAIR+30AWG(7/0.102 TINNED COPPER)*5C, AL-FOIL/MYLAR+BRAID (16/9/0.10 TINNED COPPER),BLACK(BC01)PVC JACKET,UL 20276,HDMI1.3a,OD:5.5mm.	1
NO.	ITEM	DESCRIPTION	QTY

CUST NO.:  
6110026700G ▲

PART NO.:  
G9857C219-004

WIESON TECHNOLOGIES CO., LTD

TITLE:			
DISPLAYPORT TO DVI JACK CABLE			
DRAWN BY	LXPENG(WSC)	DRAWING NO.	G9857C219-004
CHECKED BY	TAMMY	DRAWING SIZE	NONE A4
APPROVED BY	TOLIN YANG	UNIT	mm
SORTING NO.	WSC	PAGE	1 OF 1