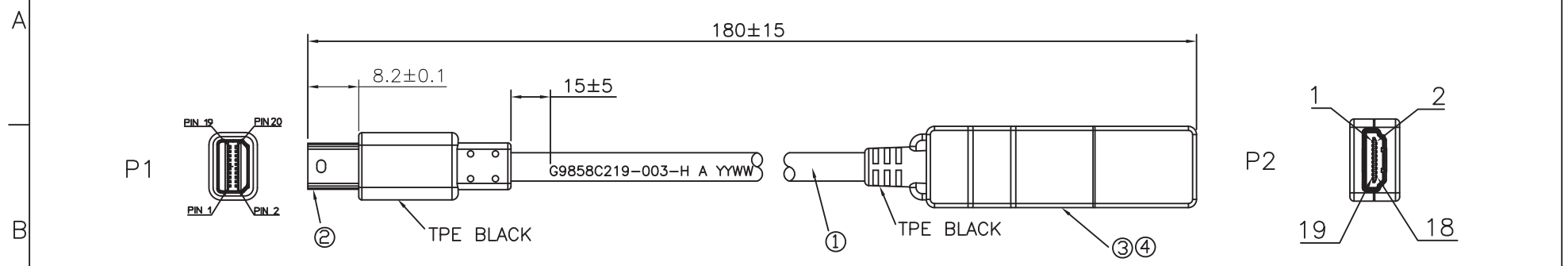


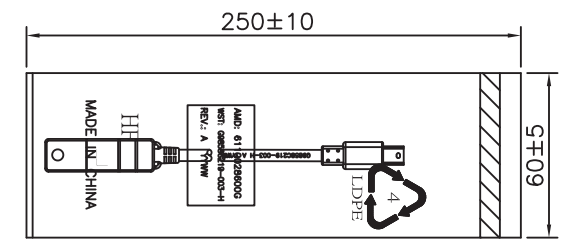
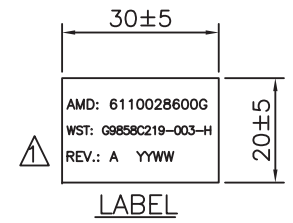
RoHS Compliant

REV	DATE	DESCRIPTION	ECN NO.	NAME
A	09.08.14	NEW RELEASE		LXPENG
A	09.10.21	⚠ LABEL ADD D/C	CECR09004781	LXPENG



PIN ASSIGNMENT

P1	P2	P1	P2
1 DO_GND	2 HPD	2 HPD	18
3 IN_DO+	1	4 CONFIG 1	13
5 IN_DO-	3	6 CONFIG 2	14
7 D1_GND	5	8 D3_GND	11
9 IN_D1+	4	10 IN_D3+	10
11 IN_D1-	6	12 IN_D3-	12
13 D2_GND	8	14 AUX_GND	16
15 IN_D2+	7	16 AUX +	15
17 IN_D2-	9	18 AUX -	17
19 GND	19	20 POWER	20
		SHELL BRAID SHELL	



- NOTE :
1. THIS IS FOR HALOGEN FREE.
 2. PI TOOL NO: MLCW-DP-1337 MLCW-DP-1338.
 3. P2 SR TOOL NO: MCSR00-6W-1282.

PACKAGE

CUST NO.:	6110028600G
PART NO.:	G9858C219-003-H

WIESON TECHNOLOGIES CO., LTD
WIESON

NO.	ITEM	DESCRIPTION	QTY	SORTING NO.	WSC	PAGE	1 OF 1
④	HDMI FEMALE	HDMI 19P A TYPE FEMALE,CONTACT: GOLD FLASH,BLACK INSULATION(HF)	1	TITLE:			
③	PCBA	PCBA(HF)	1	MINI DP 20P MALE TO HDMI 19P FEMALE CABLE(HF)			
②	MINI DP PLUG	MINI DISPLAYPORT PLUG,20P(HF)	1	DRAWN BY	LXPENG(WSC)	DRAWING NO.	G9858C219-003-H
①	CABLE	UL21451 (32AWG*1P+D+AL/MY)*5C+32AWG*5C+MY/AL+BRAID+PAPER JACKET MPPE-PE BLACK OD:5.5mm(HF)	1	CHECKED BY	TAMMY	DRAWING SIZE	NONE A4
				APPROVED BY	TOLIN YANG	UNIT	mm