

REV	DATE	DESCRIPTION	ECN NO.	NAME
A	21.07.17	PROPOSAL		WCQUAN

HF Compliant

2810 SERIES 0.80*1.20mm PITCH HIGH SPEED PIN
HEADER SMT TYPE

NOTE:

1.MATERIAL:

(1)HOUSING: LCP, UL94V-0, COLOR: BLACK.

(2)TERMINAL: BRASS

2.TERMINAL PLATING:

FULL Au: FULL Au OVER 30u" min. Ni
UNDER PLATED OVERALL

SELECTIVE Au: SELECTIVE Au IN CONTACT AREA,
80u" min. Sn IN SOLDER TAIL AREA,
BOTH OVER 30u" min. Ni UNDERPLATE
OVERALL

3.SPECIFICATION:

3-1. Voltage Rating: 125V AC/DC

3-2. Current Rating: 0.75A Max

3-3. Withstand Voltage: 500V AC/minute

3-4. Insulation Resistance: 1000MΩ Min.

3-5. Contact Resistance: 20mΩ Max

3-6. Temperature Range: -40°C~+105°C

3-7. Max Processing Temp: 230°C For 60 Seconds.
260°C For 10 Seconds.

3-8. The Connector is RoHS compliant and Halogen-Free

4.ORDER INFORMATION : AC2810-01 XX XX XX -HH
① ② ③

⑩ PIN NUMBER:

02: 2*02P

03: 2*03P

S

50: 2*50P

⑪ PACKING:

00: TUBE

⑫ TERMINAL PLATING:

01: GOLD FLASH 11: GOLD FLASH

02: 3u" Au 12: 3u" Au

03: 5u" Au 13: 5u" Au

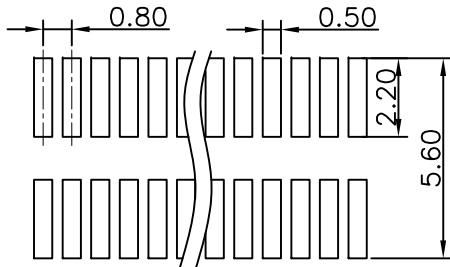
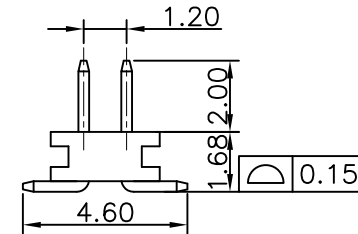
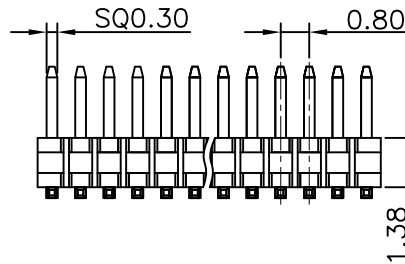
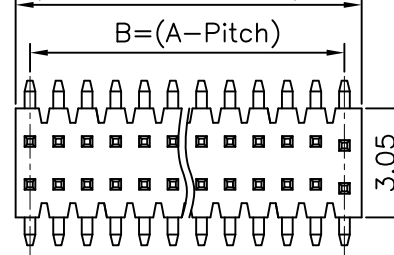
04: 10u" Au 14: 10u" Au

05: 15u" Au 15: 15u" Au

06: 30u" Au 16: 30u" Au

FULL Au SELECTIVE Au

$A = (\text{Pitch} \times \text{No. of contact}) \pm 0.30$



RECOMMENDED PCB LAYOUT
TOLERANCE: ±0.05mm

GENERAL TOLERANCE		WIESON TECHNOLOGIES CO., LTD		CUST NO.:	
X.X	=±0.30	DRAWN BY	WCQUAN(WSC)	PART NO.:	
X.XX	=±0.20	CHECKED BY	YXJ	AC2810-01XXXXXX-HH	
X.X*	=±3'	APPROVED BY	JIM	STANDARD NO.	AC2810-01XXXXXX-HH
		SORTING NO.	CA0205(WSC)	DRAWING SIZE	1:1 A4
				UNIT	mm
				PAGE	1 OF 1

REV	DATE	DESCRIPTION	ECN NO.	NAME
A	21.07.17	PROPOSAL		WCQUAN

HF Compliant

4285 SERIES 0.80*1.20mm PITCH HIGH SPEED FEMALE HEADER SMT TYPE

NOTE:

1.MATERIAL:

- (1)HOUSING: LCP, UL94V-0, COLOR: BLACK.
- (2)TERMINAL: PHOSPHOR BRONZE

2.TERMINAL PLATING:

- FULL Au: FULL Au OVER 30u" min. Ni UNDER PLATED OVERALL
- SELECTIVE Au: SELECTIVE Au IN CONTACT AREA, 80u" min. Sn IN SOLDER TAIL AREA, BOTH OVER 30u" min. Ni UNDERPLATE OVERALL

3.SPECIFICATION:

- 3-1. Voltage Rating: 125V AC/DC
- 3-2. Current Rating: 0.75A Max
- 3-3. Withstand Voltage: 500V AC/minute
- 3-4. Insulation Resistance: 1000MΩ Min.
- 3-5. Contact Resistance: 20mΩ Max
- 3-6. Temperature Range: -40°C~+105°C
- 3-7. Max Processing Temp: 230°C For 60 Seconds. 260°C For 10 Seconds.

3-8. The Connector is RoHS compliant and Halogen-Free

4.ORDER INFORMATION : AC4285-01 XX XX XX -HH

① PIN NUMBER:

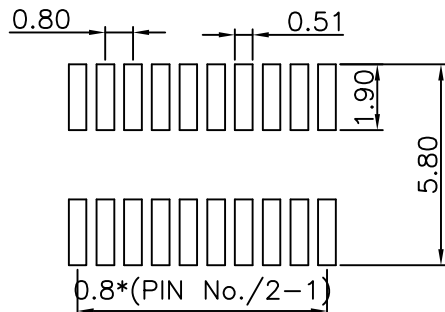
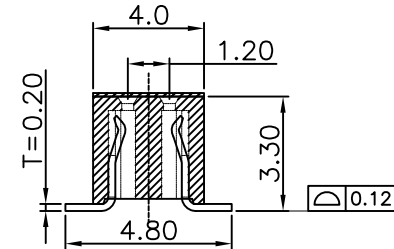
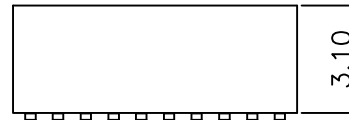
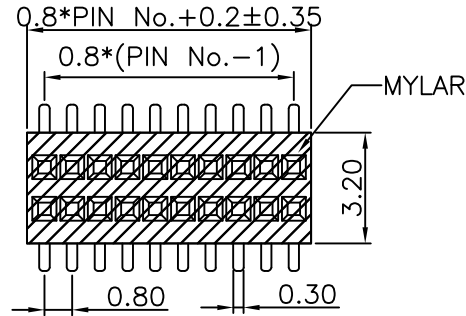
- 02: 2*02P
- 03: 2*03P
- S
- 40: 2*40P

② PACKING:

- 00: TUBE
- 01: REEL+MYLAR

③ TERMINAL PLATING:

- 01: GOLD FLASH 11: GOLD FLASH
- 02: 3u" Au 12: 3u" Au
- 03: 5u" Au 13: 5u" Au
- 04: 10u" Au 14: 10u" Au
- 05: 15u" Au 15: 15u" Au
- 06: 30u" Au 16: 30u" Au
- FULL Au SELECTIVE Au



RECOMMENDED PCB LAYOUT
TOLERANCE: $\pm 0.05\text{mm}$

CUST NO.:

PART NO.: AC4285-01XXXXXX-HH

GENERAL TOLERANCE		WIESON TECHNOLOGIES CO., LTD		STANDARD NO.	
X.X	$= \pm 0.30$	DRAWN BY	WCQUAN(WSC)	AC4285-01XXXXXX-HH	
X.XX	$= \pm 0.20$	CHECKED BY	YXJ	DRAWING SIZE	6:1 A4
X.X*	$= \pm 3^*$	APPROVED BY	JIM	UNIT	mm
		SORTING NO.	CA0205(WSC)	PAGE	1 OF 1