

# WIESON GROUP PROFILE

驊陞集團簡介



# About Wieson

## 目錄

About Wieson / Culture / Vision & Mission 關於驛陞 / 組織文化 / 公司經營理念	02
Global Location 全球據點	03
Wieson Group Organization 驛陞集團組織	04
R&D Objectives / Patents / Product Design Technology 研發方向 / 專利佈局 / 產品設計技術	05
Product Validation 產品驗證	06
Product Solution 產品解決方案	
Cloud Computing and Data Communication 雲端運算方案	07
Medical Electronics Solution 醫療電子解決方案	11
IPC Solution 工業電腦解決方案	13
Electronic Products Solution 電子產品解決方案	17
GPU & PC Solution 圖形處理器 & 個人電腦解決方案	19
Networking / PC / Gaming Solution 網路通訊 / 電腦 / 電競無線解決方案	23
Edge Server / Small Cell 邊緣運算 / 小型基地台無線解決方案	26
Automotive Electronics Product Solution 汽車電子產品解決方案	27
Core Technology Capability 核心技術能力	29
Automation Technology Capability 自動化技術能力	36

# About Wieson

## 關於驛陞

Wieson Technologies has dedicated to mechatronic integration and the innovative manufacturing in green technologies since 1990. Its business journey started from self-owned brand and ODM to the world-renowned connectivity components.

With breakthrough innovation and continuous improvement, our business scope now extends to interconnect components, wireless components and automotive electronics. Meanwhile, we actively develop internet of Things (IoT) applications in these years as well. Through the integration and intelligent technologies of the hardware and software, we aim to enhance efficiency and improve quality of life.

驛陞科技集團，自1990年起多年來深耕於機電整合與環保綠能的技術研發與製造，並不斷創新突破，目前擁有連接零組件、無線零組件及汽車電子產品事業。市場橫跨電腦、通訊、消費電子、汽車產業等領域，並積極發展IoT物聯網相關應用，提供完善方案及系列化產品，成為客戶最佳的合作夥伴。

## Culture

### 組織文化

Wieson employees are willing to help colleagues and be friendly. The discipline, honesty and hard-working are important to our company. We emphasize on cost optimization, production efficiency as well as quality control. Wieson will always be a great company.

驛陞員工都願意幫助同事、對同事友善、重視紀律、誠實、努力工作，並且強調成本與生產力和品質的重要性，Wieson 將會是一個很棒的公司。

## Vision & Mission

### 公司經營理念



#### Excellence 優質

We deliver more than we promise  
提供優良的產品品質及服務才是企業決勝的關鍵



#### Innovation 創新

We encourage better changes  
以持續不斷的研發創新才是企業成長的要素



#### Trustworthiness 誠信

We honor the commitments we make  
堅持互助、互信的態度才是企業經營的根本



#### Appreciation 感恩

We respect customers, employees and shareholders  
在追求企業利潤之虞也不忘回饋於社會

# Global Location 全球據點

## Taiwan Headquarters 台灣總公司



**Wieson Technologies Co., LTD.**  
Capital: USD 21.25 Million  
ISO 9001, ISO/IEC 17025

驊陞科技股份有限公司  
資本額: 新台幣6.66億元

## Manufacturing / R&D Center 製造基地 / 研發中心



**Taiwan Manufacturing Plant**  
2,855m<sup>2</sup> Plant  
Connector, High Frequency Cable,  
Electronic Products (ODM/OEM)  
ISO 9001, ISO 13485

台灣工廠  
廠房2,855平方公尺  
連接器、高頻連接線  
電子類產品 (ODM/OEM)



**Wieson Technologies (Dongguan)**  
41,000m<sup>2</sup> Land  
48,000m<sup>2</sup> Plant  
Connector, Cable, Antenna,  
Electronic Products (ODM/OEM)  
IATF 16949, ISO 9001, ISO 14001,  
ISO/IEC 17025, ISO 13485

驊國電子(東莞)  
土地41,000平方公尺  
廠房48,000平方公尺  
連接器、連接線、天線、  
電子類產品 (ODM/OEM)



**Wieson Automotive (Kunshan)**  
26,667m<sup>2</sup> Land  
25,850m<sup>2</sup> Plant  
Automotive Components & Antenna,  
Automotive Electronics  
IATF 16949, ISO 9001, ISO 14001

驊盛車用電子(昆山)  
土地26,667平方公尺  
廠房25,850平方公尺  
車用連接器、線束、天線、  
車用電子



**Guangxi, China Manufacturing Plant**  
12,000m<sup>2</sup> Plant  
Data Cable, DC Cord, Wire Harness,  
Consumer Electronics Products  
IATF 16949, ISO 9001, ISO 14001,  
ISO 45001, ISO 13485, QC080000

中國廣西工廠  
廠房12,000平方公尺  
數據線、直流電源線、線束、  
消費性電子產品



**North Vietnam Plant (Vinh Phuc Province)**  
Antenna and Cable assembly plant

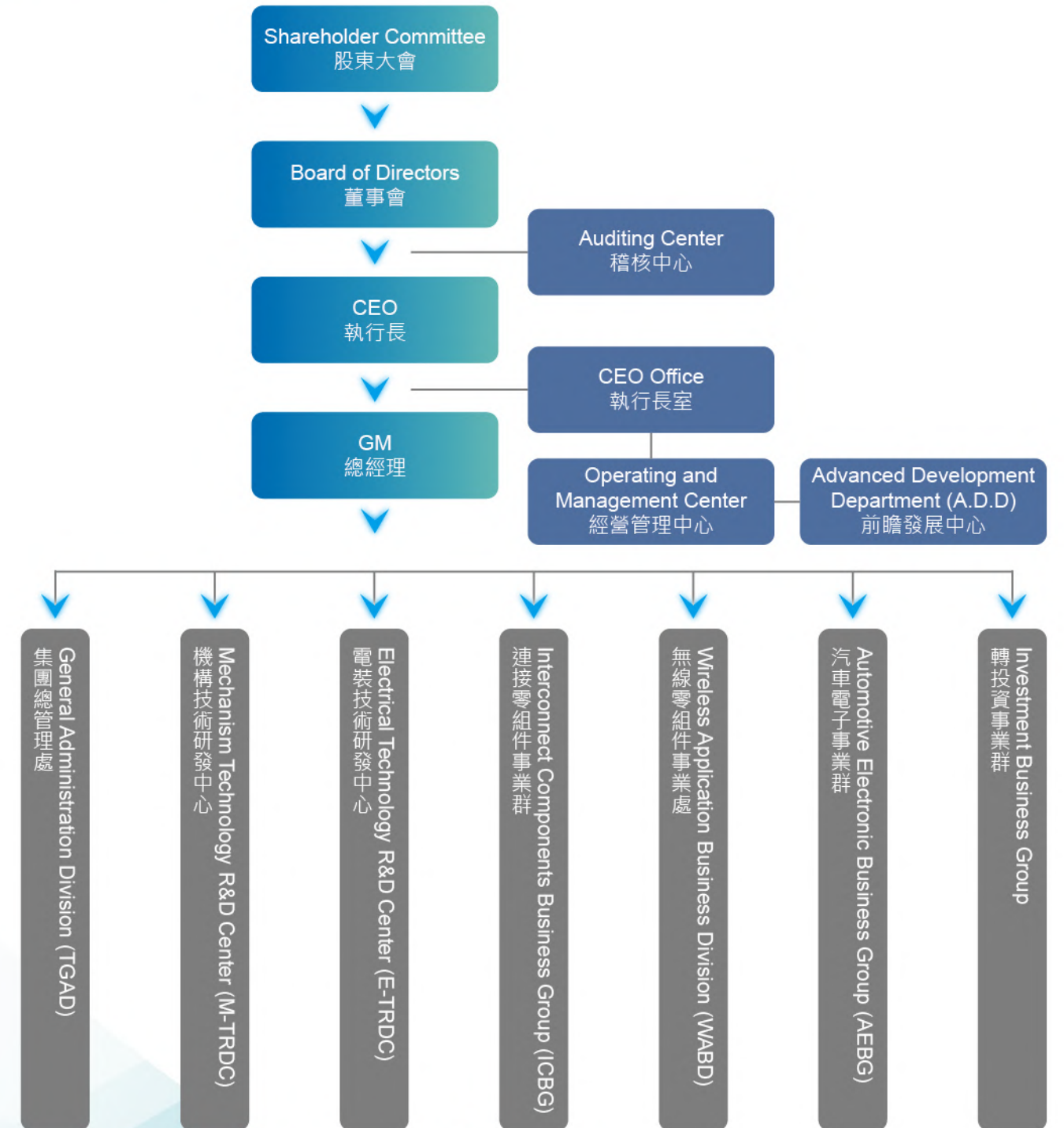
越南永福工廠(北越)  
天線和連接線專屬加工廠

## Sales Office 銷售中心




San Jose, USA  
New York, U.S.A  
Atlanta, U.S.A  
Seoul South, Korea

美國, 聖荷西  
美國, 紐約  
美國, 亞特蘭大  
韓國, 首爾

# Wieson Group Organization 驊陞集團組織



# R&D Objectives 研發方向






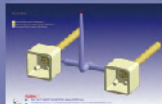
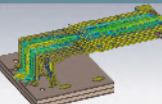
<b>Interconnect Components</b> 連接零組件 	<ul style="list-style-type: none"> <li>- High frequency, high speed technology 高頻高速傳輸技術</li> <li>- Precision mechanical design technology 精密機構設計技術</li> <li>- Precision tooling design technology 精密模具設計技術</li> </ul>	<ul style="list-style-type: none"> <li>- Verification &amp; testing technology 產品測試驗證技術</li> <li>- Water-proof technology 防水機構設計技術</li> <li>- Auto manufacturing technology 智能自動生產技術</li> </ul>
<b>Wireless Components</b> 無線零組件 	<ul style="list-style-type: none"> <li>- Mechanical design 天線機構設計技術</li> <li>- RF circuit design 無線射頻電路技術</li> </ul>	<ul style="list-style-type: none"> <li>- Software simulation 模擬軟體輔助技術</li> <li>- Measurement platform 無線裝置測試平臺</li> </ul>
<b>Automotive Electronics</b> 汽車電子 	<ul style="list-style-type: none"> <li>- OEM/ODM electronic harness design technology OEM/ODM車用線束設計技術</li> <li>- Automotive customized connector design technology 車用客制化連接器開發技術</li> <li>- Automotive 5G antenna &amp; smart antenna design technology 車載5G天線與智能天線技術</li> </ul>	<ul style="list-style-type: none"> <li>- Automotive charging module &amp; wireless charger technology 車載充電模組與無線充電技術</li> <li>- ADAS interconnector design and high frequency, high speed technology ADAS周邊連結與高頻高速傳輸技術</li> <li>- PCBA design and manufacture technology 車載電控模組 PCBA 製造技術</li> </ul>

# Patents 專利佈局

Owned 129 Patents 已取得共 129 件專利

- 27 Invention 發明專利27件 - 18 New design 新式樣專利18件 - 84 New patents 新型專利84件

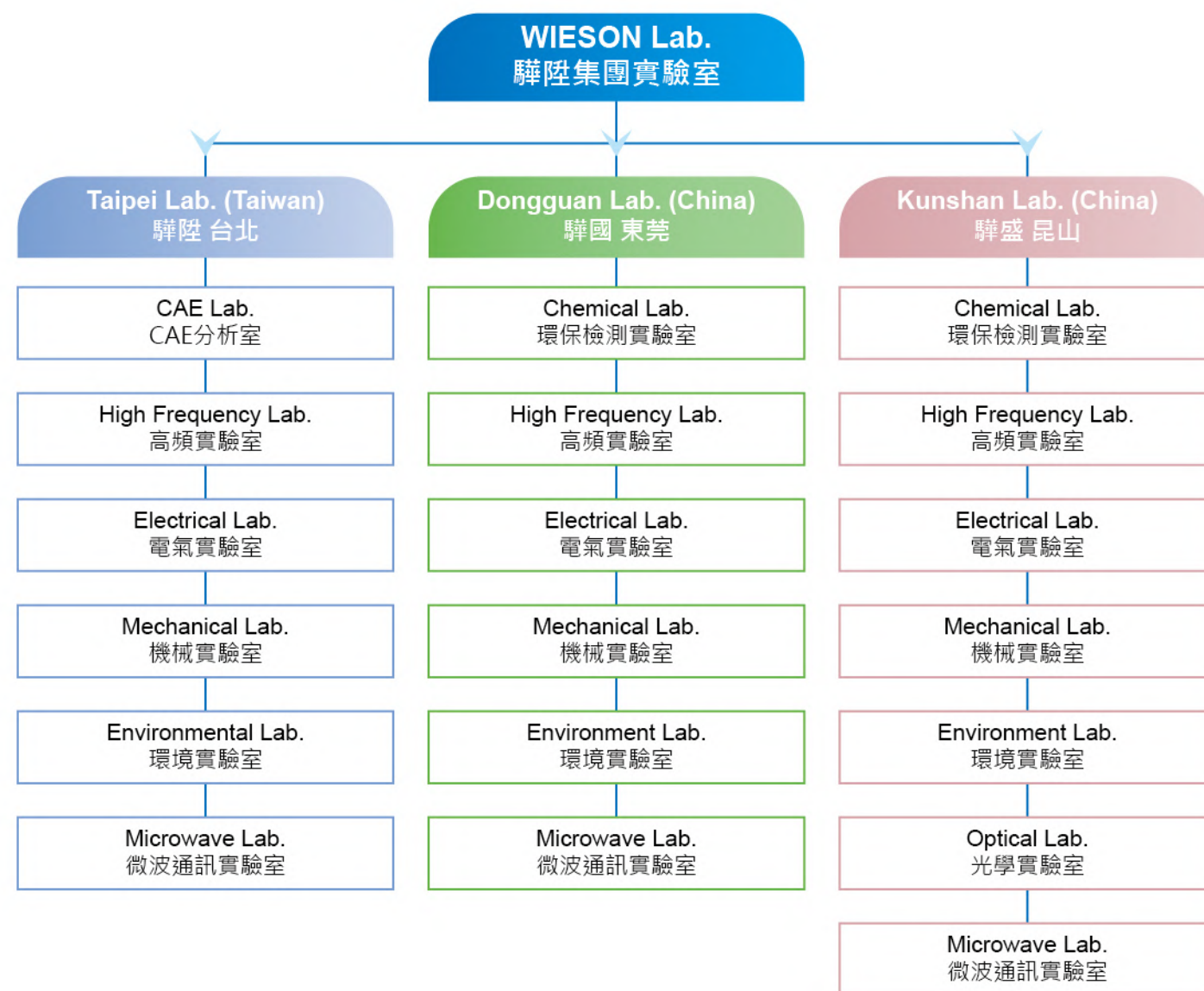
# Product Design Technology 產品設計技術

<b>Mechanical Structure</b> 機構/結構 <ul style="list-style-type: none"> <li>- Normal Force 正向力</li> <li>- Insertion &amp; Extraction Force 插入力 &amp; 拔出力</li> <li>- Stress Distribution 應力分佈</li> <li>- Deformation 應變(變形量分析)</li> </ul> 	<b>Tooling Injection</b> 模具設計 塑膠注塑 <ul style="list-style-type: none"> <li>- Filling Analysis 充填分析</li> <li>- Packing Analysis 保壓分析</li> <li>- Cooling Analysis 冷卻分析</li> <li>- Warpage Analysis 翹曲變形分析</li> </ul> 	<b>Electromagnetic Signal Integrity</b> 電磁分析/ 高速訊號 完整性分析 <ul style="list-style-type: none"> <li>- Scattering Parameters 散射參數</li> <li>- Current Distribution 電流分佈</li> <li>- Radiation Pattern 輻射場型</li> </ul> 	<b>Circuit Model / Signal Analysis</b> 電路分析/ 訊號分析 <ul style="list-style-type: none"> <li>- Circuit Cascade 電路串接分析</li> <li>- Circuit Embedded &amp; De-embedded 電路嵌入 &amp; 反嵌入分析</li> <li>- Scattering Parameters 散射參數</li> <li>- Eye-diagram 眼圖分析</li> </ul> 	<b>High Precision Mechanical CAE Design</b> 精密機構設計 CAE能力 <ul style="list-style-type: none"> <li>- Insertion &amp; Extraction Force 插入力 &amp; 拔出力</li> <li>- Stress Distribution 應力分佈</li> <li>- Deformation 變形量</li> </ul> 	<b>High Precision Tooling CAE Design</b> 精密模具設計 CAE能力 <ul style="list-style-type: none"> <li>- Tooling Design 模具設計</li> <li>- Filling Analysis 充填分析</li> <li>- Warpage Analysis 翹曲變形分析</li> </ul> 	<b>High Speed CAE Design</b> 高頻高速 CAE設計能力 <ul style="list-style-type: none"> <li>- Impedance 特性阻抗</li> <li>- Attenuation 衰減</li> <li>- Delay 延遲</li> <li>- Crosstalk 串音</li> </ul> 
--	---	---	---	---	---	--

# Product Validation 產品驗證

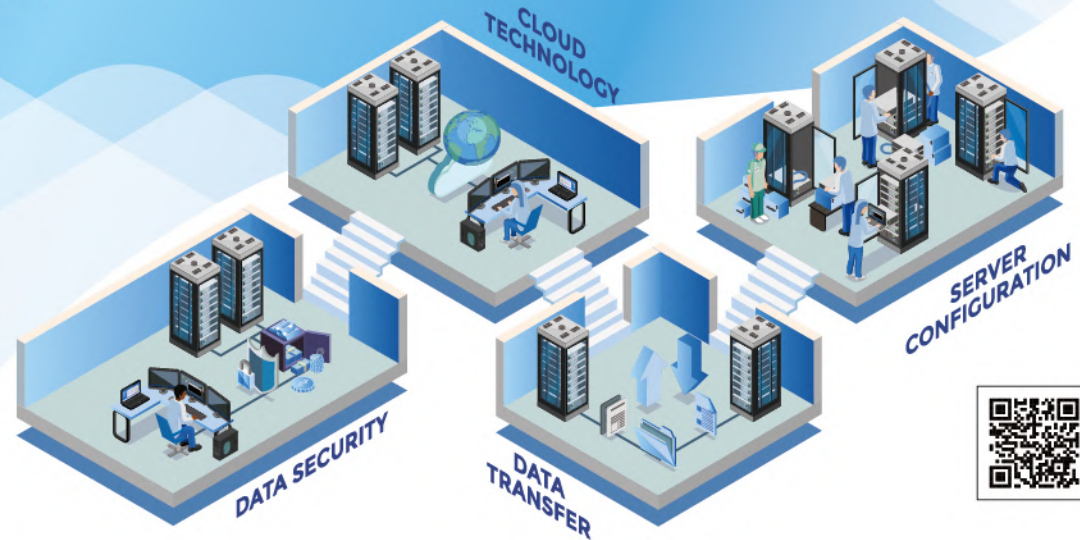
Wieson has achieved a successful transfer of technology development from components, system modules to finished products. We've stepped toward the high level capability in the field of mechanical, high-speed signal integrity, radio frequency, optics and electronics circuit design. With advanced laboratory and precision equipment, we conduct a variety of testing and inspection to ensure our highly reliable products.

驊陸科技從零組件、系統模組到成品裝置的整合開發技術，成功掌握機構、高頻、無線射頻、光學、電子電路等技術能力，更結合先進的實驗室以精密的實驗設備進行各項測試與驗證，確保產品最佳可靠性。



# Cloud Computing and Data Communication

## 雲端運算方案



### Gen Z Series

- |  |  |   |  |
|--|--|---|--|
|    | <b>G6155-2001</b><br>SFF TA-1002 VT 1C<br>High Speed Support:<br>PCIe 5.0 (32Gb/s). NRZ 32GT/S |    | <b>G6155-2004</b><br>SFF TA-1002 VT 4C+<br>High Speed Support:<br>PCIe 5.0 (32Gb/s). NRZ 32GT/S  |
|  | <b>G6155-2002</b><br>SFF TA-1002 VT 2C<br>High Speed Support:<br>PCIe 5.0 (32Gb/s). NRZ 32GT/S |  | <b>AC1216-0114</b><br>SFF TA-1002 SM 4C+<br>High Speed Support:<br>PCIe 5.0 (32Gb/s). NRZ 32GT/S |
|  | <b>G6155-2003</b><br>SFF TA-1002 VT 4C<br>High Speed Support:<br>PCIe 5.0 (32Gb/s). NRZ 32GT/S |  | <b>AB9984</b><br>x1 x4 x8 x16 Cable  |








### SFF 8639 Series

- |  |   |   |   |
|--|---|---|---|
|  | <b>G1213-60</b><br>PCIe SAS<br>PCIe SAS 68 pin,<br>15u" & 30u" (SFF 8639)<br>High Speed Support:<br>SATA 3.0 (6Gb/s) & SAS 3.0 (12Gb/s) |  | <b>G1213-64</b><br>PCIe SAS<br>PCIe SAS 68 pin,<br>15u" & 30u" (SFF 8639)<br>High Speed Support:<br>SATA 3.0 (6Gb/s) & SAS 3.0 (12Gb/s) |
|  | <b>G1213-62</b><br>PCIe SAS<br>PCIe SAS 68 pin,<br>15u" & 30u" (SFF 8639)<br>High Speed Support:<br>SATA 3.0 (6Gb/s) & SAS 3.0 (12Gb/s) |  | <b>AC1214-0400</b><br>PCIe SAS (PCIe Gen 5)<br>PCIe SAS 68 pin,<br>15u" & 30u" (SFF 8639)   |
|  | <b>G1213-63</b><br>PCIe SAS<br>PCIe SAS 68 pin,<br>15u" & 30u" (SFF 8639)<br>High Speed Support:<br>SATA 3.0 (6Gb/s) & SAS 3.0 (12Gb/s) |  | <b>AC1214-0401</b><br>PCIe SAS (PCIe Gen 5)<br>PCIe SAS 68 pin,<br>15u" & 30u" (SFF 8639)   |

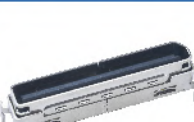


### mini SAS HD Series

- |   |  |   |  |
|---|--|---|--|
|  | <b>G1213-8000</b><br>mini SAS HD vertical 1x1,<br>15u" & 30u" (SFF 8643)<br>High Speed Support: SAS 3.0 (12Gb/s) |  | <b>G9981-02</b><br>mini SAS HD 4i to mini SAS HD 4i Cable<br>SFF 8643-SFF8643, STR to RA                             |
|  | <b>G1213-8001</b><br>mini SAS HD vertical 1x2,<br>15u" & 30u" (SFF 8643)<br>High Speed Support: SAS 3.0 (12Gb/s) |  | <b>G9981-03</b><br>mini SAS HD 4i to mini SAS HD 4i Cable<br>SFF 8643-SFF8643,<br>right side exit to right side exit |
|  | <b>G1213-8100</b><br>mini SAS HD RA 1x1,<br>15u" & 30u" (SFF 8643)<br>High Speed Support: SAS 3.0 (12Gb/s)       |  | <b>G9981-04</b><br>mini SAS HD 4i to mini SAS HD 4i Cable<br>SFF 8643-SFF8643,<br>Left Side Exit to Left Side Exit   |
|  | <b>G1213-8101</b><br>mini SAS HD RA 1x2,<br>15u" & 30u" (SFF 8643)<br>High Speed Support: SAS 3.0 (12Gb/s)       |  | <b>G9981-06</b><br>mini SAS HD 8i to mini SAS HD 8i Cable<br>SFF 8643-SFF8643,<br>Right Side Exit to Right Side Exit |
|  | <b>G9981-01</b><br>mini SAS HD 4i to<br>mini SAS HD 4i Cable<br>SFF 8643-SFF8643, STR to STR                     |  | <b>G9981-07</b><br>mini SAS HD to SFF 8639 Cable<br>SFF 8643-SFF8639 SRT to STR                                      |

### SFP Series

- |   |   |   |   |
|---|---|---|---|
|   | <b>AB9989-01</b><br>SFP+ 10G Cable<br>10G SFP+ Direct Attach Cable (DAC)                      |   | <b>AB9989-05</b><br>QSFP28 100G to QSFP 40G Cable<br>100G QSFP28 to<br>4SFP28 Direct Attach Cable (DAC) |
|  | <b>AB9989-02</b><br>SFP28 25G Cable<br>25G SFP28 Direct Attach Cable (DAC)                    |  | <b>AB9989-06</b><br>QSFP28 100G Cable<br>100G QSFP28 Direct Attach Cable (DAC)                          |
|  | <b>AB9989-03</b><br>QSFP 40G Cable<br>40G QSFP Direct Attach Cable (DAC)                      |  | <b>AB9989-07</b><br>50G SFP56 Direct Attach Cable (DAC)   |
|  | <b>AB9989-04</b><br>QSFP 40G to SFP+ 10G Cable<br>40G QSFP-4SFP+<br>Direct Attach Cable (DAC) |   |   |

### Oculink Series

- |   |  |   |   |
|---|--|---|---|
|  | <b>G1213-90</b><br>Oculink<br>Oculink 8x Vertical 15u" & 30u" (SFF 8612)<br>High Speed Support: SAS 4.0 (24Gb/s)<br>High Speed Support: PCIe 4.0 (16GT/s)        |  | <b>AC1215-03</b><br>SAS Oculink<br>Oculink 4x Vertical 15u" & 30u" (SFF 8612) |
|  | <b>G1215-01&amp;05</b><br>Oculink<br>Oculink 4x Vertical 15u" & 30u" (SFF 8612)<br>High Speed Support: SAS 4.0 (24Gb/s)<br>High Speed Support: PCIe 4.0 (16GT/s) |   |   |

## USB Series

### USB 4 Gen 3 40G



**AC3518-01**  
USB 4 Gen 3 40G Top-Mount R/A Type  
Dual row SMT, with Rugged Double  
Shell Design. TID : 6200



**AC3518-02**  
USB 4 Gen 3 40G Top-Mount  
R/A Type, Dual row SMT

### USB 3.2 (3.1)



**G3509-01**  
USB 3.2 (3.1) A Jack  
DIP Type, Female



**G3518-08**  
USB Type C 3.2 (3.1) Top-Mount  
CH: 2.75mm



**G3509-08**  
USB 3.2 (3.1) Upright A Jack  
Upright, Female



**G3518-12**  
USB Type C 3.2 (3.1) MID-Mount



**G3509-22**  
USB 3.2 (3.1) A Jack  
Standard Type, Female, 1u" Au



**G3518-14**  
USB Type C 3.2 (3.1) Top-Mount  
CH: 3.4mm



**G3509-37**  
USB 3.2 (3.1) A Jack Vertical  
Female



**G3518-15**  
USB Type C 3.2 (3.1)  
Vertical Type



**G3509-70**  
Dual USB 3.2 (3.1) A Jack  
Female

## Server Antenna Series



**ARY118**  
LTE Antenna  
698~960 / 1710~2690(MHz), [SMA]

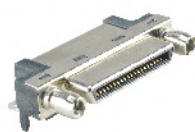


**ARY121**  
WiFi Antenna  
2400~2500 / 5150~5850 /  
5925~7125(MHz), [R.P. SMA]



**ARY115**  
LTE Antenna  
617~960 / 1452-1710 /  
2170~2690(MHz), [SMA]

## KVM Series



**G3312-06**  
KVM Connector  
0.8mm pitch SCSI VHDCI 40 pin  
Housing: Hige Thermoplastic,  
UL94V-0 Black



**G9842**  
KVM Cable  
VHDC 40 pin Male to USB 3.0 &  
D-Sub 9 pin & HDB 15 pin

## RJ Series

### RJ 45



**G7412-01**  
RJ 45 ICM conn  
8P8C, R/A, 10x100M  
DIP Type, W/Shield



**G7410-01**  
RJ 45, 1x2 Port, Transformer



**G7412-11**  
RJ 45 ICM conn  
8P8C, R/A, 10x100M  
DIP Type, W/Shield



**G7410-65**  
RJ 45, 2x1 Port, LED, Transformer



**G7412-18**  
RJ 45 ICM conn  
8P8C, R/A, 10x100x1000M  
DIP Type, W/Shield



**G7412-60**  
RJ 45 ICM conn  
8P8C, R/A, 10x100x1000M  
DIP Type, W/Shield, Vertical Type



**G7412-63**  
RJ 45 MID-Mount Type  
8.45 & 7.5mm option,  
Transformer (100/1000M)

### RJ 45 Combo



**G7412-52**  
RJ 45 + USB 2.0  
W / LED, Transformer (100/1000M)  
Surge option / PoE option



**G7412-56**  
RJ 45 + USB 3.0  
Transformer (100/1000M)  
Surge Protection



**G7412-53**  
RJ 45 + HDMI  
W / LED, Transformer (100/1000M)  
Surge option / PoE option

### RJ 10G



**G7416-01**  
RJ 45 10G  
8P17C, with LED  
6u/15u" 30u"



**G7416-05**  
RJ 45 10G  
8P19C, with LED  
6u/15u" 30u"



**G7416-02**  
RJ 45 10G  
8P12C, with LED  
6u/15u" 30u"



**G7416-04**  
RJ 45 10G  
8P12C, with LED  
6u/15u" 30u"

## Power Series



**AC2211-07**  
PCIe 5.0 Power 2x6 Power pin,  
Per pin 9.2A  
Tape & Reel

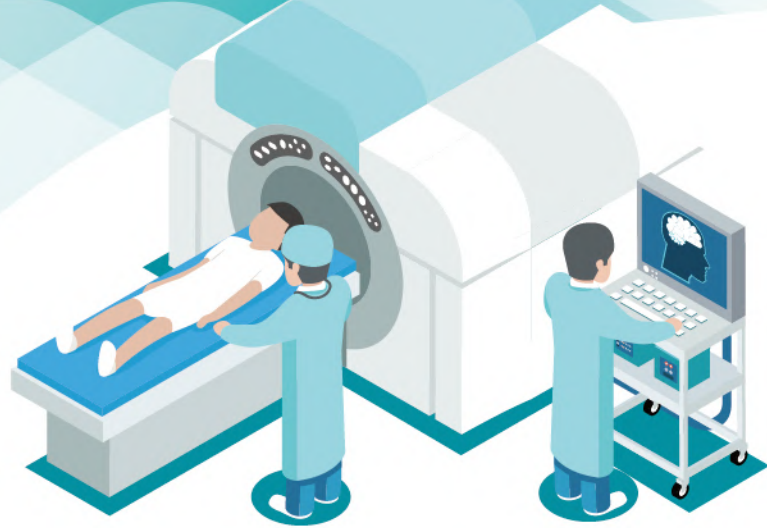


**AC2211-09**  
PCIe 5.0 Power 2x6 Power pin,  
Per pin 9.2A  
Tray



**AC2211-08**  
PCIe 5.0 Power 2x6 Power pin,  
Per pin 9.2A  
Tape & Reel

# Medical Electronics Solution 醫療電子解決方案



## Medical Cable (AB9601 Series)



**ECG Trunk Cable**  
ECG 11 pin Connector to ECG 11 pin



**Temperature Cables**  
2 pin Custom Connector and  
2 pin Custom Connector



**Holter & Telemetry Cable**  
5 lead shielded ECG cable and  
detachable leadwires with  
snap connector



**IBP Transducer Cables**  
5 pin PVB Connector and Socket



**Diagnostic & Stress Cable**  
10 lead ECG cable with custom 15 pin  
D-Sub connector and 4mm banana plug



**EEG Leadwires**  
Ear clip electrode and 1.5mm safety  
DIN socket connector



**SpO2 Cables**  
7 pin custom shielded connector and  
9 pin D-Sub female lockable connector



**TENS Leadwires Cable**  
3 pin custom connector and  
2mm DIN plug



**Nurse Call Cable**  
6.35mm plug and assembled push  
button pendant



**Monopolar Cable**  
6mm connector to  
3mm socket connector

## Board Connector Series

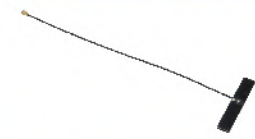


**G2852-04 (Male) / G4297-04 (Female)**  
Board to Board Connector  
Pitch 0.8mm, SMD Type  
High Speed Support:  
PCIe 4.0 (16GT/s)  
USB 4 Gen 3 (40Gbps)  
USB 3.2 Gen 2 (10Gbps)  
USB 3.2 Gen 2 Type C (10Gbps)



**G6136-38**  
FPC Connector  
Pitch 0.5mm  
SMT Type  
8,12, 24, 30 pin

## WiFi 6E Internal Antenna



**ARY196**  
· Frequency Range 2400~2500 /  
5150~7125MHz

· Material: PCB  
· V.S.W.R: 2:1

· Impedance: 50Ω  
· Radiation: Omni

## 4G+5G Internal Antenna

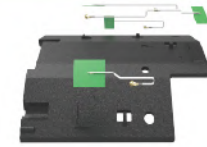


**ARY196**  
· Frequency Range 617-960 /  
1710-2690 / 3200-6000MHz

· Material: PCB  
· V.S.W.R: 3

· Impedance: 50Ω  
· Radiation: Omni

## Holder Antenna (Customized)



**ARY197 (Customized)**  
Frequency Range 824-960MHz,  
1710-2170MHz



**ARY197 (Customized)**  
Frequency Range 2400-2485MHz,  
5150-5850MHz

## IO Connector & Cable Series



**AC3168-02**  
HDMI 2.1 R/A SMT Type,  
Spring Tab & Screw Hole option  
(Approved Category 3 Connectors)



**AB9856-0023-014-00**  
HDMI 2.1 Ultra High Speed  
HDMI Cable



**AC3518-01**  
USB 4 Type C Gen 3 40G,  
Dual row SMT with  
Rugged Double shell



**AB9934-30291000-01**  
USB 4 Gen 3 Cable 1M



**AC3167-04**  
80Gbps Enhanced Mini DisplayPort  
High-Rise Type



**G9858**  
Mini DisplayPort to  
DisplayPort Cable



**G3402-12**  
USB Type C, DIP Type  
USB 3.2 Gen 2 10G



**G3402-13000001-00**  
M12 X-Code Female  
Sensor Connector (8 pin)  
IP68



**AC3401-050000XX-00**  
M8 Male and Female  
Sensor Connector (6, 8 pin)

## Electronic Series



**G9933-00**  
USB 3.1 Gen 1 Type C to  
10/100/1000Mbps Ethernet Dongle



**G9999HT0038-003**  
Charger Cradle



**G9933-04**  
USB C to DisplayPort 1.2 Dongle  
Compliant with DisplayPort 1.2

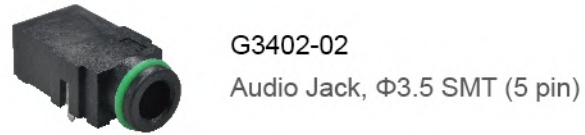


**AB9999-0100-008-00**  
Charger Cradle

# IPC Solution 工業電腦解決方案



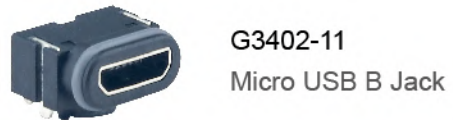
## Waterproof Series



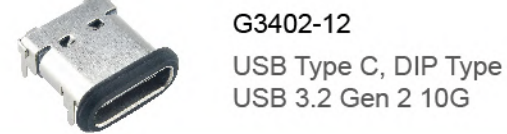
**G3402-02**  
Audio Jack,  $\Phi$ 3.5 SMT (5 pin)



**G3402-12**  
USB Type C, MID-Mount Type  
USB 3.2 Gen 2 10G

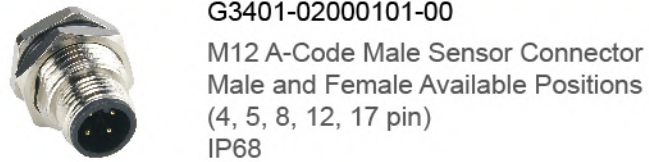


**G3402-11**  
Micro USB B Jack



**G3402-12**  
USB Type C, DIP Type  
USB 3.2 Gen 2 10G

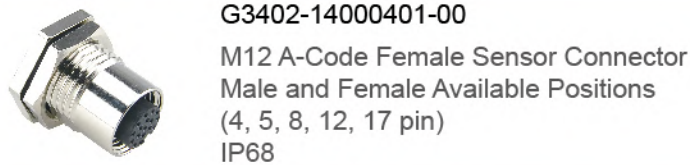
## M12 Connector



**G3401-02000101-00**  
M12 A-Code Male Sensor Connector  
Male and Female Available Positions  
(4, 5, 8, 12, 17 pin)  
IP68



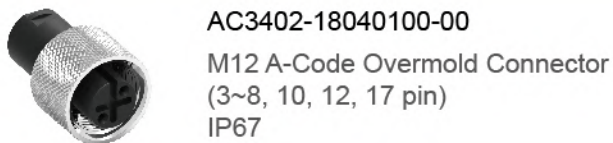
**G3401-02001111-00**  
M12 D-Code Male  
Sensor Connector (4 pin)  
IP68



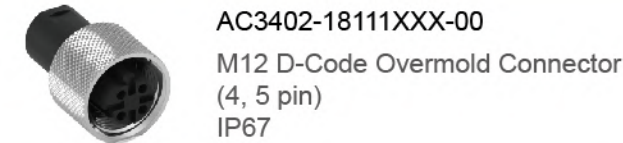
**G3402-14000401-00**  
M12 A-Code Female Sensor Connector  
Male and Female Available Positions  
(4, 5, 8, 12, 17 pin)  
IP68



**G3402-13000001-00**  
M12 X-Code Female  
Sensor Connector (8 pin)  
IP68



**AC3402-18040100-00**  
M12 A-Code Overmold Connector  
(3~8, 10, 12, 17 pin)  
IP67



**AC3402-18111XXX-00**  
M12 D-Code Overmold Connector  
(4, 5 pin)  
IP67

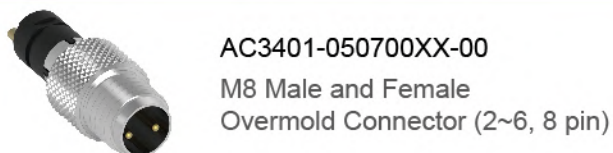
## M8 Connector



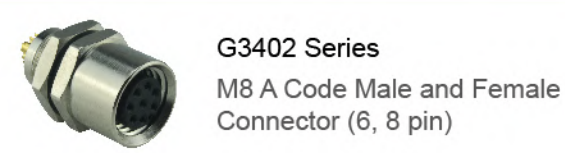
**AC3401-050000XX-00**  
M8 Male and Female  
Sensor Connector (6, 8 pin)



**AC3402-16400000-00**  
M8 R/A Female  
Sensor Connector (2~4 pin)

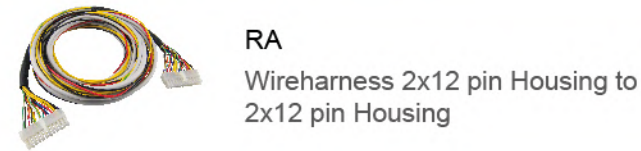


**AC3401-050700XX-00**  
M8 Male and Female  
Overmold Connector (2~6, 8 pin)



**G3402 Series**  
M8 A Code Male and Female  
Connector (6, 8 pin)

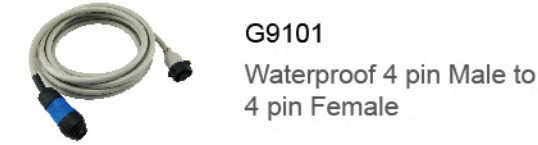
## Customized Cable



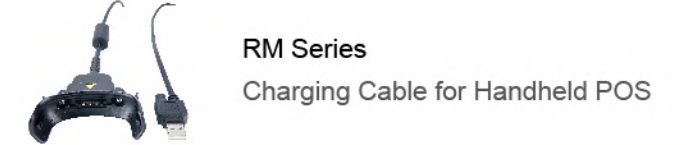
**RA**  
Wireharness 2x12 pin Housing to  
2x12 pin Housing



**G9600**  
Waterproof 4 pin Plug to  
6 pin Plug Cable



**G9101**  
Waterproof 4 pin Male to  
4 pin Female



**RM Series**  
Charging Cable for Handheld POS



**G9600**  
Wireharness 20 pin Housing to  
20 pin Housing



**G9900**  
USB 2.0 to RJ 45 Converter

## USB Type C Cable



**G9932**  
USB 3.1 Type C to C  
Full-Featured Cable



**G9931**  
USB 2.0 Type C to C

## DisplayPort Series

### DisplayPort Cable

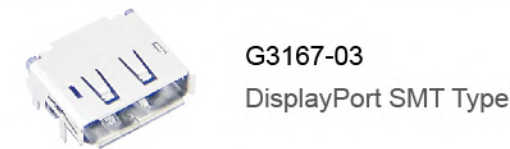


**G9857**  
DisplayPort to  
DisplayPort Cable

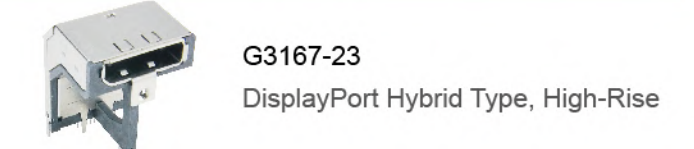


**G9858**  
Mini DisplayPort to  
DisplayPort Cable

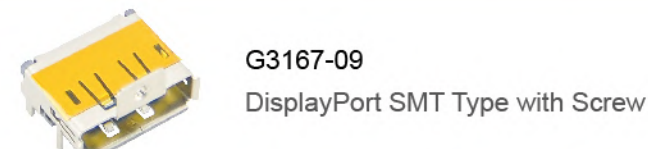
### DisplayPort 1.4/2.0



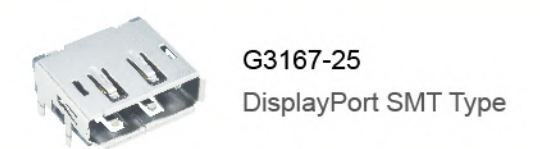
**G3167-03**  
DisplayPort SMT Type



**G3167-23**  
DisplayPort Hybrid Type, High-Rise

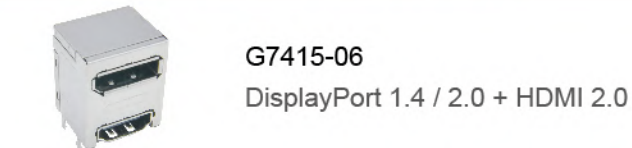


**G3167-09**  
DisplayPort SMT Type with Screw

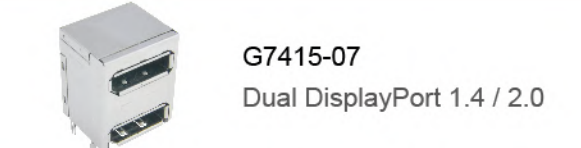


**G3167-25**  
DisplayPort SMT Type

### DisplayPort 1.4/2.0 Combo

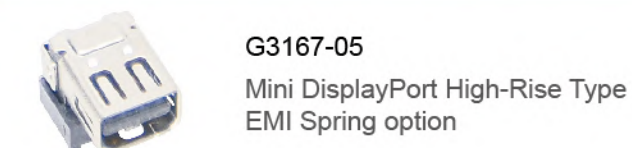


**G7415-06**  
DisplayPort 1.4 / 2.0 + HDMI 2.0

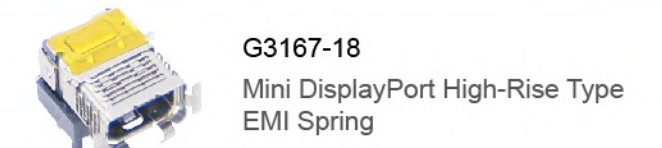


**G7415-07**  
Dual DisplayPort 1.4 / 2.0

### Mini DisplayPort 1.4/2.0



**G3167-05**  
Mini DisplayPort High-Rise Type  
EMI Spring option



**G3167-18**  
Mini DisplayPort High-Rise Type  
EMI Spring



## HDMI Series

### HDMI Cable



G9856E024-070  
High Speed Active Cable  
(HDMI 1.4 - 4K 30Hz)



AB9856-0023-014-00  
HDMI 2.1 Ultra High Speed  
HDMI Cable

### HDMI 2.1/2.0



G3168-76000001-H0  
SMT Type, without Screw Hole  
(Approved Category 3 Connectors)



G3168-75  
HDMI R/A High-Rise SMT Type  
Insert Molding



G3168-18/68  
HDMI R/A SMT Type  
Screw Hole (option)  
Copper Shell / Stainless Steel Shell



AC3168-03  
HDMI 2.1 MID-Mount Type  
(Approved Category 3 Connectors)



AC3168-02  
HDMI 2.1 R/A SMT Type,  
Spring Tab & Screw Hole option  
(Approved Category 3 Connectors)



AC3168-06  
HDMI 2.1 Upright Type,  
Screw Hole option  
(Approved Category 3 Connectors)

### HDMI 2.0 Combo



G7415-03  
HDMI 2.0 + HDMI 2.0  
DIP & SMT Hybrid Type



G3168-61  
USB 2.0 + HDMI 2.0  
DIP Type

## USB Series

### USB 3.2 (3.1)



G3509-01  
USB 3.0 A Jack DIP Type



G3509-37  
USB 3.0 A Jack Vertical DIP Type



G3509-08  
USB 3.0 A Jack Upright DIP Type



G3509-70  
USB 3.0 A Jack Dual Port DIP Type

### Type C 3.2 (3.1)



G3518-06  
USB C Hybrid High-Rise Type,  
CH 4.5



G3518-14  
USB C Hybrid Type with Screw option,  
CH 3.4



G3518-08  
USB C Hybrid Type,  
CH 2.75



G3518-15  
USB C Vertical Type

## RJ Series

### RJ 45



G7412-01  
RJ 45, Single Port, LED option,  
Spring option



G7410-01  
RJ 45, 1x2 Port, Transformer



G7412-11  
RJ 45, Single Port, LED option,  
Spring option



G7410-13  
RJ 45, 1x4 Port, Transformer



G7412-63  
RJ 45, Single Port, LED, Transformer



G7410-65  
RJ 45, 2x1 Port, LED, Transformer

### RJ 45 Combo



G7412-53  
RJ 45 + HDMI, Transformer,  
LED, Spring



G7412-56  
RJ 45 + USB 3.0, Transformer option,  
LED option, Spring

## Mirco SD Card Series



G6174-50  
Micro SD Card Push Type



G6174-55  
Micro SD Flip-up Type

## SIM Card Series



G6178-55  
SIM Card Socket 6 pin  
Height 2.0mm SMT Type



AC6178-66  
SIM Card Socket 8 pin  
Height 2.5mm SMT Type

## Power Series



AC2211-07  
PCIe 5.0 Power 2x6 Power pin,  
Per pin 9.2A  
Tape & Reel



AC2211-09  
PCIe 5.0 Power 2x6 Power pin,  
Per pin 9.2A  
Tray



AC2211-08  
PCIe 5.0 Power 2x6 Power pin,  
Per pin 9.2A  
Tape & Reel



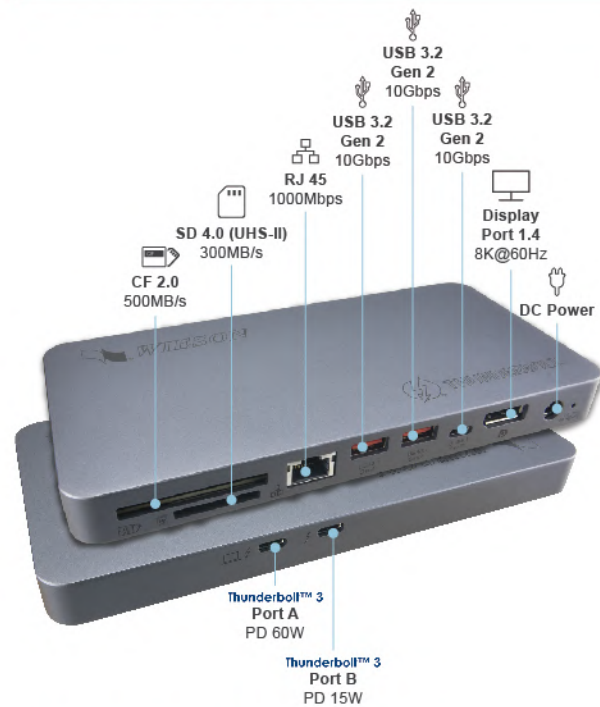
AB9003-3103  
PCIe 5.0 12 pin + 4 pin 3.0mm Pitch  
PVC Jacket Color: Black  
16AWG + 28AWG

# Electronic Products Solution

## 電子產品解決方案



### Thunderbolt 3











Specification	
Model Name	G9999-0000-001-00
Power Input	100V - 240V, 50/60Hz
Power Adapter Watts	135W
Product Dimension	190x95x17mm
Product Weight	300g
Operating Temperature	0°C to 60°C
Display Port 1.4	Support 8K 60Hz or Dual 4K Video output
SD 4.0	300Mbps
CF 2.0	500Mbps
USB 3.2 Gen 2	10Gbps (7.5W Power supply)
Thunderbolt Daisy-Chain	Allows 6 devices in series

### Product Description

40Gb/s of data traffic can be obtained by connecting Thunderbolt 3 dock to the Thunderbolt 3 interface of computer. Thunderbolt 3 Docking can provide one ultra high definition video display (8K@60Hz) or two high definition video signal transmission(4K@60Hz) at same time, we also provide different I/O port for data transmission (USB A、USB C、SD Card、CF Card、RJ 45), compatible with USB 4 / Thunderbolt 3 laptops and PC computer, supports the computer's picture, video, sound and other content on the TV, projector and other display devices.

- Thunderbolt 3 Port A (PD 60W)
- Thunderbolt 3 Port B (PD 15W)
- DisplayPort : Support DisplayPort 1.4 8K@60Hz resolution
- USB 3.2 Gen 2 Type A x2 : Support data transmission up to 10Gb/s
- USB 3.2 Gen 2 10G Type C x1 : Support data transmission up to 10Gb/s
- LAN connect : Support 10/100/1000Mbps
- SD Card Reader : SD 4.0 (UHS-II) Support data transmission up to 300MB/s
- CF Card Reader : CFast 2.0 Support data transmission up to 500 MB/s

### USB Type-C Series

- |   |   |   |  |
|---|---|---|--|
|  | <b>AB8248-0073-001-00</b><br>USB Type C Adaptor<br>Compliant with USB 3.0 / USB 2.0<br>USB 3.1 Gen 2 Type C/M to<br>USB 3.1 Gen 1 A/F |  | <b>G9933-03</b><br>USB 3.1 Gen 1 Type C to<br>USB 3.1 Gen 1 x3 + USB 2.0 x1 HUB<br>With USB PD<br>Supports Super-Speed (5GHz) &<br>High-Speed (480MHz) |
|  | <b>G9933-00</b><br>USB 3.1 Gen 1 Type C to<br>10/100/1000Mbps Ethernet Dongle<br>Compliant with USB 3.0 / USB 2.0                     |  | <b>G9933-04</b><br>USB C to DisplayPort 1.2 Dongle<br>Compliant with DisplayPort 1.2<br>Max Resolution: 4K2K @60Hz                                     |
|  | <b>G9933-01</b><br>USB 2.0 Type C to 10/100Mbps<br>Ethernet Dongle<br>Compliant with USB 2.0  |  | <b>G9933-06</b><br>USB C to VGA Dongle<br>Support VESA and CEA Timing<br>Standards Up to UXGA and<br>1920x1200@60Hz                                    |
|  | <b>G9933-02</b><br>USB 3.1 Gen 1 Type C to USB 3.1 Gen 1<br>HUB With USB PD Support<br>Compliant with USB 3.0 / USB 2.0               |  | <b>G9933-08</b><br>USB C to USB3.1 Gen 1 +<br>VGA Dongle With PD<br>Compliant with USB 3.0 / USB 2.0   |

### USB Series

- |   |   |   |  |
|---|---|---|--|
|  | <b>G9900</b><br>USB 2.0 to RJ 45 Converter<br>Support 10/100Mbps Ethernet |  | <b>RM Series</b><br>Charging Cable for Handheld POS<br>Customization |
|---|---|---|--|

### Customized Series

- |   |   |   |  |
|---|---|---|--|
|  | <b>G9999HT0038-001</b><br>USB 2.0 Type C Hub with Charger<br>Function Support<br>• USB A 2.0 x4<br>• USB B 2.0 x1<br>• RJ 45 & RJ 11 x1<br>• DC Port x1 |  | <b>G9999HT0038-012</b><br>Environment Sensor<br>Sending temperature, humidity<br>information directly to smartphone<br>via Bluetooth 2.0                                   |
|  | <b>G9999HT0038-006</b><br>Charger cradle<br>Power<br>• Input :12V/3.3A DC in<br>• Output :12V/3A by pogo pin  |  | <b>G9999HT0038-014</b><br>Drivers ID<br>Carried by driver, records both drive<br>behavior and location trace;<br>automatically sync via Bluetooth                          |
|  | <b>G9999HT0038-003</b><br>Charger cradle<br>Power<br>• Input :12V/3.3A DC in<br>• Output :12V/3A by pogo pin  |  | <b>G9999HT0038-011</b><br>Door Sensor<br>Door Monitor is a wireless sensor<br>which detects when door open and<br>close; enable to react quickly to<br>unexpected openings |

# GPU & PC Solution

## 圖形處理器 & 個人電腦解決方案

### Enhanced DisplayPort Series

- DP40 Cable Supports UHBR10 Data Rate
- DP80 Cable Supports UHBR20 and UHBR13.5 Data Rates
- Follow the standard of VESA Enhanced DP 2.1 Spec.
- Compatible with early version DP 1.4/2.0
- Cable ID for data detection
- Certification by VESA Association

### Full Size DisplayPort Cable / Connector (DP40)



AB9857-30402020-00



AC3167-02001301-HH



AC3167-07001101-HH

#### Part Series List

Wieson Cable P/N	Length	Product Name	Data Rate	Cable Structure
AB9857-30402020-00	2m	Enhanced Full Size DP Cable, DP40	UHBR10	30AWG, Pairs Wire
AC3167-02001301-HH		Enhanced Full Size DP Connector, DP40		
AC3167-07001101-HH		Enhanced Full Size DP Connector, Screw Hole Type, DP40		

### mini DisplayPort Cable / Connector (DP80)



AB9858-40402010-00



AB9858-30402020-00



AC3167-04000001-H0



AC3167-05100001-H0

#### Part Series List

Wieson Cable P/N	Length	Product Name	Data Rate	Cable Structure
AB9858-40402010-00	0.8m	Enhanced mDP Cable, DP80	up to UHBR20	30AWG, Pairs Wire
AB9858-30402020-00	2m	Enhanced mDP Cable, DP40	UHBR10	30AWG, Pairs Wire
AC3167-04000001-H0		Enhanced mDP Connector DP80/DP40		
AC3167-05100001-H0		Enhanced mDP Connector Low Profile Type with Screw Hole Flange DP80/DP40		



### DisplayPort Series

#### DisplayPort 1.4/2.0



G3167-03  
DisplayPort SMT Type



G3167-21  
DisplayPort SMT Type with Spring



G3167-04  
DisplayPort SMT Type with Gasket



G3167-23  
DisplayPort Hybrid Type, High-Rise



G3167-09  
DisplayPort SMT Type with Screw, Stainless Steel option



G3167-20  
DisplayPort SMT Type with Gasket

#### Mini DisplayPort 1.4/2.0



G3167-05  
Mini DisplayPort High-Rise Type EMI Spring option



G3167-15  
Mini DisplayPort High-Rise Type EMI Spring option

### HDMI Series

#### HDMI 2.1 48G



G3168-76  
HDMI 2.1 R/A SMT Type, Screw Hole option (Approved Category 3 Connectors)



AC3168-02  
HDMI 2.1 R/A SMT Type, Spring Tab & Screw Hole option (Approved Category 3 Connectors)



AC3168-03  
HDMI 2.1 Mid-Mount Type (Approved Category 3 Connectors)



AC3168-06  
HDMI 2.1 Upright Type, Screw Hole option (Approved Category 3 Connectors)



AC7415-04  
DisplayPort 2.0 + HDMI 2.1 DIP Type

## HDMI 1.4/2.0



**G3168-05**  
Mini HDMI R/A SMT Type



**G3168-51**  
Micro HDMI R/A SMT Type  
Shell DIP Structure Direction  
option



**G7415-03**  
HDMI + HDMI  
DIP & SMT Hybrid Type



**G3168-61**  
USB 2.0 + HDMI  
DIP Type

## USB Series

### USB 4 Gen 3 40G



**AC3518-01**  
USB 4 Type C Gen 3 40G,  
Dual row SMT with Rugged Double shell



**AC3518-02**  
USB 4 Type C Gen 3 40G,  
Dual row SMT Type

### Type C 3.2 (3.1)



**G3518-03**  
USB C Hybrid Type, CH 1.6



**G3518-12**  
USB C Hybrid MID-Mount Type



**G3518-06**  
USB C Hybrid High-Rise Type,  
CH 4.5



**G3518-14**  
USB C Hybrid Type with  
Screw option, CH 3.4



**G3518-08**  
USB C Hybrid Type, CH 2.75



**G3518-15**  
USB C Vertical Type

### USB 3.2 (3.1)



**G3509-01**  
USB 3.0 A Jack DIP Type



**G3509-37**  
USB 3.0 A Jack Vertical DIP Type



**G3509-08**  
USB 3.0 A Jack Upright DIP Type



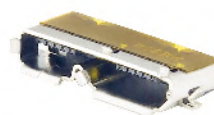
**G3509-41**  
USB 3.0 B Jack DIP Type



**G3509-22**  
USB 3.0 A Jack SMT Type



**G3509-70**  
USB 3.0 A Jack Dual Port DIP Type



**G3515-50**  
Micro USB B Jack SMT Type

## RJ Series

### RJ 45



**G7412-01**  
RJ 45, Single Port, LED option,  
Spring option



**G7410-65**  
RJ 45, 2x1 Port, LED, Transformer



**G7412-11**  
RJ 45, Single Port, LED option,  
Spring option



**G7412-60**  
RJ 45 Vertical Type, Single Port,  
Transformer, LED option



**G7412-63**  
RJ 45, Single Port, LED, Transformer

### RJ 45 Combo



**G7412-52**  
RJ 45 + USB 2.0, Transformer,  
LED, Spring



**G7412-56**  
RJ 45 + USB 3.0, Transformer option,  
LED option, Spring



**G7412-53**  
RJ 45 + HDMI, Transformer,  
LED, Spring

### RJ 10G



**G7416-01**  
RJ 45, Single Port, LED,  
Transformer

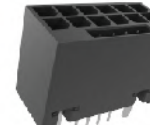


**G7416-05**  
RJ 45, Single Port, LED,  
Transformer

## Power Series



**AC2211-07**  
PCIe 5.0 Power 2x6 Power pin,  
Per pin 9.2A  
Tape & Reel



**AC2211-09**  
PCIe 5.0 Power 2x6 Power pin,  
Per pin 9.2A  
Tray



**AC2211-08**  
PCIe 5.0 Power 2x6 Power pin,  
Per pin 9.2A  
Tape & Reel



**AB9003-3103**  
PCIe 5.0 12 pin + 4 pin 3.0mm Pitch  
PVC Jacket Color: Black  
16AWG + 28AWG

# Networking / PC / Gaming Solution

## 網路通訊 / 電腦 / 電競無線解決方案



### WiFi External Antenna



**ARY121**  
Frequency Range 2400-2500MHz,  
5150-7125MHz



**ARY121**  
Frequency Range 2400-2500MHz,  
5150-7125MHz



**ARY121**  
Frequency Range 2400-2500MHz,  
5150-7125MHz

### 4G+5G External Antenna



**ARY118**  
Frequency Range 617-960 /  
1710-2690 / 3200-6000MHz



**ARY118**  
Frequency Range 617-960 /  
1710-2690 / 3200-6000MHz



**ARY118**  
Frequency Range 617-960 /  
1710-2690 / 3200-6000MHz

### LTE External Antenna



**ARY115**  
Frequency Range 698-960 /  
1710-2170MHz  
Connector: SMA  
Impedance: 50Ω  
Radiation: Omni  
V.S.W.R: 3

### 5G External Antenna



**ARY118**  
Frequency Range  
3300-3800MHz  
Connector: SMA  
Impedance: 50Ω  
Radiation: Omni  
V.S.W.R: 2:1

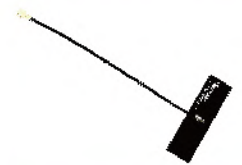
### WiFi Internal Antenna

#### WiFi 6E Internal Antenna



**ARY196**  
Frequency Range 2400~2500 /  
5150~7125MHz  
Material: PCB  
V.S.W.R: 2:1  
Impedance: 50Ω  
Radiation: Omni

#### WiFi Internal Antenna



**ARY196**  
Frequency Range 2400~2500 /  
5150~5850MHz  
Material: FPC  
V.S.W.R: 2:1  
Impedance: 50Ω  
Radiation: Omni

#### Tri-Band Antenna



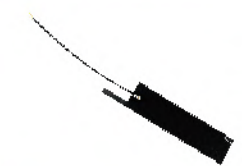
**ARY136**  
Frequency Range 2400~2500 /  
5150~5850 / 5900~7125MHz  
Material: Metal  
V.S.W.R: 2:1  
Impedance: 50Ω  
Radiation: Omni

### 4G+5G Internal Antenna



**ARY196**  
Frequency Range 617-960 /  
1710-2690 / 3200-6000MHz  
Material: PCB  
V.S.W.R: 3  
Impedance: 50Ω  
Radiation: Omni

### LORA Internal Antenna



**ARY196**  
Frequency Range  
860-928MHz  
Material: FPC  
V.S.W.R: 2:1  
Impedance: 50Ω  
Radiation: Omni

### MLI Antenna

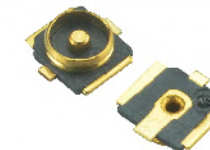


**ARY128**  
Frequency Range 2400~2500 /  
5150~5850MHz  
Dimension:  
3.2x1.6x0.8mm  
Impedance: 50Ω  
Polarization: Linear

### MHF Connector



**AR7169**  
MHF RECEPTACLE 3Pad / 4Pad  
Frequency Range: DC-6GHz



**AR7169**  
MHF I/IV RECEPTACLE  
Frequency Range: DC-6GHz

## MMCX Connector



- AR7134**
- MMCX Jack STR For PCB EDGE Mount
  - Frequency Range: 0-6GHz



- AR7134**
- MMCX Jack R/A For PCB Type
  - Frequency Range: 0-6GHz

## MCX Connector



- AR7129**
- MCX Jack EDGE Card PCB
  - Frequency Range: 0-6GHz



- AR7129**
- MCX Jack R/A For PCB Mount (75Ω)
  - Frequency Range: 0-6GHz



- AR7129**
- MCX Jack R/A For PCB Mount (50Ω)
  - Frequency Range: 0-6GHz

## SMA Connector



- AR7109**
- SMA Jack R/A For PCB Mount
  - Frequency Range: 0-8GHz



- AR7109**
- SMA Jack STR. For PCB Mount
  - Frequency Range: 0-8GHz

## RF Cable



- AR9851**
- I-Pex (I/IV) MHF to I-Pex MHF (I/IV)

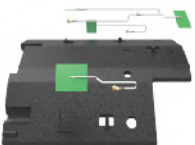


- AR9851**
- MMCX R/A Plug to Open



- AR9851**
- SMA Jack to I-Pex (I/IV) Plug

## Holder Antenna (Customized)

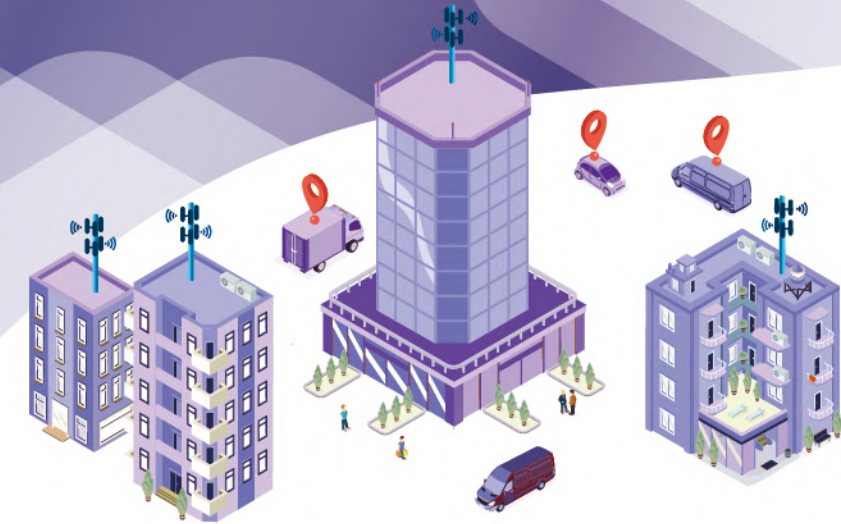


- ARY197 (Customized)**
- Frequency Range 824-960MHz, 1710-2170MHz



- ARY197 (Customized)**
- Frequency Range 2400-2485MHz, 5150-5850MHz

## Edge Server / Small Cell 邊緣運算 / 小型基地台無線解決方案



## RF Cable



- AR9853**
- Low Loss Cable - LMR100
  - SMA / N-Type Connector



- AR9853**
- Low Loss Cable - LMR400
  - N-Type Connector



- AR9853**
- Low Loss Cable - LMR200
  - SMA / N-Type Connector



- AR9853**
- Low Loss Cable - LMR600
  - N-Type Connector

## Outdoor Antenna



- ARY121**
- 2400~2500MHz, 5150~7125MHz
  - Glass Fiber WiFi Tri-Band



- ARY197**
- 698~960MHz, 1710~2700MHz
  - Dimension: 290x170x50mm



- ARY118**
- 617~960MHz, 1452~1610MHz, 1710~2690MHz, 3300~6000MHz
  - Glass Fiber 4G+5G



- ARY197**
- 698~960MHz, 1710~2700MHz
  - Dimension: 290x170x50mm

## RF Connector



- AR7139**
- N-Type to open
  - Typical Temperature Range: -65°C to +165°C
  - Impedance: 50Ω
  - Frequency Range: DC-11GHz

# Automotive Electronics Product Solution 汽車電子產品解決方案



**Automotive Data Comm./Charger Solution**  
車載資料傳輸/充電解決方案

**Automotive Wireharness Solution**  
車用線束解決方案

**Automotive Connector Solution**  
車用連接器解決方案

**Automotive Antenna Solution**  
車載天線解決方案

**ADAS Interconnect Solution**  
ADAS周邊感測連接解決方案

**ECU PCBA EMS**  
車載電控模組PCBA EMS

## Automotive Data Comm. / Charger Solution 車載資料傳輸/充電解決方案

1/2 Port USB Charger 單/雙座USB充電座  
1/2 Port USB Quick Charger 單/雙座 USB 快充

1 Port Waterproof USB Charger 單座防水USB充電座  
Automotive Wireless Charger 車載無線充電模組

## Automotive Wireharness Solution 車用線束解決方案

USB Harness USB線束  
HSD Harness HSD線束

BEV/PHEV Harness 新能源車線束  
Waterproof Harness 防水線束

LVDS Harness LVDS線束  
Customized Harness 客製化線束

## Automotive Connector Solution 車用連接器解決方案

Customized Connector 客制化連接器  
Waterproof Connector 防水連接器

Fakra Connector Fakra連接器  
BEV/PHEV Connector 新能源車連接器

## Automotive Antenna Solution 車載天線解決方案

4G/5G Shark-Fin Antenna 4G/5G 鯊魚鰭天線  
Rod Antenna 杆式天線

4G/5G Antenna Box 4G/5G 天線盒  
Antenna Amplifier 玻璃天線放大器

## ADAS Interconnect Solution ADAS周邊感測連接解決方案

Automotive Ethernet Connector/Harness 車載乙太網連接器/線束  
Camera Waterproof Harness 攝像頭防水線束

Fakra Connector/Harness Fakra連接器/線束  
Customized Radar Waterproof Connector/Harness 客製化雷達防水連接器/線束

## ECU PCBA EMS 車載電控模組 PCBA EMS

T-Box/DVR/ECU PCBA 天線/GPS/攝像頭 PCBA  
T-Box/DVR/ECU PCBA 天線/GPS/攝像頭 PCBA

Electronic Ignition Coil PCBA 電子點火線圈 PCBA  
Others ECU PCBA 電控模組PCBA

# Core Technology Capability 核心技術能力

## High Precision Press Capability 精密沖壓技術能力



01 Hardware Mould 3D Design (3D Simulated Forming)  
五金模具3D設計(可3D模擬成型)

02 Precision Slow-Walking Wire Processing (Machining Accuracy up to 2u)  
精密慢走絲加工(加工精度高達2u)

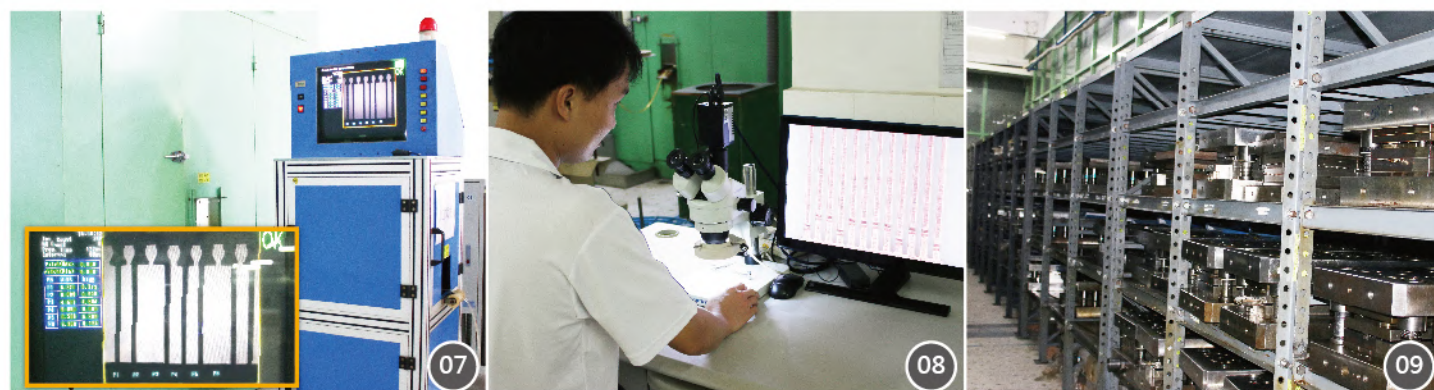
03 Precision Hardware Mould (Stamping Material Thickness 0.1mm~1.6mm)  
精密五金模具(沖壓料厚0.1mm~1.6mm)



04 High Speed Stamping Workshop  
高速沖壓車間

05 Large Tonnage Stamping Workshop  
大噸位沖壓車間

06 High Speed Presses (Speed up to 1300 Times Per Minute)  
高速沖床(衝速高達1300次/分鐘)



07 Fully Automatic CCD Measurement Size (Full-Scale Measurement)  
全自動CCD檢測尺寸(可全尺寸測量)

08 High Definition Trinocular Microscope (Magnification up to 45 Times)  
高清晰三目顯微鏡(放大倍數高達45倍)

09 Hardware Mould Warehouse (More than 400 Sets of Hardware Moulds)  
五金模具倉庫(五金模具達400餘套)

## High Precision Plastic Injection Capability 精密塑膠技術能力



01 CNC grinding machines  
CNC 精密磨床 0.001毫米

02 CNC electric discharge Machines roughness concentration 0.1Ra  
鏡面放電機 粗糙度0.1Ra

03 Central Feeding System  
中央供料系統



04 Injection Line  
注塑車間

05 Auto Insert Molding Line  
全自動埋入射出車間

06 High-speed Auto Injection Line  
高速射出車間



07 Injection Molding Machine  
油壓注塑機

08 High-speed Injector (FANUC)  
FANUC 高速射出機

09 MOLD monitoring protector  
模具監視器



10 Dimension and Visual Inspector  
檢驗設備

11 Injection products pitch 0.4mm MIN / products thinness 0.15mm MIN  
注塑產品PIN 距0.4mm / 膠位內壁厚0.15mm



# Core Technology Capability

## 核心技術能力

### Plastic Injection Product Capabilities

#### 塑膠射出產品能力介紹

#### Germany GOM ATOS 3D Scanner Technology

##### 德國 GOM ATOS 3D 掃描逆向工程技術

GOM ATOS 3D scanner are able to convert the complex surface into CAD drawing in 30 mins. Molds parts like sliders, electrodes dimensions can be 100% verify before assembly. Trial Injection parts not only points but surface can be measured and found the problem in early stage.

GOM ATOS 3D 掃描可以將複雜的物件在30分鐘內轉換成 3D圖檔。量測物件包含電極、滑塊、模仁等100%量測後再組裝。量測從原本2D，變成整個表面都可被量測，模具問題點在試模前可被查驗，試模產品的變形度也可以被檢驗。

**Tools average trail time 3.5 -> 2.8 FAI accuracy increase 10%**  
**平均試模次數 3.5 -> 2.8 FAI 一次性合格率增加10%**



**Model**  
GOM ATOS Core

**Tolerance**  
+/- 0.01mm

**Process time**  
30mins-60mins

**Applied object**  
electrodes, tools core/cavity, sliders, complex injected parts

**Model**  
GOM ATOS Core

**掃描公差**  
+/- 0.01mm

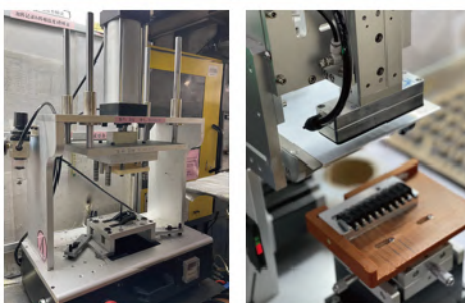
**掃描時間**  
30mins-60mins

**量測物件**  
電極、模仁、滑塊、產品FAI

### Advance Automation bulid-up

#### 全自動注塑成型技術

Insert metal molding + auto packing  
 鐵件埋入成型 + 自動吸塑擺盤



- Required high quality tooling
- Mature automation equipment
- Two advance auto system in production, Three more in May

**Cutting Jig**  
Cutting jig for gates implemented over 30% of production tools

**Automatic film assembly**  
Machine replace hand assembly one by one

- 需要高精度模具
- 成熟穩定自動化設備
- 完全取消作業人力

**自動切水口治具**  
涵蓋30%的生產模具導入自動切水口治具

**自動貼膜設備**  
快速隨線貼膜，減少人力加工

### Plastic Injection Product Capabilities

#### 塑膠射出產品能力介紹

#### Tooling Factory

##### 模具廠概況



Tooling floor shop



Wire cutting



EDM



CNC

### Production capacity and equipment

#### 生產能力及設備

#### Tooling capacity

- Average annual 400 tooling
- Max 60 tooling a month
- High-end Japan precise machineries
- Engineers, 25. Technicians 50

#### Molding capacity

- Total 110 injection machines
- Size 50T-1000T include 2k injection
- Under 300T all Japan precise electric injection machines
- 50T-150T injection machines -> 65  
 Include 2020/2021 brand new Franc 100t/150t ->22
- Automation all equipment 5 axis robot able to insert molding without operation involved

#### Equipment

- CNC/EDM/Wire-cut 21 set
- Injection Machines 66 set

#### 塑膠模具廠產能

- 每年平均製造400套以上塑膠模具
- 最高月產能可達70套
- 高精度日本進口加工機、牧野、沙迪克、發那科等
- 模具設計+工程25人 模具廠共80人

#### 注塑成型產能

- 注塑廠共計110台
- 機台50T-1000T 與17台雙色機
- 300T 以下全為日本進口電動機
- 小尺寸機台50T-250T -> 65台  
 2019年起採購進口30台發那科Fanuc全新機
- 全數注塑機配置機械手輔助生產

#### 精密機器設備

- CNC/EDM/Wire-cut 21台
- Injection Machines 66台



# Core Technology Capability

## 核心技術能力

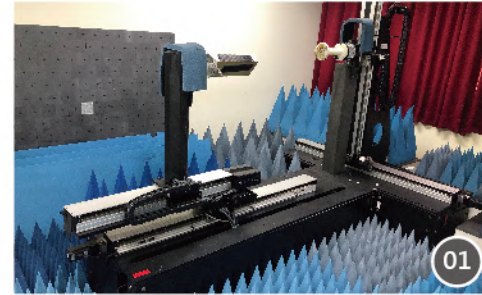
### Antenna Design Technology Capability

#### 無線天線技術能力

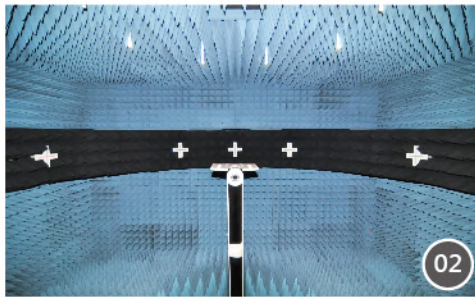


**Owned 44 patents**  
44 項天線專利技術

- 5 Invention patents  
5 項發明型專利
- 39 Utility model patents  
39 項新型專利



5G mm wave Chamber  
毫米波無反射實驗室



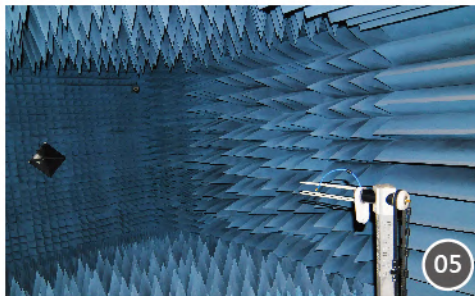
LTE MIMO OTA  
4G多輸出多輸入全電波暗室



EM-Near Field Chamber  
近場電磁量測實驗室



WiFi Throughput Chamber  
無線封包輸送量實驗室



ETS-Lindgren 3D Far Field Chamber  
ETS-3D無反射實驗室



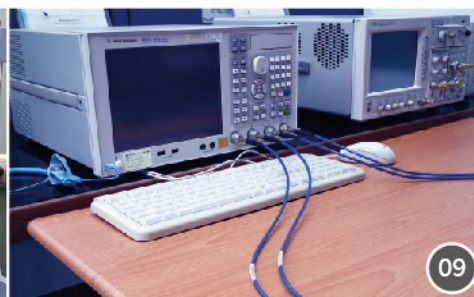
3D Printer  
3D印表機



Far Field Chamber  
3D無反射實驗室



Spectrum Analyzer  
頻譜分析儀



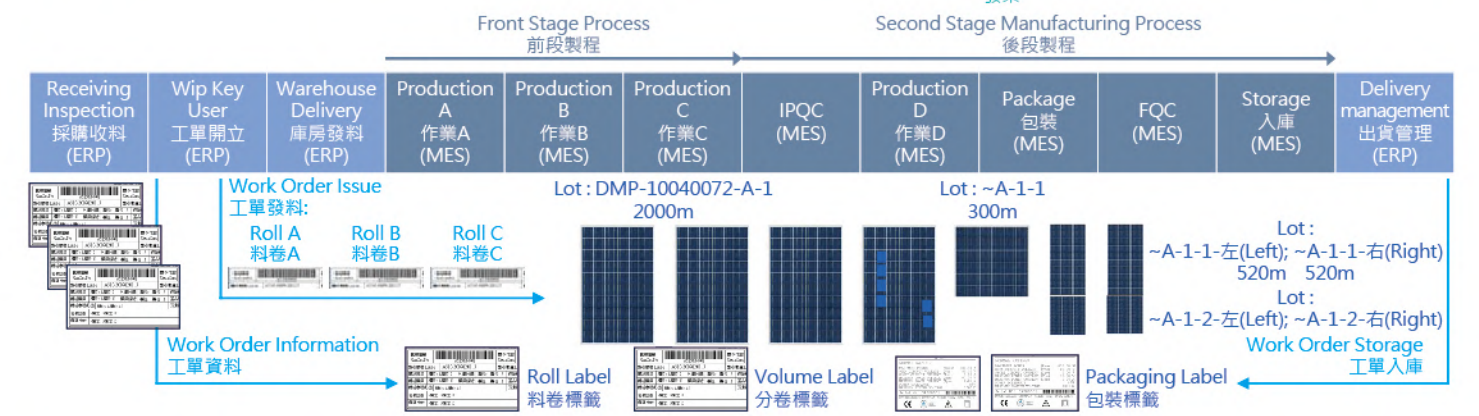
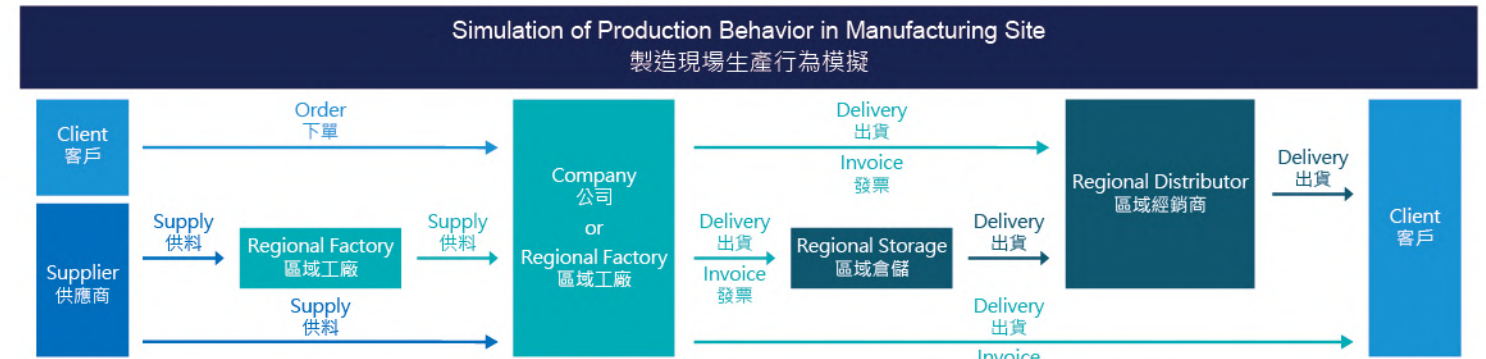
Network Analyzer  
網路分析儀



Shielding Box  
隔離箱

### MES System Application

#### MES系統應用



### Real-Time Statistical Process Control

內建統計制程管制模組(SPC)

- SPC management can directly become one of MES SPC管理可直接成為MES的產品之一環
- Can be set and according to SPC, Real time warning and process control 可設定並依據SPC檢測結果，即時進行示警與制程式控制管制

### Traceability and Error Prevention for Products

產品追溯及防錯

生產狀況實時監控

The system can self-check and correct errors 系統可自查糾錯

Error

# Core Technology Capability

## 核心技術能力

### Electronic Assembly Production Technology Ability

#### 電子總成生產技術能力



**SMT Automatic Production Line**  
min. production size: 50x50mm, max.: 350x400mm  
SMT自動生產線  
生產尺寸最小: 50x50mm, 最大: 350x400mm

**Fully Automatic Printing Machine(HLM400)**  
Resolution of engraving(repeatability): 2μm(±0.02mm)  
全自動光刻機(HLM400)  
刻印解析度(重複精度): 2μm(±0.02mm)

**Fully Automatic Printing Machine(ICON8)**  
Accuracy: 15μm  
全自動印刷機(ICON8)  
精度: 15μm



**Auto Solder Paste Thickness Machine(K8030-2)**  
Highly repetitive: ±2%  
全自動錫膏測厚機(K8030-2)  
高度重複性: ±2%

**Automatic Placement Machine(XPF - L)**  
Object components: 0402 ~ 45mm x 45mm  
全自動貼片機(XPF-L)  
物件元件: 0402 ~ 45mmx45mm

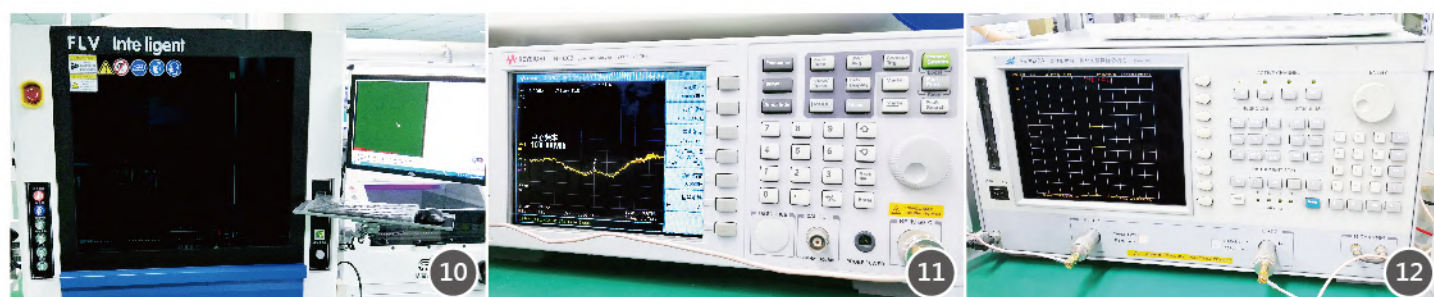
**Automatic AOI Test Machine(S500)**  
Camera resolution: 15um  
全自動AOI測試機(S500)  
相機解析度: 15um



**Lead-Free Nitrogen Reflow Soldering(JTR-1200)**  
Temp. control precision: ±1.0°C, can satisfy the patch, plug-in, spraying, etc  
無鉛氮氣回流焊(JTR-1200)  
溫度控制精度: ±1.0°C, 可滿足貼片、外掛程式、噴塗等工藝

**Automatic ICT Test Machine(TR5001E)**  
Programmable test frequency: 100Hz, 1kHz, 10kHz, 100kHz, 1MHz  
全自動ICT測試機(TR5001E)  
可編程測試頻率: 100Hz, 1kHz, 10kHz, 100kHz, 1MHz

**Automatic PCBA Separator Use left mill to coordinate down dust-collector, with a robotic for PCBA transportation**  
全自動銑刀式分板



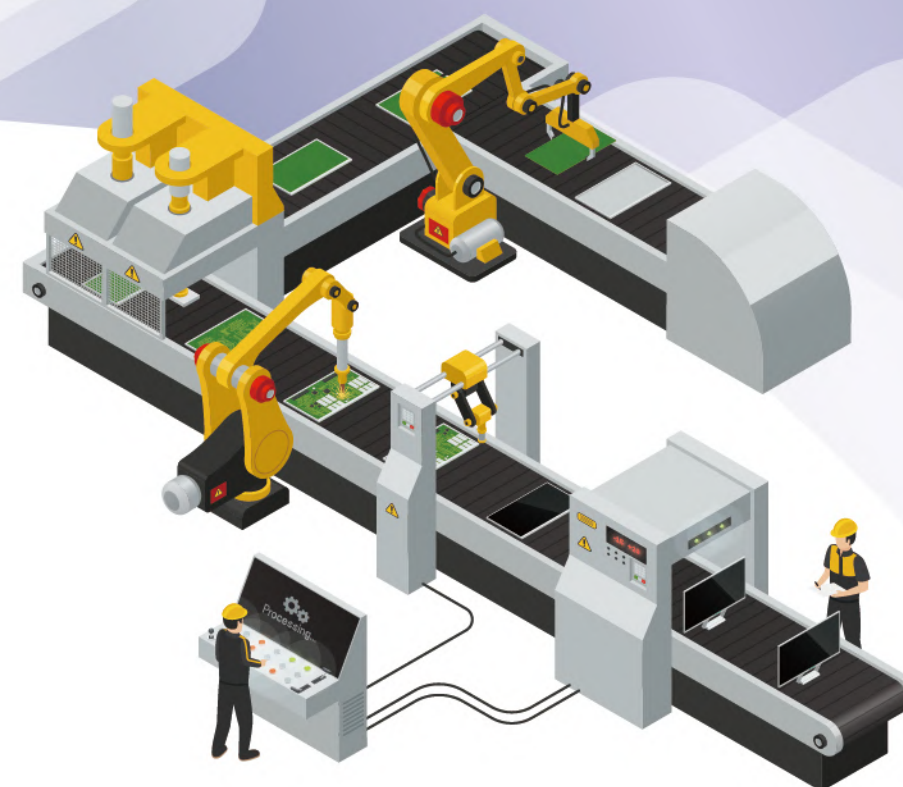
**Automatic Coating Machine**  
min. production size: 50x50mm, max.: 350x400mm  
全自動塗覆機  
生產尺寸最小: 50x50mm, 最大: 350x400mm

**A Spectrum Analyzer(9KHZ-3GHZ)**  
頻譜分析儀(9KHz-3GHz)

**Network Analyzer(30KHZ-3GHZ)**  
網路分析儀(30KHz-3GHz)

# Automation Technology Capability

## 自動化技術能力



### Wireless Components

#### 無線通訊

	<p><b>RF Coaxial Cable Automation Technology</b> RF 同軸線全自動技術</p> <p>This automation equipment can be cut &amp; stripped the coaxial wire then CCD-detected, electrically measured. And automatic assemble MHF Conn to coaxial cable.</p> <p>透過此自動化設備可將同軸線裁線、剝皮、打端子、CCD檢測、電測、沾錫全自動組裝同軸線和MHF端子。</p>
	<p><b>RF Welding and Adhesive Automatic Technology</b> RF 焊接貼背膠自動技術</p> <p>This automation equipment can be automatically complete the welding of the internal antenna PCB board and the coaxial cable, paste the adhesive on PCB.</p> <p>透過此自動化設備自動完成內置天線PCB板與同軸線的焊接及張貼背膠。</p>
	<p><b>Network Analysis Data Automatic Storage Technology</b> RF 電測自動數據儲存技術</p> <p>Through this device, the antenna Network analysis S11 measurement data can be quickly stored to facilitate the traceability of product defects.</p> <p>透過此設備可快速儲存天線電測數據，以利產品不良追溯。</p>
	<p><b>RF PCB Automatic Welding Technology</b> RF 天線PCB自動焊接技術</p> <p>Automatically complete the welding of the antenna PCB board and the coaxial cable.</p> <p>自動完成天線PCB板與同軸線的焊接。</p>

# Automation Technology Capability

## 自動化技術能力

### Interconnect Components

#### 連接零組件



#### Automation Terminal Insertion Technology 自動化插端子技術

Terminal bending, Terminal strip shearing, Terminal pre-assembly into housing, Terminal riveting into housing, Terminal foot shearing, SMT terminal process preparing.  
自動完成端子折彎，料帶切斷，端子預裝到膠芯，端子鉚壓到膠芯，切腳，折SMT等。



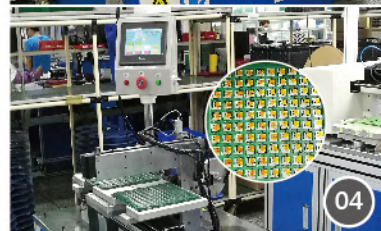
#### Automation Shell Assembly Technology 自動化組裝鐵殼技術

Shell pre-assembly, Shell pre-riveting, Open/Short test.  
自動完成摘鐵殼，預裝鐵殼，鉚壓鐵殼，電性測試，不良排除等。



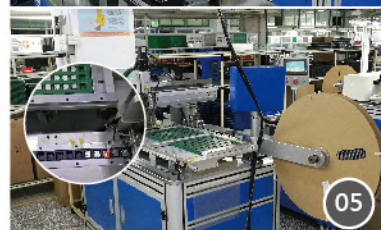
#### Automation CCD Inspection Technology 自動化CCD檢測技術

CCD terminal co-planarity inspection, Terminal and shell true-position inspection.  
自動完成CCD檢測共面度，正位度，位置度，鐵殼腳位置度，及各不良自動排除等，CCD檢測誤差 $\pm 0.015\text{mm}$ 。



#### Automation Mylar Pasting Technology 自動化貼麥拉技術

Automation mylar cutting and pasting.  
自動完成切麥拉，貼麥拉功能。



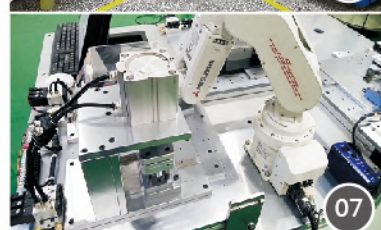
#### Automation Packaging Technology 自動化包裝技術

Automation packaging.  
自動完成包裝工序。



#### Automation Mass Production Technology 全自動化生產技術

Mass production capabilities combined with auto assembly, inspection and packaging functions in one production line.  
多台各功能之自動機銜接而成，實現自動組裝，檢測，包裝自動機，僅需1人操作機台即能完成，達到全自動化生產之要求。



#### Automation Robot Production Technology 機械手模組化生產技術

Using precision position with robot operation to complete all manufacturing procedures in mass production.  
通過機械手搬運產品載具，實現載具精準定位在各治具內，完成各種工序的生產加工技術。



#### Wire Automatic Technology 高頻高速線材全自動生產技術

Fully automatic wire pretreatment, welding and UV glue curing.  
全自動完全線材前處理、焊接與點UV膠固化。

### Automotive Electronics

#### 汽車電子



#### Harness Pre-processing Technology 汽車線束前處理技術

Automotive wire stripping, weaving, cutting, Copper foil taping.  
自動完成剝外被、理編織、切編織包銅鉚功能



#### Harness Automatic Sticking Tin Technology 汽車線束自動化粘錫技術

Automated cutting, peeling, sticking flux, sticking tin function.  
自動完成比剪、剝皮、粘助焊劑、粘錫功能



#### Harness Automatic Welding Technology 汽車線束自動焊接技術

Automatic welding  
自動焊接



#### Automatic Assembly Equipment for USB Charger 自動化生產線

Automatic Completion of assembly and charging test, output power test, labeling, and packaging process.  
自動完成組裝、手機充電測試、輸出功率測試、貼標籤、分裝真空盒



#### Automatic Testing Technology of PCBA Function PCBA 功能自動檢測技術

Automatic transporting, automatic testing, bad automatic rejection.  
自動搬運、自動測試、不良自動剔除功能



#### Automatic Processing Technology Inside and Outside the Round Line 圓線內外被自動處理技術

Automatic peeling of the outer quilt, inner core function, accuracy 0.5mm.  
自動剝外被，內芯線功能精度0.5mm



#### Electronic Wire Automatic end Pressure Sticking Tin Technology 電子線自動端壓粘錫技術

Automatic end pressure, twisting, peeling, sticking flux, sticking tin function. 5pcs can be completed at the same time with a precision deviation of 0.5mm.  
自動端壓，扭線，去皮，粘助焊劑，粘錫功能。一次可同時完成5pcs產品精度偏差0.5mm



#### Automatic SMT Production Line 自動化表面貼裝生產線

Automatic completion of PCB Laser print 2D code, Electronic Component mounter, AOI, ICT testing, router, dust removal and packaging processes.  
自動完成PCB刻碼、貼裝、測試、分板、除塵、分裝等所有制程



## Making The Perfect Connection

### Taiwan 台灣

#### **Wieson Technologies Co., LTD.**

聯陞科技股份有限公司

Address : 15F, No.237, Sec.1, Datong Rd., Xizhi Dist., New Taipei City 221006, Taiwan

221006 台灣新北市汐止區大同路一段237號15樓

Phone : 886-2-2647-1896

Fax : 886-2-2648-7388

E-mail : [service@wieson.com](mailto:service@wieson.com)

Website : [www.wieson.com](http://www.wieson.com)

#### **Wieson Automotive (Taiwan) Co., LTD.**

聯盛車用電子股份有限公司

Address : 15F, No.237, Sec.1, Datong Rd., Xizhi Dist., New Taipei City 221006, Taiwan

221006 台灣新北市汐止區大同路一段237號15樓

Phone : 886-2-2647-3055

Fax : 886-2-2647-5703

E-mail : [sales\\_auto@wieson.com](mailto:sales_auto@wieson.com)

Website : [www.wieson-auto.com](http://www.wieson-auto.com)

### China 中國

#### **Wieson Technologies (Dong Guan) Co., LTD.**

東莞聯國電子有限公司

Address : HuanGang Ind. Area, Houjie Town, Dong Guan City, GuangDong Province 523946, China

523946 中國東莞市厚街鎮環崗工業區新保威工業城

Phone : 86-769-8559-7201

86-769-3885-8188

Fax : 86-769-8599-2715

E-mail : [service@wieson.com](mailto:service@wieson.com)

#### **Wieson Automotive Co., LTD. (Jiang Su)**

江蘇聯盛車用電子股份有限公司

Address : No.186 Ju Xiang Rd., Zhang Pu Town, Kun Shan City, Jiang Su 215321, China

215321 中國江蘇省昆山市張浦鎮俱巷路186號

Phone : 86-512-5744-6222

Fax : 86-512-5744-6333

E-mail : [sales\\_auto@wieson.com](mailto:sales_auto@wieson.com)

Website : [www.wieson-auto.com](http://www.wieson-auto.com)

### Overseas 海外地區

#### **San Jose, U.S.A**

美國, 聖荷西

#### **Wieson America. Inc.**

Address : 1949 Concourse Dr. San Jose, CA 95131 U.S.A

Phone : 1-408-240-8888

Fax : 1-408-240-8882

E-mail : [service@wieson.com](mailto:service@wieson.com)