

RoHS Compliant

FOR REFERENCE ONLY

REV	DATE	DESCRIPTION	ECN NO.	NAME
A	11.12.27	PROPOSAL		Wzbin

B TO B CONN., PITCH: 0.5mm, H: 1.0mm, MALE, SMT TYPE

ORDER INFORMATION

G2850-08 ** ** * * -00
 ① ② ③ ④

MATERIAL:

HOUSING: SEE ORDER INFORMATION (UL94V-0)
 HOUSING COLOR: SEE ORDER INFORMATION
 TERMINAL: PHOSPHOR BRONZE
 TERMINAL PLATING: FULL Au OVER 50u" min. Ni UNDERPLATE OVERALL
 GROUNDING PIN: BRASS
 GROUNDING PIN PLATING: Sn PLATED
 PACKING: SEE ORDER INFORMATION

① PIN NUMBER:

- 05: 2*05PIN
- 06: 2*06PIN
- ...
- 40: 2*40PIN

② HOUSING MATERIAL&COLOR:

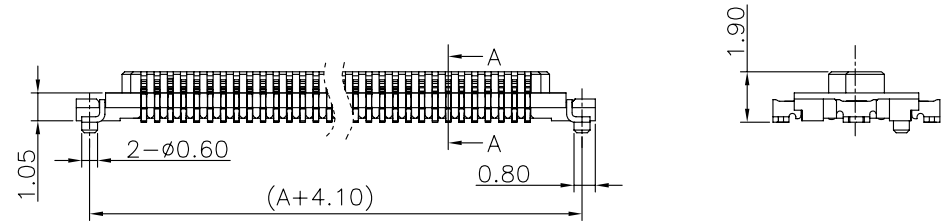
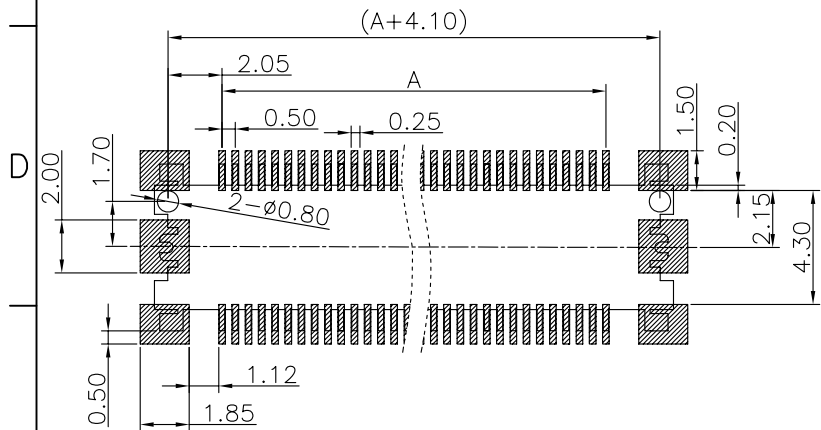
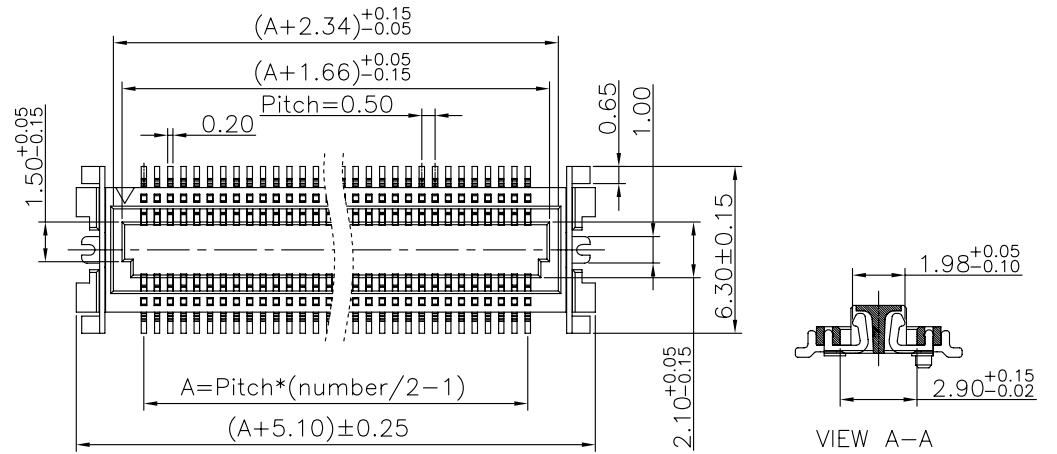
- 00: LCP, BLACK
- 01: LCP, NATURE

③ PACKING:

- 0: WITHOUT CAP/MYLAR; TAPE&REEL
- 1: TAPE&REEL+CAP
- 2: TAPE&REEL+Mylar

④ TERMINAL PLATING:

- 1: GOLD FLASH



NOTE: 1. P.C.B LAYOUT TOLERANCE: $\pm 0.05\text{mm}$
 2. SMT COPLANARITY TOLERANCE Max: 0.10mm
 3. GENERAL TOLERANCE: ± 0.20

GENERAL TOLERANCE: $\pm 0.25\text{mm}$ GENERAL ANGLE TOLERANCE: $\pm 3^\circ$	WIESON TECHNOLOGIES CO., LTD	PART NO.: G2850-08*****-00		
	DRAWN BY	Wzbin(WSC)	DRAWING NO.	G2850-08*****-00
	CHECKED BY	Wzbin	DRAWING SIZE	A4
	APPROVED BY	JinKens	UNIT	mm
	SORTING NO.	CA0015(WSC)	PAGE	1 OF 1

REFERENCE

[ARTICLE:044033 V6]

RoHS Compliant

FOR REFERENCE ONLY

REV	DATE	DESCRIPTION	ECN NO.	NAME
A	11.12.27	PROPOSAL		Wzbin

B TO B CONN., PITCH: 0.5mm, H: 0.9mm, FEMALE, SMT TYPE

ORDER INFORMATION

G4296-07 ** ** * * -00

① ② ③ ④

MATERIAL:

HOUSING: SEE ORDER INFORMATION (UL94V-0)

HOUSING COLOR: SEE ORDER INFORMATION

TERMINAL: BRASS

TERMINAL PLATING: FULL Au OVER 50u" min. Ni

UNDERPLATE OVERALL

GROUNDING PIN: BRASS

GROUNDING PIN PLATING: Sn PLATED

PACKING: SEE ORDER INFORMATION

① PIN NUMBER:

05: 2*05PIN

06: 2*06PIN

...

40: 2*40PIN

② HOUSING MATERIAL&COLOR:

00: LCP, BLACK

01: LCP, NATURE

02: PA46, BLACK

03: PA46, NATURE

③ PACKING:

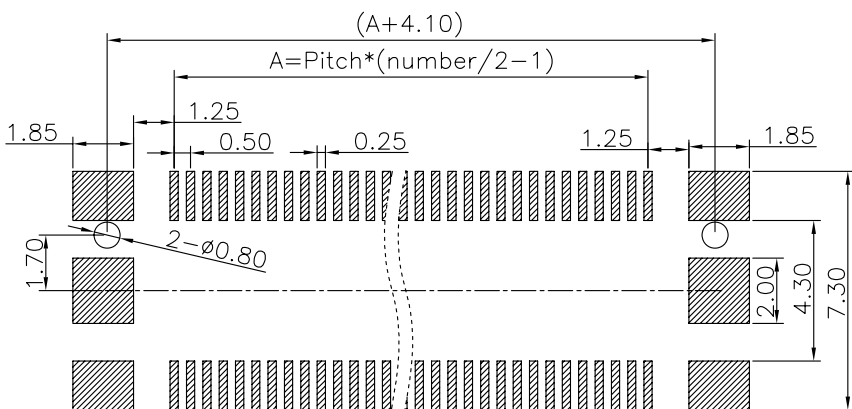
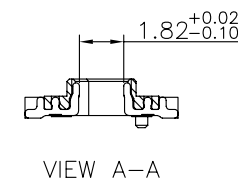
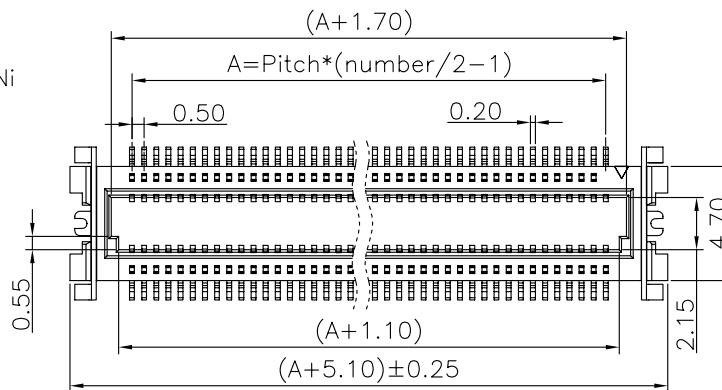
0: WITHOUT CAP/MYLAR;
TAPE&REEL

1: TAPE&REEL+CAP

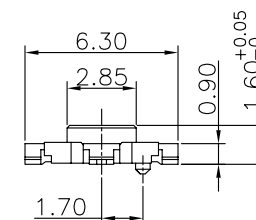
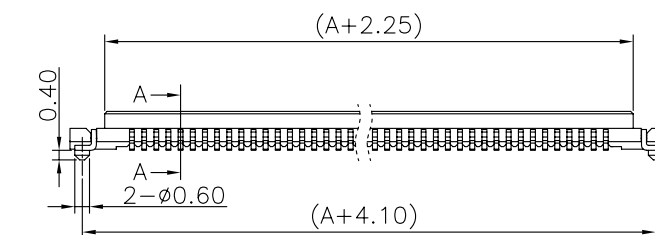
2: TAPE&REEL+Mylar

④ TERMINAL PLATING:

1: GOLD FLASH



RECOMMENDED P.C.BOARD



NOTE: 1. P.C.B LAYOUT TOLERANCE: ±0.05mm
2. SMT COPLANARITY TOLERANCE Max: 0.10mm
3. GENERAL TOLERANCE: ±0.20

GENERAL TOLERANCE ±0.25mm GENERAL ANGLE TOLERANCE ±3°	WIESON TECHNOLOGIES CO., LTD	PART NO.: G4296-07*****-00	
	DRAWN BY	Wzbin(WSC)	DRAWING NO. G4296-07*****-00
	CHECKED BY	Wzbin	DRAWING SIZE A4
	APPROVED BY	JinKens	UNIT mm
	SORTING NO. CA0015(WSC)	PAGE	1 OF 1

REFERENCE

[ARTICLE:044033 V6]