

RoHS Compliant

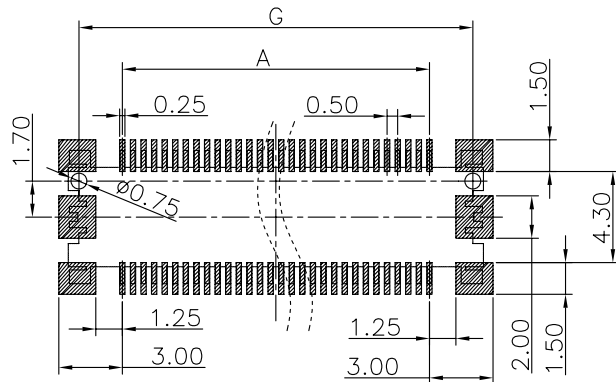
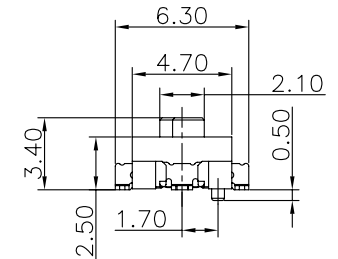
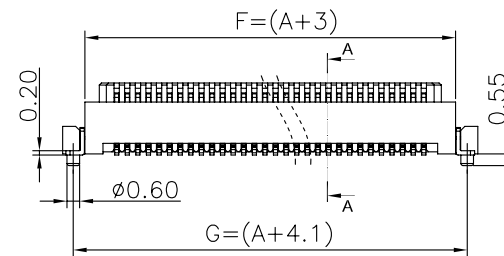
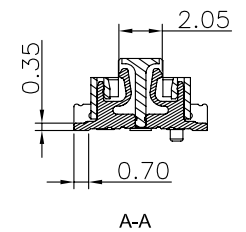
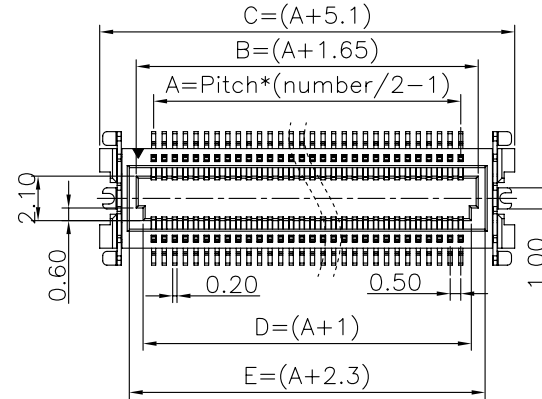
B TO B CONN., PITCH: 0.5mm, H: 2.5mm, MALE, SMT TYPE

REV	DATE	DESCRIPTION	ECN NO.	NAME
A	13.04.23	PROPOSAL		Wzbin

ORDER INFORMATION
G2850-58 ** ** * * -00
① ② ③ ④

MATERIAL:
HOUSING: SEE ORDER INFORMATION (UL94V-0)
HOUSING COLOR: SEE ORDER INFORMATION
TERMINAL: PHOSPHOR BRONZE
TERMINAL PLATING: FULL Au OVER 50u" min. Ni UNDERPLATE OVERALL
GROUNDING PIN: BRASS
GROUNDING PIN PLATING: Sn PLATED
PACKING: SEE ORDER INFORMATION

- ① PIN NUMBER:
05: 2*05PIN
06: 2*06PIN
...
30: 2*30PIN
- ② HOUSING MATERIAL&COLOR:
00: LCP, BLACK
01: LCP, NATURE
- ③ PACKING:
0: WITHOUT CAP/MYLAR;
TAPE&REEL
1: TAPE&REEL+CAP
2: TAPE&REEL+Mylar
- ④ TERMINAL PLATING:
1: GOLD FLASH



RECOMMENDED P.C.BOARD

- NOTE: 1. P.C.B LAYOUT TOLERANCE: $\pm 0.05\text{mm}$
 2. SMT COPLANARITY TOLERANCE Max: 0.10mm
 3. GENERAL TOLERANCE: ± 0.20

GENERAL TOLERANCE $\pm 0.25\text{mm}$ GENERAL ANGLE TOLERANCE $\pm 3^\circ$	WIESON TECHNOLOGIES CO., LTD	PART NO.: G2850-58*****-00	
	DRAWN BY	Wzbin(WSC)	DRAWING NO. G2850-58*****-00
	CHECKED BY	Wzbin	DRAWING SIZE A4
	APPROVED BY	Jinkens	UNIT mm
	SORTING NO. CA0015(WSC)	PAGE	1 OF 1

RoHS Compliant

FOR REFERENCE ONLY

REV	DATE	DESCRIPTION	ECN NO.	NAME
A	11.12.22	PROPOSAL		Wzbin

B TO B CONN., PITCH: 0.5mm, H: 1.5mm, FEMALE, SMT TYPE

ORDER INFORMATION
G4296-06 ** ** * * -00
① ② ③ ④

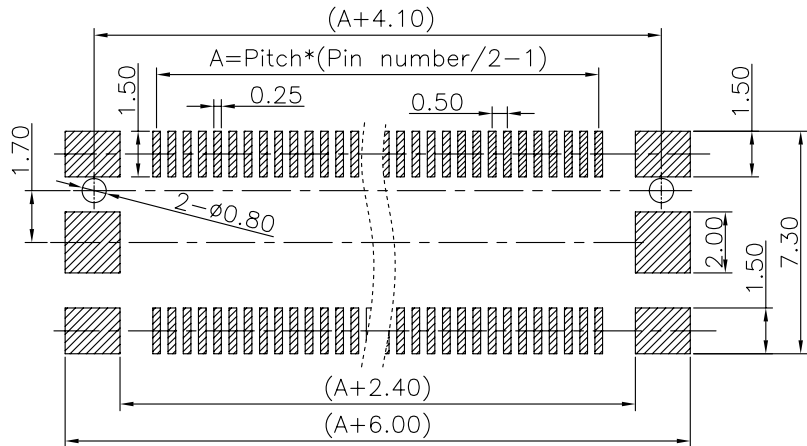
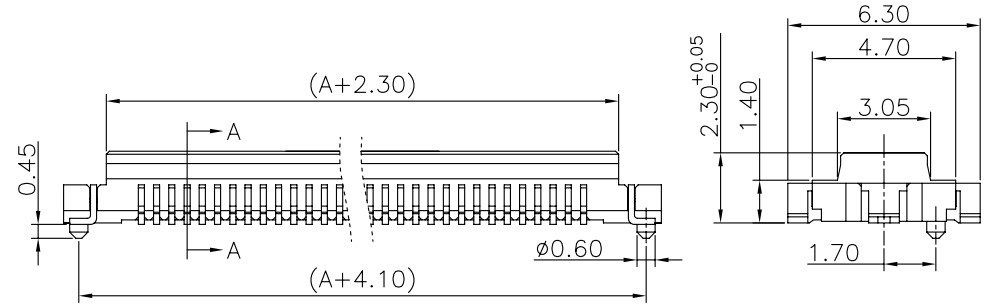
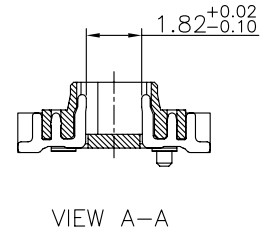
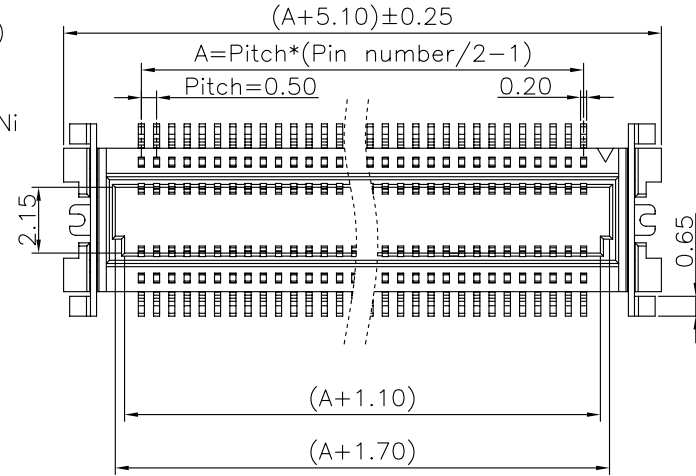
- ① PIN NUMBER:
05: 2*05PIN
06: 2*06PIN
:
40: 2*40PIN

- ② HOUSING MATERIAL&COLOR:
00: LCP, BLACK
01: LCP, NATURE

- ③ PACKING:
0: WITHOUT CAP/MYLAR;
TAPE&REEL
1: TAPE&REEL+CAP
2: TAPE&REEL+Mylar

- ④ TERMINAL PLATING:
1: GOLD FLASH

MATERIAL:
HOUSING: SEE ORDER INFORMATION (UL94V-0)
HOUSING COLOR: SEE ORDER INFORMATION
TERMINAL: BRASS
TERMINAL PLATING: FULL Au OVER 50u" min. Ni UNDERPLATE OVERALL
GROUNDING PIN: BRASS
GROUNDING PIN PLATING: Sn PLATED
PACKING: SEE ORDER INFORMATION



RECOMMENDED P.C.BOARD

NOTE: 1. P.C.B LAYOUT TOLERANCE: ±0.05mm
2. SMT COPLANARITY TOLERANCE Max: 0.10mm
3. GENERAL TOLERANCE: ±0.20

GENERAL TOLERANCE ± 0.25mm GENERAL ANGLE TOLERANCE ± 3°	WIESON TECHNOLOGIES CO., LTD	PART NO.: G4296-06*****-00		
	DRAWN BY	Wzbin(WSC)	DRAWING NO.	G4296-06*****-00
	CHECKED BY	Wzbin	DRAWING SIZE	A4
	APPROVED BY	JinKens	UNIT	mm
	SORTING NO.	CA0015(WSC)	PAGE	1 OF 1

REFERENCE

[ARTICLE:044033 V6]