

RoHS Compliant

PHITCH=0.80mm B TO B H=1.55 MALE CONN.,

REV	DATE	DESCRIPTION	ECN NO.	NAME
A	14.02.28	PROPOSAL		LRP

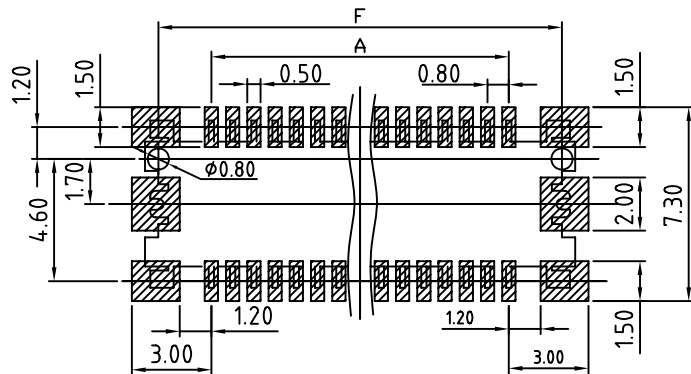
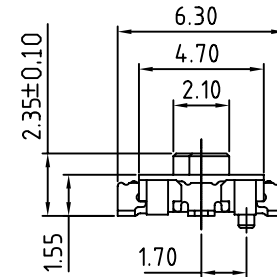
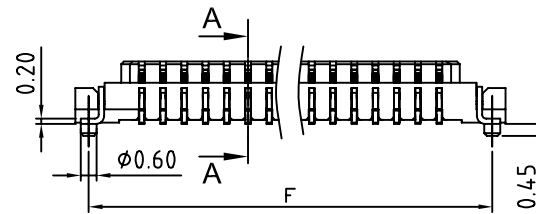
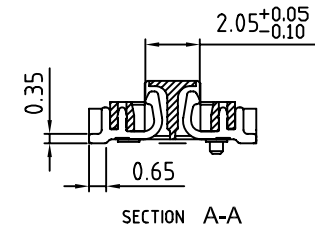
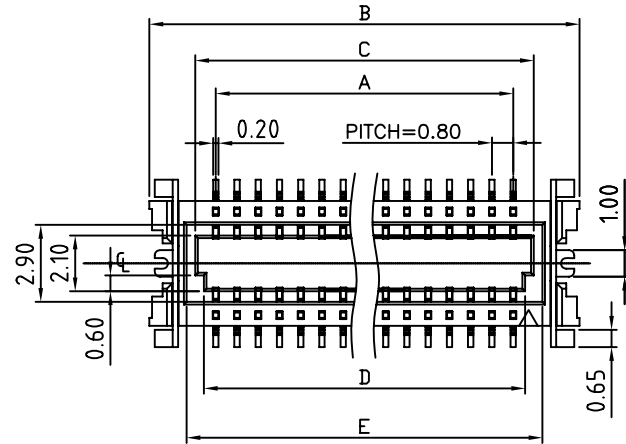
MATERIAL:
 HOUSING: SEE ORDER INFORMATION (UL94V-0)
 HOUSING COLOR: SEE ORDER INFORMATION
 TERMINAL: BRASS
 TERMINAL PLATING: SELECTIVE Au OVER 30u" min Ni
 UNDER PLATED OVERALL
 GROUNDING PIN: BRASS
 GROUNDING PIN PLATING: Sn PLATED
 PACKING: REEL

ORDER INFORMATION
 G2852-04 ** ** *-00

PIN NUMBER
 10: 2*10P
 15: 2*15P
 20: 2*20P

TERMINAL PLATING
 01: GOLD FLASH
 02: Sn

HOUSING MATERIAL&COLOR
 00: LCP; NATURAL
 01: LCP; BLACK



RECOMMENDED P.C. BOARD

NOTE: 1. P.C.B LAYOUT TOLERANCE: ±0.05mm
 2. SMT COPLANRITY TOLERANCE MAX: 0.10mm

DIM
 A=0.8*(CONTACTS/2-1)
 B=A+5.0
 C=A+1.55
 D=A+0.9
 E=A+2.2
 F=A+4.0

GENERAL TOLERANCE ± 0.25mm GENERAL ANGLE TOLERANCE ± 3°	WIESON TECHNOLOGIES CO., LTD		PART NO.: G2852-04*****-00	
	DRAWN BY	LRP(WSC)	DRAWING NO.	G2852-04*****-00
	CHECKED BY	JINKENS	DRAWING SIZE	A4
	APPROVED BY	JINKENS	UNIT	mm
	SORTING NO.	CA0205(WSC)	PAGE	1 OF 1

PROPOSAL

[ARTICLE:044033 V6]

RoHS Compliant

PHITCH=0.80mm B TO B H=1.40 FEMALE CONN.,.

REV	DATE	DESCRIPTION	ECN NO.	NAME
A	14.02.28	PROPOSAL		LRP

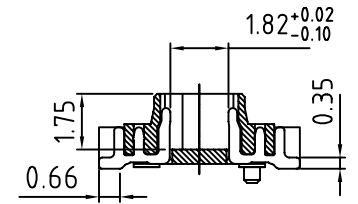
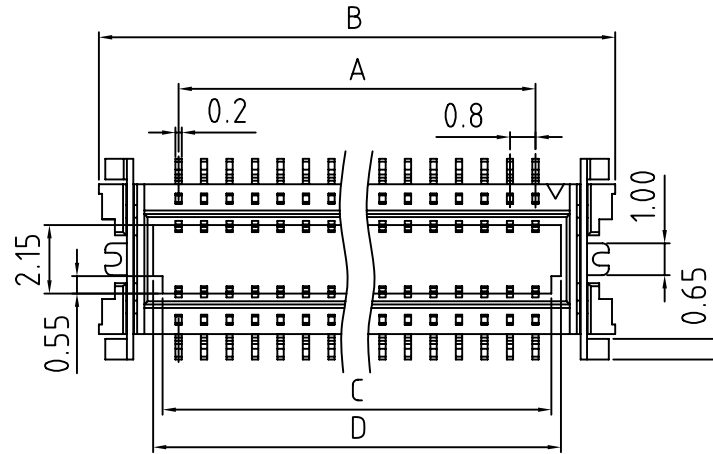
MATERIAL:
 HOUSING: SEE ORDER INFORMATION (UL94V-0)
 HOUSING COLOR: SEE ORDER INFORMATION
 TERMINAL: BRASS
 TERMINAL PLATING: SELECTIVE Au OVER 30u" min Ni UNDER PLATED OVERALL
 GROUNDING PIN: BRASS
 GROUNDING PIN PLATING: Sn PLATED
 PACKING: REEL

ORDER INFORMATION
 G4297-04 ** ** *-00

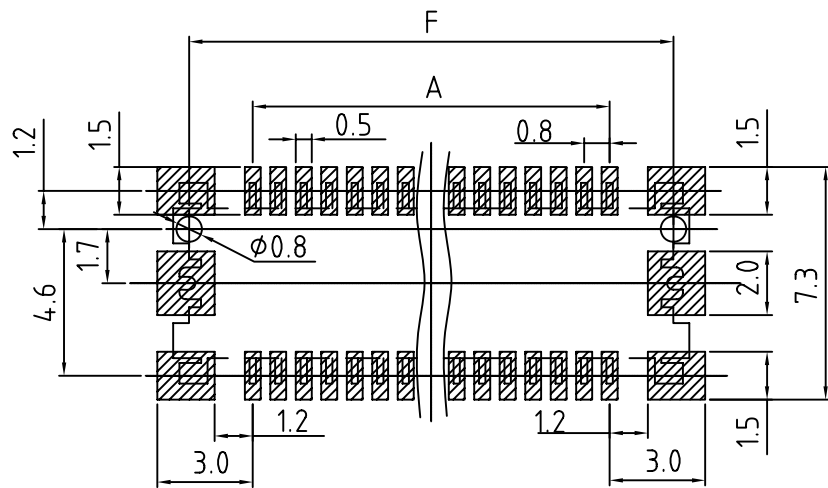
PIN NUMBER
 10: 2*10P
 15: 2*15P
 20: 2*20P

TERMINAL PLATING
 01: GOLD FLASH
 02: Sn

HOUSING MATERIAL&COLOR
 00: LCP; NATURAL
 01: LCP; BLACK



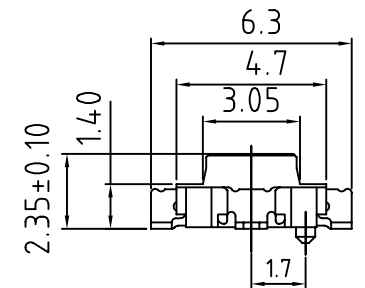
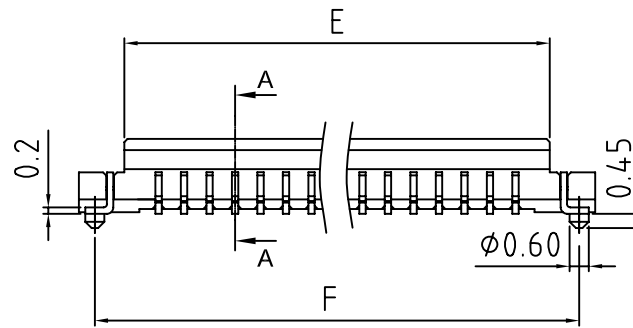
SECTION A-A



RECOMMENDED P.C. BOARD

NOTE: 1. P.C.B LAYOUT TOLERANCE: ±0.05mm
 2. SMT COPLANRITY TOLERANCE MAX: 0.10mm

DIM
 A=0.5*(CONTACTS/2-1)
 B=A+5.5
 C=A+1.0
 D=A+1.6
 E=A+2.15
 F=A+4.0



GENERAL TOLERANCE ± 0.25mm GENERAL ANGLE TOLERANCE ± 3°	WIESON TECHNOLOGIES CO., LTD WIESON		PART NO.: G4297-04*****-00	
	DRAWN BY	LRP(WSC)	DRAWING NO.	G4297-04*****-00
	CHECKED BY	JINKENS	DRAWING SIZE	A4
	APPROVED BY	JINKENS	UNIT	mm
	SORTING NO.	CA0205(WSC)	PAGE	1 OF 1

PROPOSAL

[ARTICLE:044033 V6]