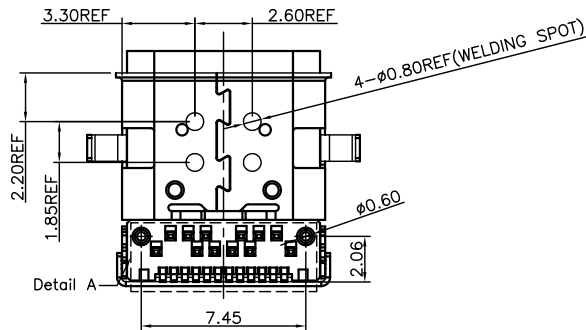
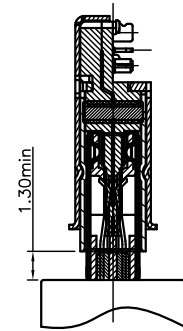
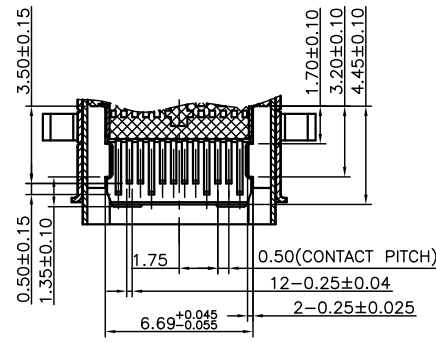
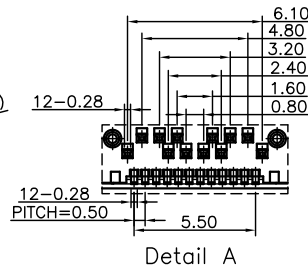
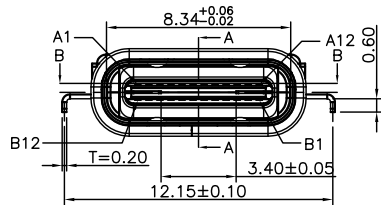
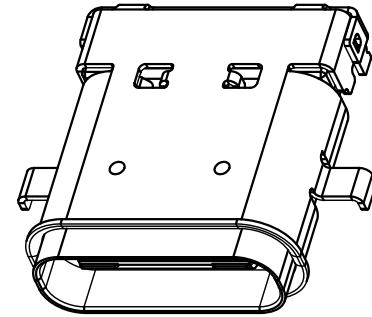
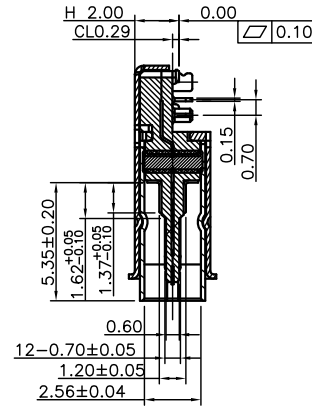
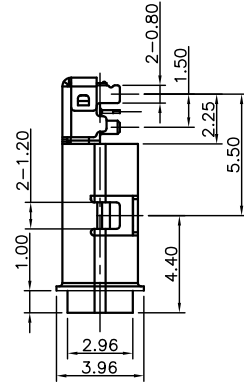
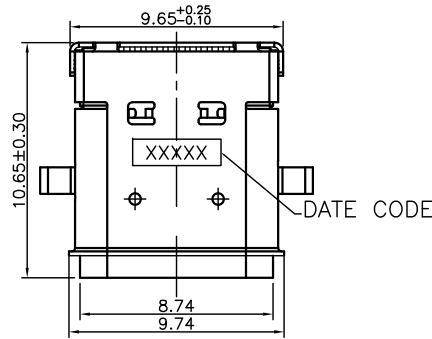


USB 3.1 CF WATERPROOF CL0.29 H2.00mm DIP TYPE

REV	DATE	DESCRIPTION	ECN NO.	NAME
A	18.03.19	PROPOSAL		JIABIN



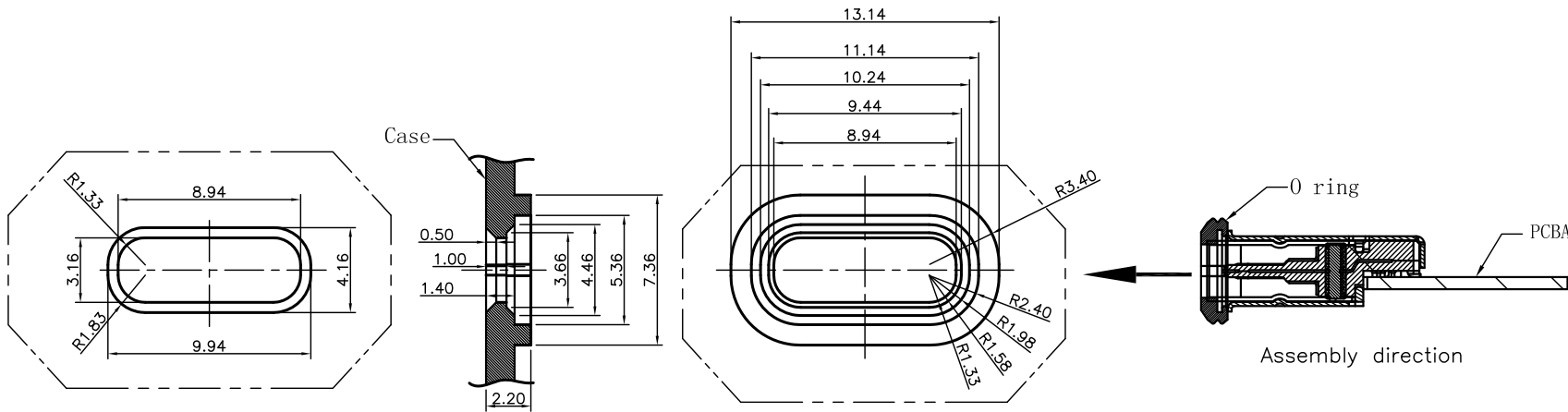
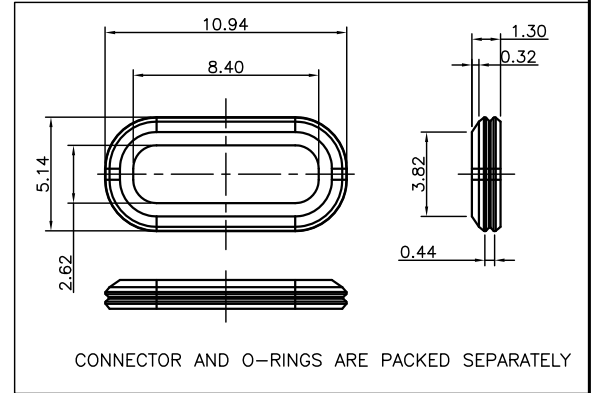
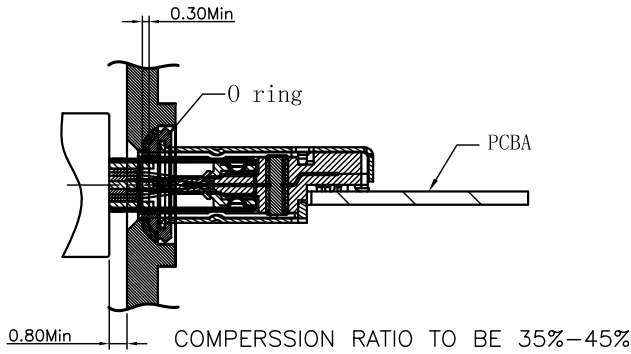
GENERAL TOLERANCE		WIESON TECHNOLOGIES CO., LTD		PART NO.: G3402-12000XX-XX	
X.X	=±0.20	DRAWN BY	JIABIN	DRAWING NO.	G3402-12000XX-XX
X.XX	=±0.15	CHECKED BY	YXJ	DRAWING SIZE	1 : 1 A4
X.X*	=±3'	APPROVED BY	JIM	UNIT	mm
		SORTING NO.	WSC	PAGE	1 OF 3

ISSUED

[ARTICLE:044033 V6]

USB 3.1 CF WATERPROOF CL0.29 H2.00mm DIP TYPE

REV	DATE	DESCRIPTION	ECN NO.	NAME
A	18.03.19	PROPOSAL		JIABIN



RECOMMENDED OPEN DIMENSION OF CASE  
TOLERANCE:  $\pm 0.03\text{mm}$   
MATTING AREA WITH SEALING RING

GENERAL TOLERANCE		WIESON TECHNOLOGIES CO., LTD WIESON	PART NO.: G3402-120000XX-XX		
X.X	$=\pm 0.20$		DRAWN BY	JIABIN	DRAWING NO.
X.XX	$=\pm 0.15$	CHECKED BY	YXJ	DRAWING SIZE	1 : 1 A4
X.X*	$=\pm 3^\circ$	APPROVED BY	JIM	UNIT	mm
		SORTING NO.	WSC	PAGE	2 OF 3

ISSUED

[ARTICLE:044033 V6]

USB 3.1 CF WATERPROOF CL0.29 H2.00mm DIP TYPE

REV	DATE	DESCRIPTION	ECN NO.	NAME
A	18.03.19	PROPOSAL		JIABIN

NOTE:

1.MATERIAL:

INSULATOR: HIGH TEMPERATURE PLASTIC UL 94V-0;  
 TERMINAL: C2680-EH(T=0.15mm)  
 SHELL:STAINLESS STEEL(T=0.20mm)

2.PLATING

TERMINAL CONTACT: (SEE ORDER INFORMATION) GOLD PLATING. ALL OVER  
 50u" Min NICKEL AND 80u"Min Tin ALL OVER 50u" Min NICKEL ON SOLDER AREA  
 OUT SHELL: 50u" Min. NICKEL ALL OVER  
 INNER SHELL: DEGREASE

3.ORDER INFORMATION : G3402-120000 XX-XX

① ②

- ① { 01: G/F ON CONTACT AREA
- 02: 5u" Au ON CONTACT AREA
- 03: 10u" Au ON CONTACT AREA
- 04: 15u" Au ON CONTACT AREA
- 05: 30u" Au ON CONTACT AREA

- ② { 00: WIESON
- H0: HOLGEN FREE

4.ELECTRICAL CHARACTERISTICS;

CONTACT RESISTANCE: 40mΩ Max FOR INITIAL. 10mΩ CHANGE AFTER TEST. MEASURE AT 20mV, 100mA.  
 CONTACT CURRENT RATING: 5A FOR VBUS PIN; 1.25A FOR VCONN PIN.  
 DIELECTRIC WITHSTANDING VOLTAGE: 100V AC R.M.S.  
 INSULATION RESISTANCE 100MΩ Min  
 OPERATING TEMPERATURE: -40°C ~ 85°C

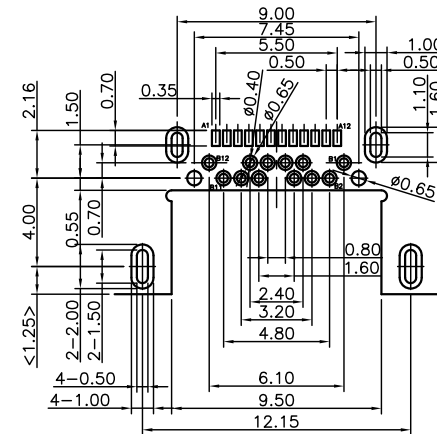
5.MECHANICAL CHARACTERISTICS:

MATING FORCE: 5~20 N.  
 UNMATED FORCE: 6~20N AFTER TEST  
 DURABILITY: 10,000 CYCLES

6.WATERPROOF GRADE:IPX7

7.PACKING:TAPE & REEL

Pin	Signal Name	Mating Sequence	Pin	Signal Name	Mating Sequence
A1	GND	First	B12	GND	First
A2	SSTXp1	Second	B11	SSRXp1	Second
A3	SSTXn1	Second	B10	SSRXn1	Second
A4	VBUS	First	B9	VBUS	First
A5	CC1	Second	B8	SBU2	Second
A6	Dp1	Second	B7	Dn2	Second
A7	Dn1	Second	B6	Dp2	Second
A8	SBU1	Second	B5	CC2	Second
A9	VBUS	First	B4	VBUS	First
A10	SSRXn2	Second	B3	SSTXn2	Second
A11	SSRXp2	Second	B2	SSTXp2	Second
A12	GND	First	B1	GND	First
SHELL	GND		SHELL	GND	



RECOMMENDED PCB LAYOUT

TOLERANCE: ±0.05mm

SCALE 1 : 1

GENERAL TOLERANCE	WIESON TECHNOLOGIES CO., LTD	PART NO.: G3402-120000XX-XX	
X.X = ±0.20	DRAWN BY: JIABIN	DRAWING NO.	G3402-120000XX-XX
X.XX = ±0.15	CHECKED BY: YXJ	DRAWING SIZE	1 : 1   A4
X.X* = ±3'	APPROVED BY: JIM	UNIT	mm
	SORTING NO.: WSC	PAGE	3 OF 3

ISSUED

[ARTICLE:044033 V6]