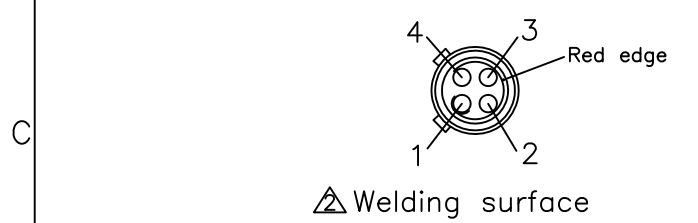
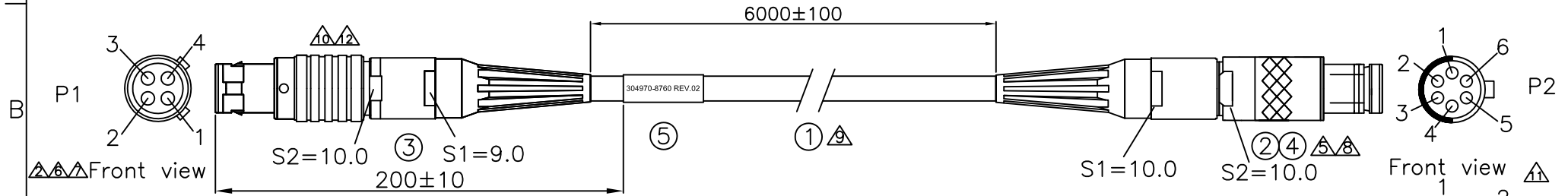


Customer Drawing

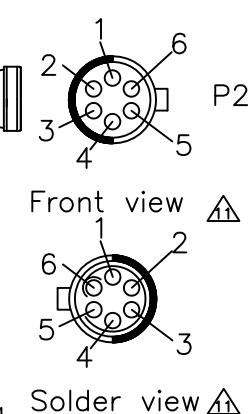
RoHS Compliant

REV	DATE	DESCRIPTION	ECN NO.	NAME
A7	18.08.10	CHANGE P1 CONN.		XBIN
A8	18.08.20	RETURN REV.A6		XBIN
A9	18.08.29	CHANGE P2 APPEARANCE		XBIN
A10	18.09.13	CHANGE CABLE		XBIN
A11	18.10.24	CHANGE P1 APPEARANCE		XBIN
A12	19.07.25	CHANGE P2 PIN		MORGAN
A13	19.08.15	RETURN REV.A0 APPEARANCE CHANGE DESCRIPTION		MORGAN
A1	17.03.06	PROPOSAL		JUN
A2	17.03.14	ADD DESIGN SPEC		JUN
A3	17.12.14	CHANGE FRONT VIEW ADD WEIDING SURFACE CORRECTION P2 OUTLOOK		JUN
A4	18.04.24	CHANGE P2 CONNECTOR ADD P2 MOLDING		JUN
A5	18.05.17	CHANGE LABEL REV.		XBIN
A6	18.07.26	CHANGE P2 CONN.		XBIN

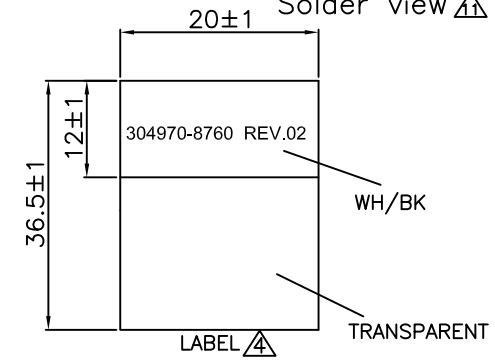


PIN ASSIGNMENT

P1		P2
1	WHITE	1
2	BROWN	2
3	RED	3
4	BLUE	4
	GREY	5
		6



NOTES:
1. OPEN & SHORT 100% TEST.



CUST NO.:
304970-8760-000/001
PART NO.:
G9600JD211A-006

WIESON TECHNOLOGIES CO., LTD
WIESON

NO.	ITEM	DESCRIPTION	QTY	SORTING NO.	WCS	PAGE	1 OF 1
⑤	LABEL	LABEL:W=20mm COLOR:WHITE/TRANSPARENT	1	TITLE:		DRAWING NO.	G9600JD211A-006
④	PLUG	6P STRAIGHT PLUG,MATERIAL:COPPER ALLOY,SURFACE CHROME PLATED (WITH THE SHEATH)	1	4P PLUG TO 6P PLUG CABLE L=6000mm		DRAWING SIZE	A4
③	PLUG	4P STRAIGHT PLUG,MATERIAL:COPPER ALLOY,SURFACE CHROME PLATED (WITH THE SHEATH)	1	DRAWN BY	JUN(WSC)	UNIT	mm
②	WIRE	UL1007 24AWG PVC JACKET,COLOR:GRAY	1	CHECKED BY	TON	PAGE	1 OF 1
①	WIRE	24AWG*4C(14/0.135±0.008),BLACK PUR JACKET(COMPLY WITH Tmpu acc.STANDARD),OD=4.7±0.20mm	1	APPROVED BY	TOLIN		