

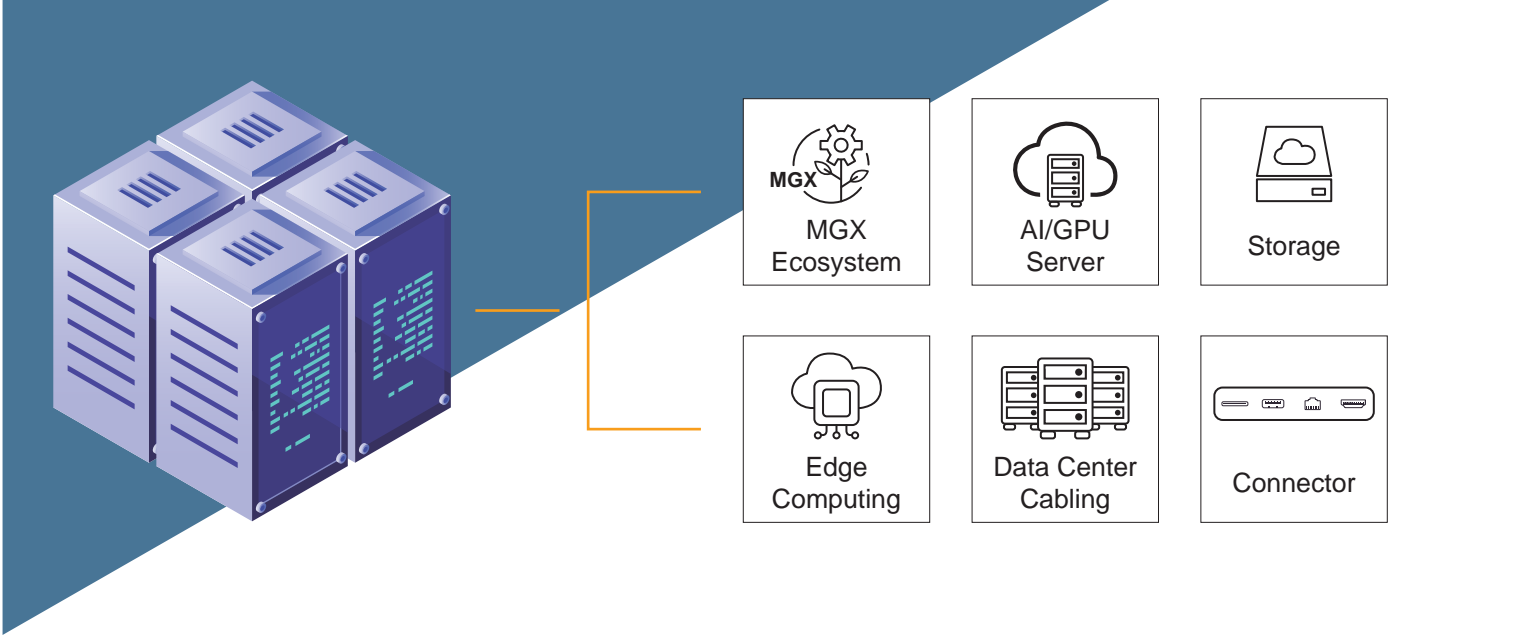


Wieson Data Center Solutions



High-Speed Interconnect Solutions for AI and Cloud Infrastructure

Wieson Technology, we specialize in providing a complete portfolio of interconnect solutions for AI servers and MGX ecosystems, leveraging our deep expertise in high-frequency and high-speed transmission. Our advanced cable and connector designs are engineered to ensure seamless data flow both within and between servers, effectively supporting the rapidly increasing demands of AI, cloud computing, and HPC infrastructure.



Server Internal Connectors



MCIO Gen6 Connector

- Compliance to SFF-TA-1016
- 0.60mm pitch, vertical configurations
- Multiple channels are optional: X4, X8, X16
- Up to 64Gb/s PAM4, PCIe® Gen 6, over 1.0 meter transmission distance
- 85Ω impedance and various pin number options



Multi-Trak Connector

- Compliance to SFF-TA-1033
- 0.60mm pitch, vertical configurations
- Combine original PCIe® and MCIO to be one connector, include POWER(21A) and high/low speed signal
- Up to 56Gb/s PAM4, PCIe® Gen 5, over 1.0 meter transmission distance
- Optional for 85Ω impedance and various pin number options



DA-CEM Connector

- 1.0mm pitch
- Support X16 standard links as per PCI-SIG CEM specification
- Outperform Gen 5 specification, but also backward mating compatible to Gen 1/2/3/4 specification



Gen Z Connector

- Compliance to SFF-TA-1002.
- High density, hot pluggable, high performance
- Rated up to 56G PAM-4 (112G)
- For PCIe Gen3/4, SAS-3/4, Ethernet protocols 25G per lane, Infiniband 28G
- Sizing options include 1C, 2C, and 4C/4C+ in Vertical sizes, and 4C+ in Straddle mount.
- Click on each standard below for more information on how one connector family can be used for many server, storage, network, and other data communication connectivity needs



Oculink Connector

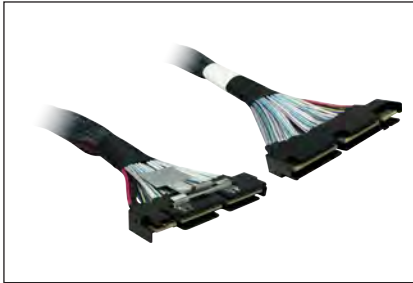
- Compliance to SFF-8612.
- Configurations: X4 / X8
- Vertical / Right Angle
- Plating: 15u" & 30u"
- Standards & High-Speed Support: SAS 4.0 (24Gb/s), PCIe 4.0 (16GT/s)
- Data Rates: up to 24Gbps (12Gbps for Right Angle)
- Pitch: 0.5 mm
- Mounting Style: SMT

Server Internal Cables



MCIO Gen6 Cable

- Compliance to SFF-TA-1016.
- 0.6mm pitch, Straight, right angle, side exit and customization cable plug are optional
- Multiple channels are optional: 4X, 8X, 16X
- Up to 64Gb/s PAM4, PCIe® Gen 6, over 1.0 meter transmission distance
- Supports 85Ω impedance applications
- 30-34AWG are available for both discrete and ribbon cable



Multi-Trak Cable

- Compliance to SFF-TA-1033.
- 0.6mm contact pitch surface mount technology (SMT) combination connector
- Supports 85Ω impedance applications
- PCIe Gen5 performance with a path to PCIe Gen6
- Combine original PCIe® and MCIO to be one connector, include POWER(21A) and high/low speed signal
- Upgrade to Gen6 version and apply to PCI SIG to be a standard connector



DA-CEM Cable

- 1.0mm pitch
- Support X16 standard links as per PCI-SIG CEM specification
- Connect MCIO, Multi-Trak, GENZ or SlimSAS.
- Supports signaling rates up to PCIe GEN 5.
- Supports 85Ω impedance application.
- Supports 75W power and reduction voltage 12V to 3.3V



GenZ Cable

- Compliance to SFF-TA-1020.
- Pitch 0.6mm, 1.57mm PCB thickness.
- Supports signaling rates up to PCIe GEN 5.
- Supports 85Ω impedance applications
- Pull-tab is optional.



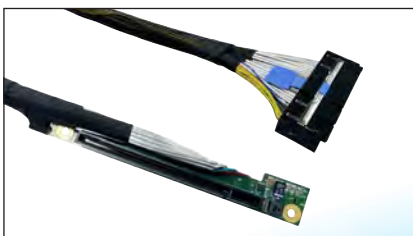
Oculink Cable

- Compliance to SFF-8611.
- Multiple channels are optional: 4X, 8X
- Excellent SI performance: signal rates up to PCIe4 16GT/s and SAS 4.0 24Gbps
- Supports 85Ω and 100Ω impedance applications
- 30-34AWG are available for both discrete and ribbon cable



SlimSAS cable

- Compliance to SFF-8654.
- 0.6mm Pitch, Straight, Right angle, side exit and customization cable plug are optional
- Supports signaling rates up to PCIe GEN 4 and SAS 3.0 (12G/bps).
- Supports 85 Ohm and 100 Ohm impedance application.
- Supports active latch.



Riser Cable

- Compliance to PCI Express Card Electromechanical Specification.
- Connect MCIO, Multi-Trak, GENZ or SlimSAS.
- Supports signaling rates up to PCIe GEN 5 (32GT/s).
- Supports 85 Ohm impedance application.
- Supports 75W power and reduction voltage 12V to 3.3V

Server External Cables



SFP Cable Assemblies

- The SFP interface supports a variety of communications standards including Fibre Channel, 10G/25G/50G/100G Ethernet
- Supports cable length from 0.25 meter to 15 meter



QSFP Cable Assemblies

- Supports per port design from 40G, 100G, 200G PAM4
- SFF-8665 industry standard compliance
- 200G Passive copper length to 2 meters and Active copper length to 4 meters



QSFP DD Cable Assemblies

- Supports per port design from 200G, 400G PAM4
- Exceeds 25G NRZ and 50G, 56G PAM4 performance and SI parameter in standard specification
- 25AWG - 32AWG cable sizes



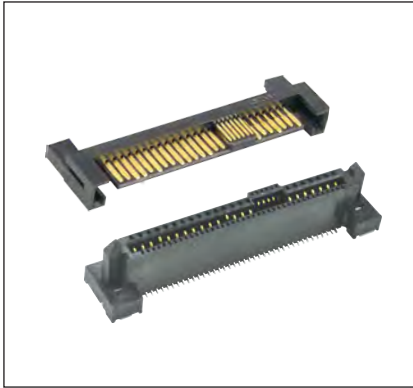
OSFP Cable Assemblies

- Supports per port design from 200G, 400G, 800G, 1.6T PAM4
- Exceeds 25G NRZ and 50G, 112G PAM4 performance and SI parameter in standard specification
- 25AWG - 32AWG cable sizes



CDFP Cable Assemblies

- Delivering 32GT/s per lane (Gen 5.0).
- CDFP has 16 lanes, capable to deliver 64Gbps
- This interconnect system is fully compliant with existing industry standard specifications SFF-TA-1032



U.2 & U.3 Connectors

- Compliance to SFF-8639.
Receptacles are inter-mateable with unshielded dual port SFF8680 (SAS 3.0/SAS 4.0) connectors
- SAS/PCIe® connectors enable SFF8630, SFF8680 and SFF8432 interface
- Implementation of high speed SSDs and HDDs allows compatibility between unshielded dual and multiport interfaces
- Backward compatible with 12Gb/s, 6Gb/s SAS, SATA and 3Gb/s SFF8482 connectors
- Product Options:
Gen5 Wire Solder Receptacle: U.2 / U.3
Gen5 SMT Receptacle: U.2
Gen4 Plug: U.2



PCIe SAS Connectors

- High Speed Support: SATA 3.0 (6Gb/s) & SAS 3.0 (12Gb/s)
- Low-profiled & Slim design, Hi-Rise design
- Multiple channels are optional: 4X, 8X, 16X
- Vertical, R/A, Mid mount type
- SMT/ DIP/ Press fit/ Saddle mount type
- Automatic assembly line
- Capacity: 3000K/M



Mini SAS HD Connectors

- Compliance to SFF-TA-8613.
- High Speed Support: SATA 3.0 (6Gb/s) & SAS 3.0 (12Gb/s)
- Low-profiled & Slim design, Hi-Rise design
- Female, Male type
- Vertical, R/A, Mid mount type
- SMT/ DIP/ Press fit type
- Automatic assembly line
- Capacity: 3000K/M



Mini SAS HD Cable

- Compliance to SFF-TA-8643
- Pitch 0.6mm, 1.0mm PCB thickness.
- Supports signaling rates up to PCIe GEN 4 and SAS3.0.
- Supports 85Ω and 100Ω impedance application.
- Supports active latch.

RJ45 Connectors



RJ45/ RJ45 ICM

- 10/100T, 1GBT(10/100/1000BT), 2.5G, 5G, 10G
- Surge Protection
- Orientation Right Angle
- PCB Mounting Style Through Hole



RJ45 10G

- Surge Protection
- Orientation Right Angle
- PCB Mounting Style Through Hole



RJ45 + USB3.0

- Transformer(100/1000M)
- Surge Protection
- Orientation Right Angle
- PCB Mounting Style Through Hole



RJ-45 + HDMI

- W / LED, Transformer(100/1000M)
- Surge Option / PoE Option
- Orientation Right Angle
- PCB Mounting Style Through Hole



Wieson Technologies Co., LTD.

15F, No.237, Sec.1, Datong Rd., Xizhi Dist.,

New Taipei City 221006, Taiwan

Phone : 886-2-2647-1896

Fax : 886-2-2648-7388

E-mail : service@wieson.com



www.wieson.com